

NOTE: SID ENDPOINTS/STAR STARTPOINTS ARE SHOWN.
FOR DETAILED DESCRIPTION OF THE FRA TRANSITION ROUTES, SEE ENR 3.5.

ATS AIRSPACE CLASSIFICATION: REF ENR 1.4 AND ENR 2.1.
SIGNIFICANT POINTS: REF ENR 4.4.
NAVAIDS: REF ENR 4.1
LEGEND: REF GEN 2.3.

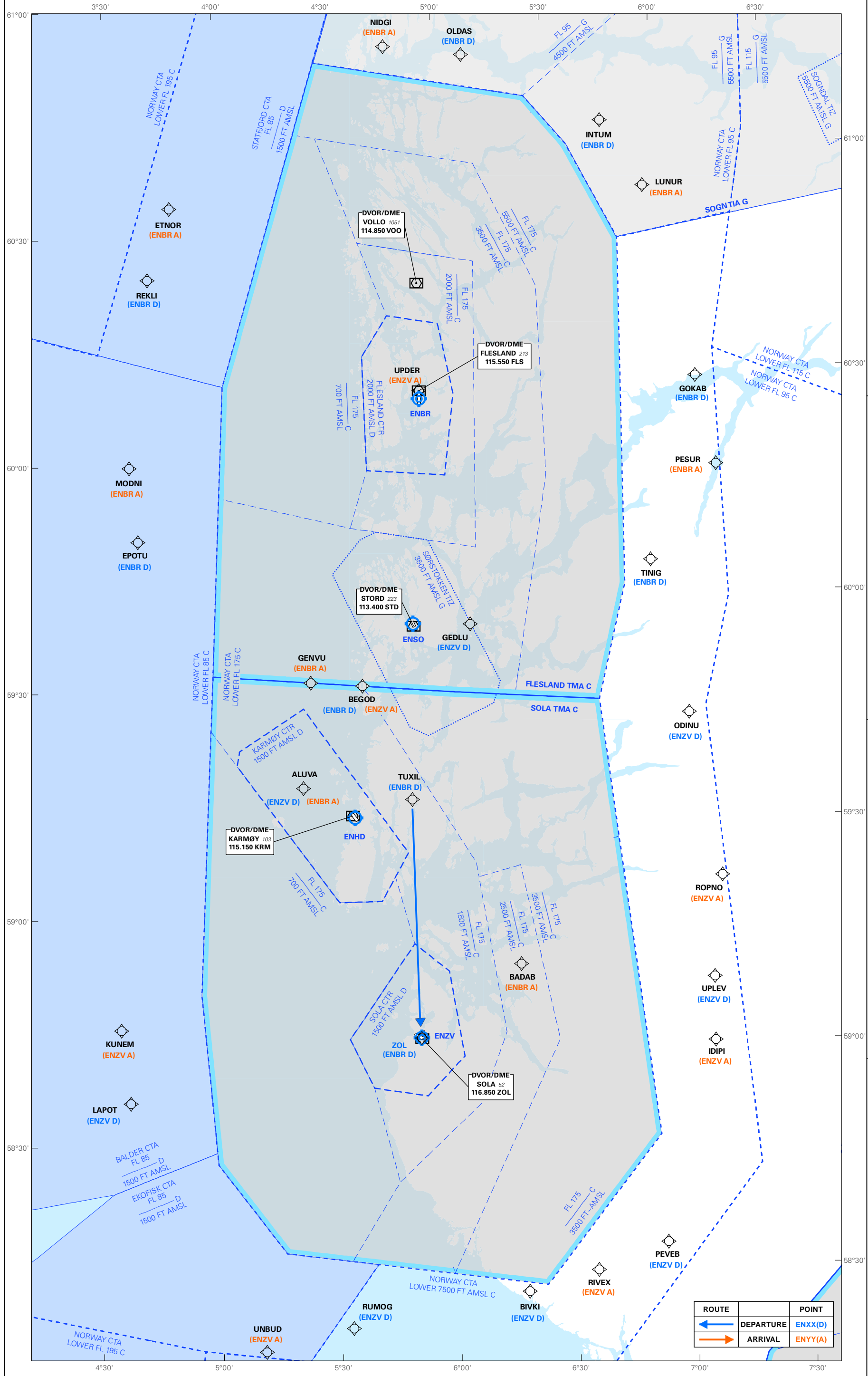
SCALE 1:900 000



FRA CONNECTING ROUTES CHART
ENBR/ENZV
NORWAY

CHANGES: RENUMBERING.

Avinor



ROUTE	POINT
	DEPARTURE ENXX(D)
	ARRIVAL ENYY(A)

26 APR 2018