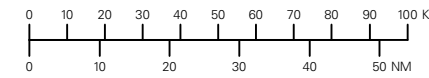


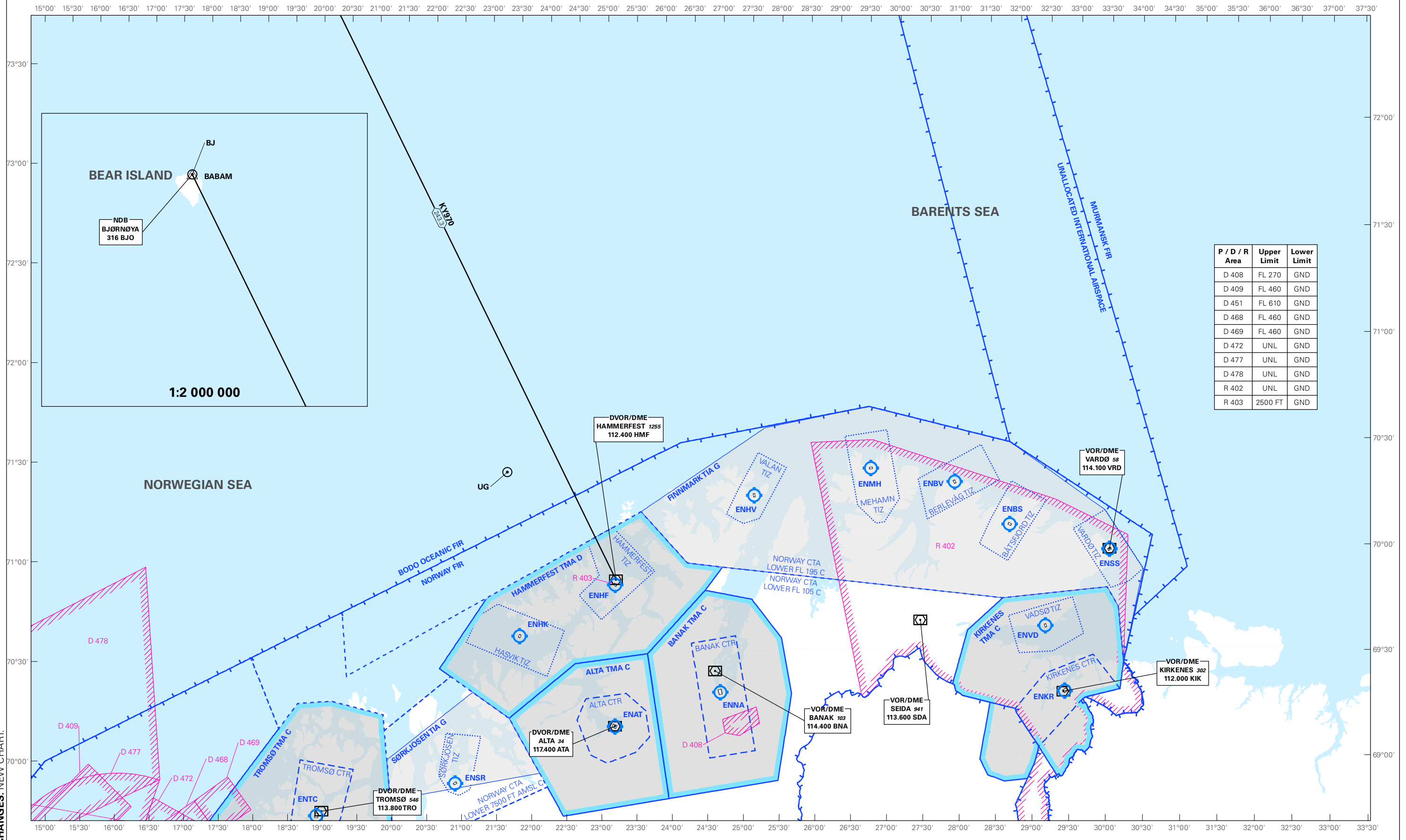
NOTE: SIGNIFICANT POINTS RELATED TO ATS-ROUTES AND HELICOPTER BACKUP POINTS (KY12/120 etc) ARE SHOWN.
SIGNIFICANT POINTS ON THE NORWEGIAN CONTINENTAL SHELF ARE SHOWN.

ATS AIRSPACE CLASSIFICATION: REF ENR 1.4 AND ENR 2.1
SIGNIFICANT POINT: REF ENR 4.4.
RADIO NAVIGATION AID: REF ENR 4.1. LEGEND: REF GEN 2.3
LOCATION INDICATOR FOR HELIPORTS AND RIGS ARE SHOWN WITHOUT COUNTRY CODE (EN)

1:2 000 000



**OFFSHORE HELICOPTER AREA
NORTHERN NORWAY
NORWAY**



P / D / R Area	Upper Limit	Lower Limit
D 408	FL 270	GND
D 409	FL 460	GND
D 451	FL 610	GND
D 468	FL 460	GND
D 469	FL 460	GND
D 472	UNL	GND
D 477	UNL	GND
D 478	UNL	GND
R 402	UNL	GND
R 403	2500 FT	GND

CHANGES: NEW CHART.