

INSTRUMENT APPROACH CHART - ICAO PLAN VIEW SCALE: 1:370 000

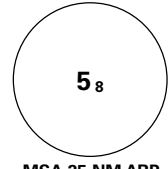
NYÅLESUND

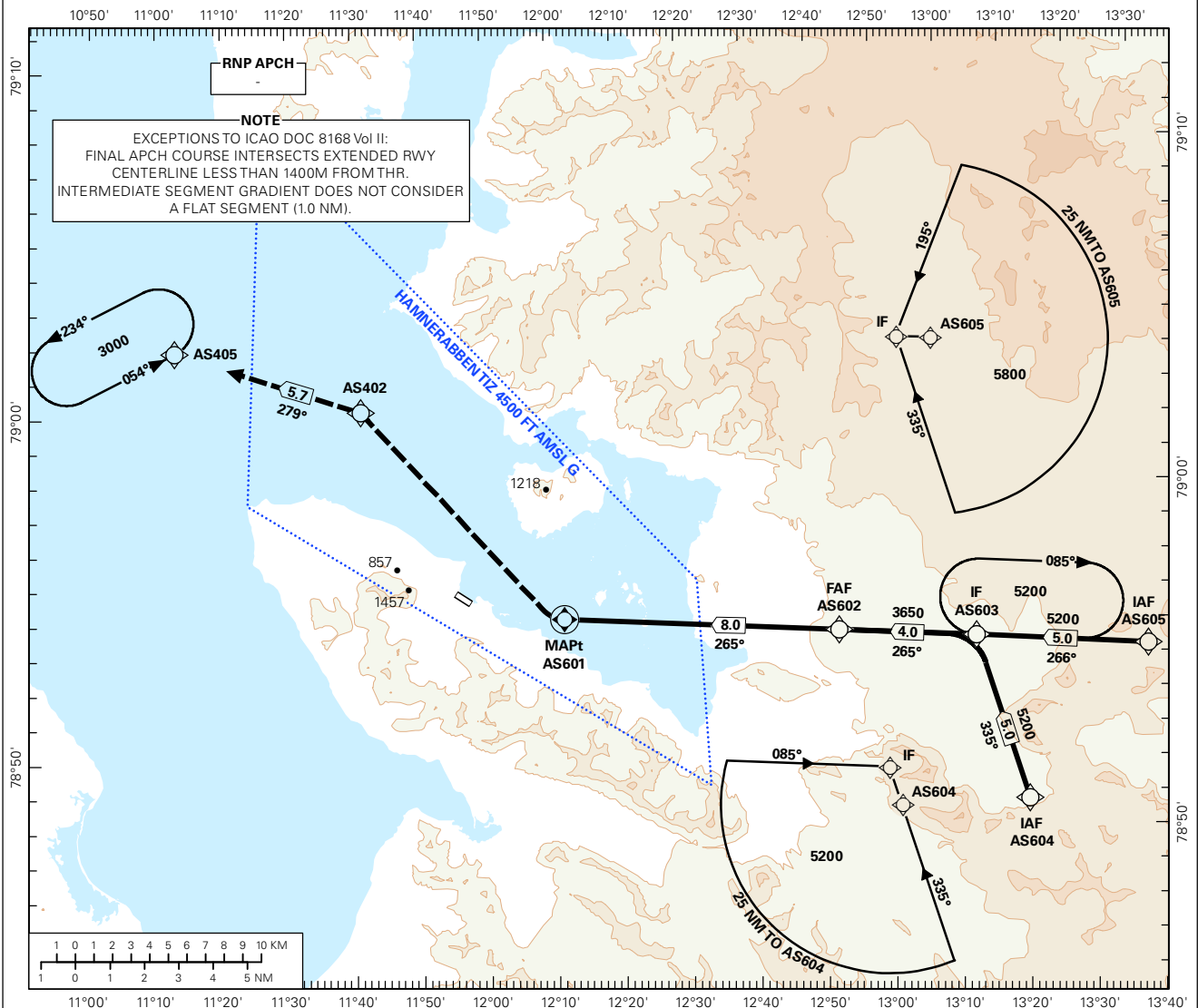
HAMNERABBen

RNAV(GNSS) RWY 30

TRANSITION ALTITUDE

5000

 <p>58 MSA 25 NM ARP</p>	AFIS: 123.900	AD ELEV: 131	
	VDF: 123.900	THR ELEV: 103	DIST IN NM
		HGT RELATED TO THR RWY 30	ELEV, ALT AND HGT IN FT
		CIRCLING HGT RELATED TO AD ELEV	
BEARINGS ARE MAGNETIC - VAR 4.9 ° E (2015)			



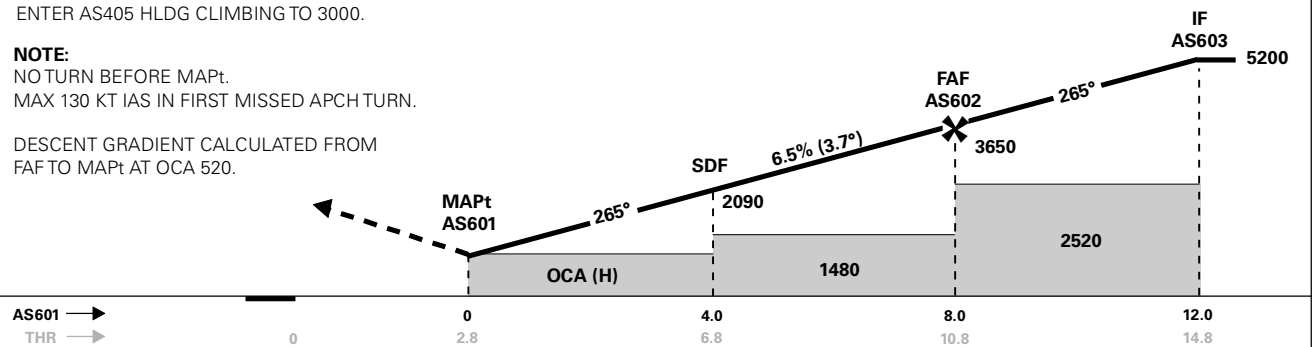
DIST TO AS601	8	7	6	5	4	3	2	1
ALT (HGT)	3650 (3547)	3260 (3157)	2870 (2767)	2480 (2377)	2090 (2077)	1700 (1597)	1310 (1207)	920 (817)

PROCEDURE OFFSET: 30°

MISSED APCH:
TURN RIGHT DCT AS402, THEN AS405.
ENTER AS405 HLDG CLIMBING TO 3000.

NOTE:
NO TURN BEFORE MAPt.
MAX 130 KT IAS IN FIRST MISSED APCH TURN.

DESCENT GRADIENT CALCULATED FROM
FAF TO MAPt AT OCA 520.



CAT OF ACFT	A	B	C	D	FINAL APCH	DIST FAF - MAPt: 8.0						
						SPEED	KT	70	90	100	120	130
OCA(H) STRAIGHT - IN	LNAV 2.5%*	760 (657)	1150 (1047)	-	-	TIME	MIN:SEC	06:52	05:20	04:48	04:00	03:42
	LNAV 3.5%*	660 (557)	1050 (947)	-	-	TIME	MIN:SEC	06:52	05:20	04:48	04:00	03:42
CIRCLING	LNAV 4.0%*	620 (517)	1000 (897)	-	-	ROD	FT/MIN	455	585	655	785	850
	LNAV 5.0%*	520 (417)	890 (787)	-	-							

NOTE: CIRCLING NE OF AD ONLY. *MNM MISSED APCH CLIMB GRADIENT.

CHANGES: NEW PROCEDURE.

RECOMMENDED RNAV PROCEDURE CODING

ENAS RNAV(GNSS) RWY 30										
Serial Number	Path Descriptor	Waypoint Identifier	Fly-over	Course °M(°T)	MAG VAR	DIST (NM)	Turn Dir	ALT (FT)	Speed (KT)	VPA/TCH
010	IF	AS604	-	-	-	-	-	A5200+	-	-
020	TF	AS603	-	335(340.1)	-	5.0	-	A5200+	-	-
010	IF	AS605	-	-	-	-	-	A5800+	-	-
020	TF	AS603	-	266(271.1)	-	5.0	-	A5200+	-	-
010	IF	AS603	-	-	-	-	-	A5200+	-	-
020	TF	AS602	-	265(270.2)	-	4.0	-	A3650+	-	-
030	TF	AS601	Y	265(269.9)	-	8.0	-	-	-	-
040	DF	AS402	-	-	-	-	-	A3000	-	-
050	TF	AS405	-	279(284.0)	-	5.7	-	A3000	-	-
060	HM	AS405	-	054(059.0)	-	-	L	A3000+	-	-

Note: Recommended RNAV procedure coding is based on ARINC 424-15 and is provided solely to indicate which procedure design protection areas were used in the Instrument Flight Procedure Design process.

Note: AS603 holding not included in standard APCH transitions.