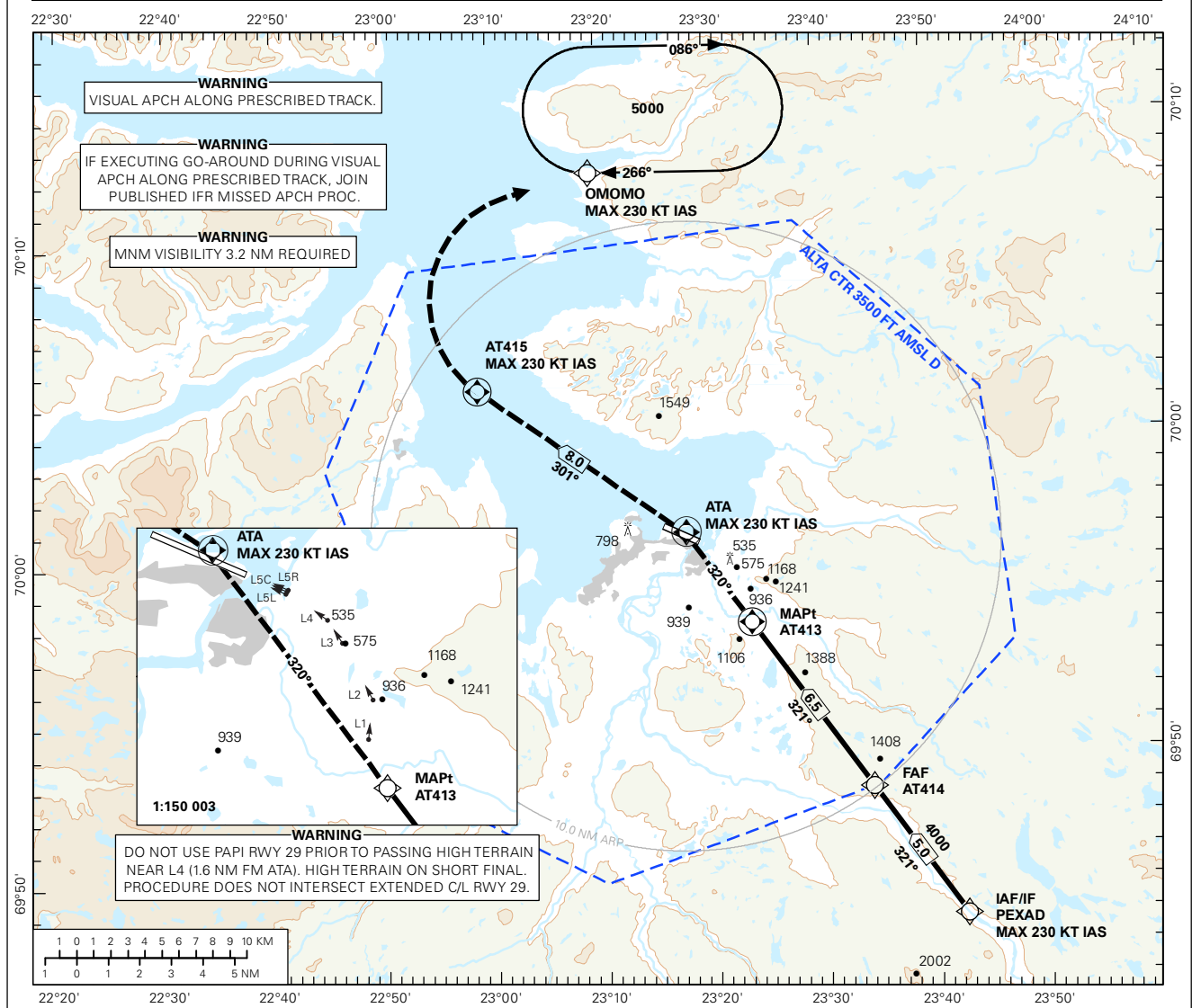


INSTRUMENT APPROACH CHART - ICAO PLAN VIEW SCALE: 1:400 000

<p>50</p> <p>MSA 25 NM ARP</p>	ATIS: 118.175	AD ELEV: 10		
	TWR: 120.400 118.100	THR ELEV: 9	DIST IN NM	
	APP: 120.400	HGT RELATED TO THR RWY 29	ELEV, ALT AND HGT IN FT	
	VDF: 120.400	CIRCLING HGT RELATED TO AD ELEV		RNAV(GNSS) - C TRANSITION ALTITUDE 7000
BEARINGS ARE MAGNETIC - VAR 10.6 ° E (2015)				

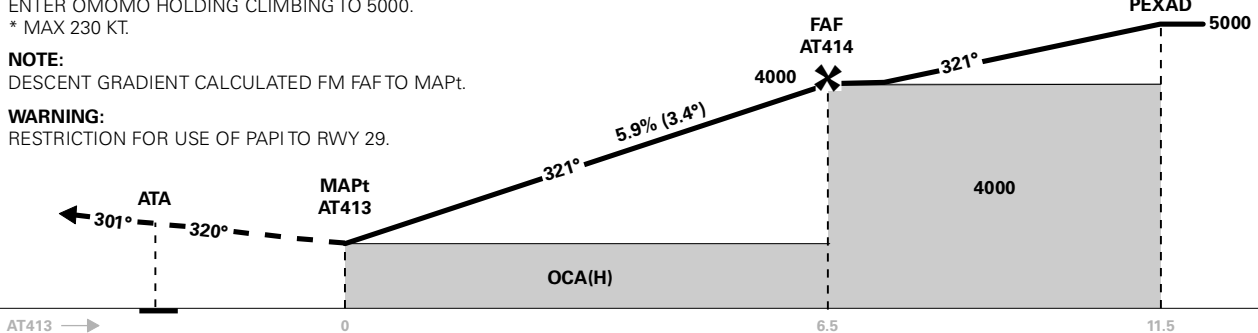


DIST TO AT413	8	7	6	5	4	3	2	1
ALT (HGT)	-	-	3830 (3820)	3480 (3470)	3120 (3110)	2760 (2750)	2400 (2390)	2040 (2030)

MISSED APCH:
 CLIMB TO ATA. TURN LEFT* TO AT415. TURN RIGHT* DCT OMOMO.
 ENTER OMOMO HOLDING CLIMBING TO 5000.
 * MAX 230 KT.

NOTE:
 DESCENT GRADIENT CALCULATED FM FAF TO MAPt.

WARNING:
 RESTRICTION FOR USE OF PAPI TO RWY 29.



CAT OF ACFT	A	B	C	D	FINAL APCH	DIST FAF - AT413: 6.5						
	OCA(H)						SPEED	KT	70	90	120	150
VISUAL APCH ALONG PRESCRIBED TRACK*	1690 (1680)					TIME	MIN:SEC	05:34	04:20	03:15	02:36	02:10
	1690 (1680)					ROD	FT/MIN	420	540	715	895	1075

NOTE: * PRESCRIBED TRACK ALONG LIGHTS TO RWY 29 (L1-L4-(L5C)). ** FOR STANDARD CIRCLING THE PANS-OPS OBSTACLE PROTECTION AREAS IS NOT COVERED AT MAPt FOR CAT A AND CAT B ACFT. CAT A AND B MAY FOLLOW THE MISSED APCH TRACK 320° TOWARDS ATA UNTIL INSIDE THEIR RESPECTIVE AREAS OR USE MINIMUM CAT C MINIMA 2080 (2070).

CHANGES: EDITORIALS.

RECOMMENDED RNAV PROCEDURE CODING

ENAT RNAV(GNSS)-C										
Serial Number	Path Descriptor	Waypoint Identifier	Fly-over	Course °M(°T)	MAG VAR	DIST (NM)	Turn Dir	ALT (FT)	Speed (KT)	VPA/TCH
01	IF	PEXAD	-	-	-	-	-	A5000+	K230-	-
02	TF	AT414	-	321(331.3)	-	5.0	-	A4000+	-	-
02	TF	AT413	Y	321(331.2)	-	6.5	-	-	-	-
03	TF	ATA	Y	320(331.1)	-	3.5	-	-	K230-	-
04	TF	AT415	Y	301(312.0)	-	8.0	-	-	K230-	-
05	DF	OMOMO	-	-	-	-	R	-	K230-	-
06	HM	OMOMO	-	266(276.7)	-	1 MIN	R	A5000	-	-

Note: Recommended RNAV procedure coding is based on ARINC 424-15 and is provided solely to indicate which procedure design protection areas were used in the Instrument Flight Procedure Design process.