

INSTRUMENT APPROACH CHART - ICAO PLAN VIEW SCALE: 1:250 000

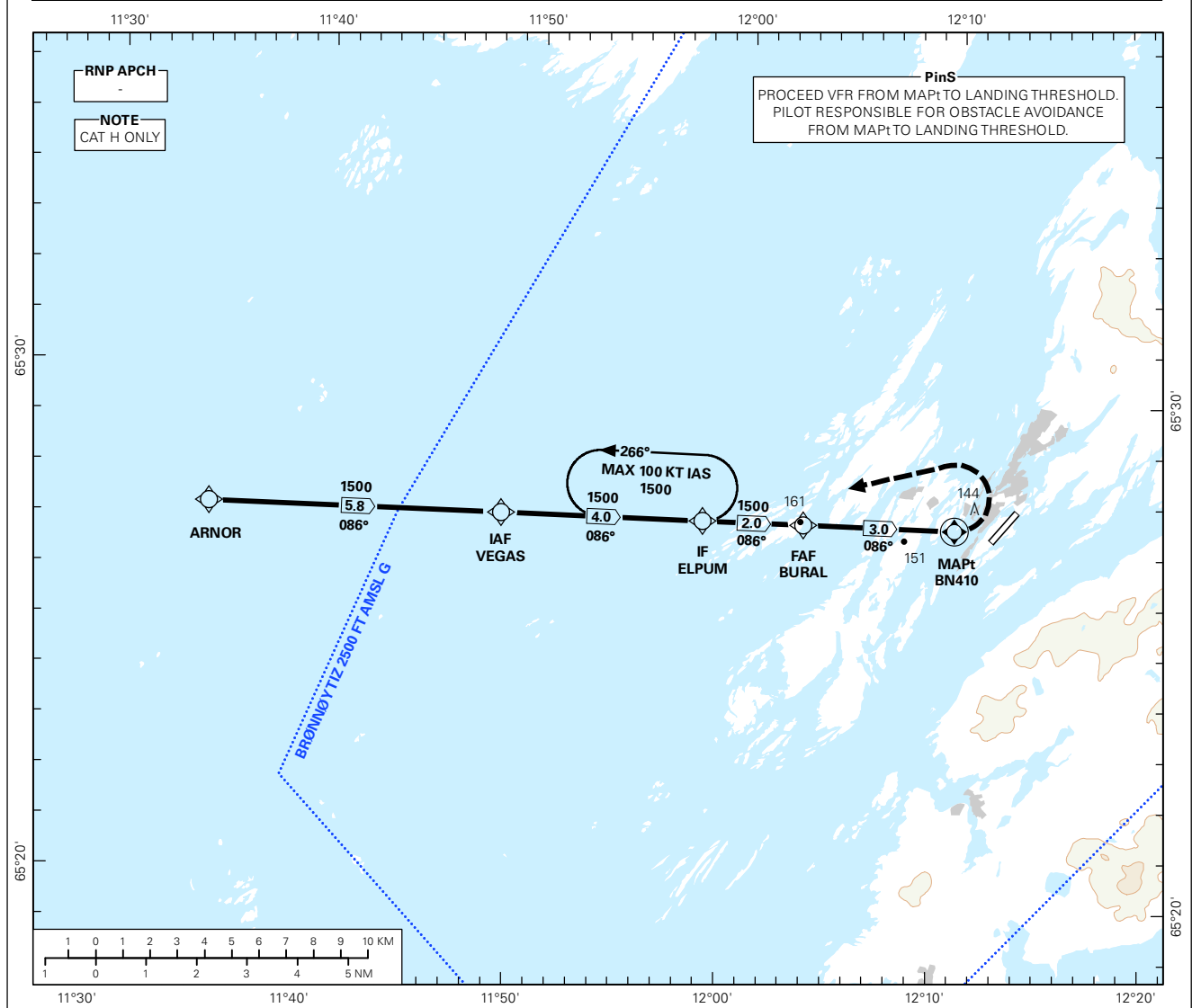
 MSA 25 NM BN410	ATIS: 135.900	AD ELEV: 25		
	APP: 127.900	THR ELEV: 14	DIST IN NM	
	AFIS: 119.600	HGT RELATED TO THR RWY 03	ELEV, ALT AND HGT IN FT	
	VDF: 119.600	CIRCLING HGT RELATED TO AD ELEV		
	BEARINGS ARE MAGNETIC - VAR 3.6 ° E (2015)			TRANSITION ALTITUDE 7000

BRØNNØYSUND

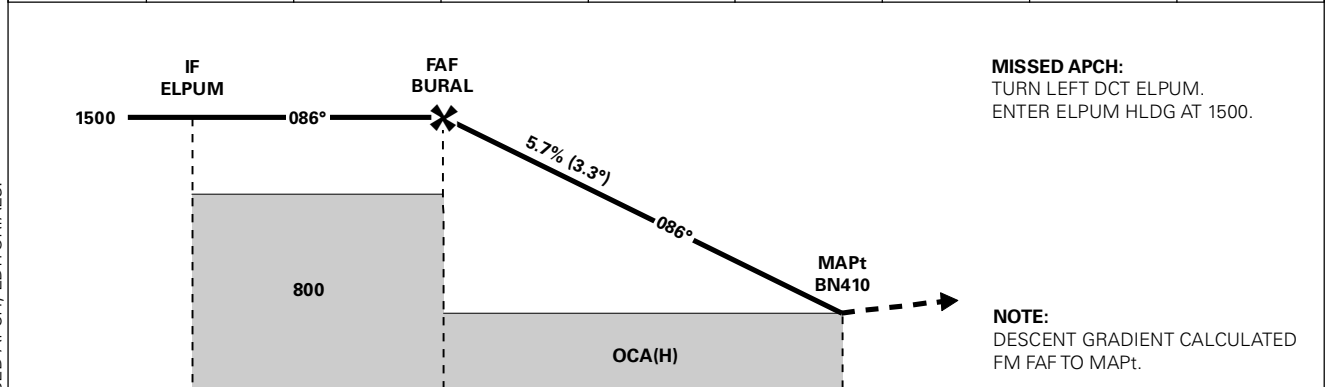
BRØNNØY

RNAV(GNSS) 086

TRANSITION ALTITUDE
7000



DIST TO BN410	8	7	6	5	4	3	2	1
ALT (HGT)	-	-	-	-	-	1500 (1486)	1160 (1146)	810 (796)



CAT OF ACFT	A	B	C	D	FINAL APCH	DIST FAF - MAPt: 3.0					
	LNAV	450 (436)	-	-	-	SPEED	KT	60	70	90	100
OCA(H)	-	-	-	-	TIME	MIN:SEC	03:00	02:35	02:00	-	-
CIRCLING	-	-	-	-	ROD	FT/MIN	350	410	525	-	-

NOTE: VISUAL MANOEUVRING REQUIRED.

CHANGES: OCH, MISSED APCH, EDITORIALS.

RECOMMENDED RNAV PROCEDURE CODING

ENBN RNAV(GNSS) 086										
Serial Number	Path Descriptor	Waypoint Identifier	Fly-over	Course °M(°T)	MAG VAR	DIST (NM)	Turn Dir	ALT (FT)	Speed (KT)	VPA/TCH
010	IF	ARNOR	-	-	-	-	-	A1500+	-	-
020	TF	VEGAS	-	-	-	5.8	-	A1500+	-	-
030	TF	ELPUM	-	-	-	4.0	-	A1500+	-	-
040	TF	BURAL	-	-	-	2.0	-	A1500+	-	-
050	TF	BN410	Y	-	-	3.0	-	-	-	-3.3
060	DF	ELPUM	-	-	-	-	L	A1500	-	-
070	HM	ELPUM	-	086 (090.0)	-	1 MIN	L	A1500+	K100-	-

Note: Recommended RNAV procedure coding is based on ARINC 424-15 and is provided solely to indicate which procedure design protection areas were used in the Instrument Flight Procedure Design process.

Note: ELPUM holding not included in standard APCH transitions