

INSTRUMENT APPROACH CHART - ICAO PLAN VIEW SCALE: 1:400 000

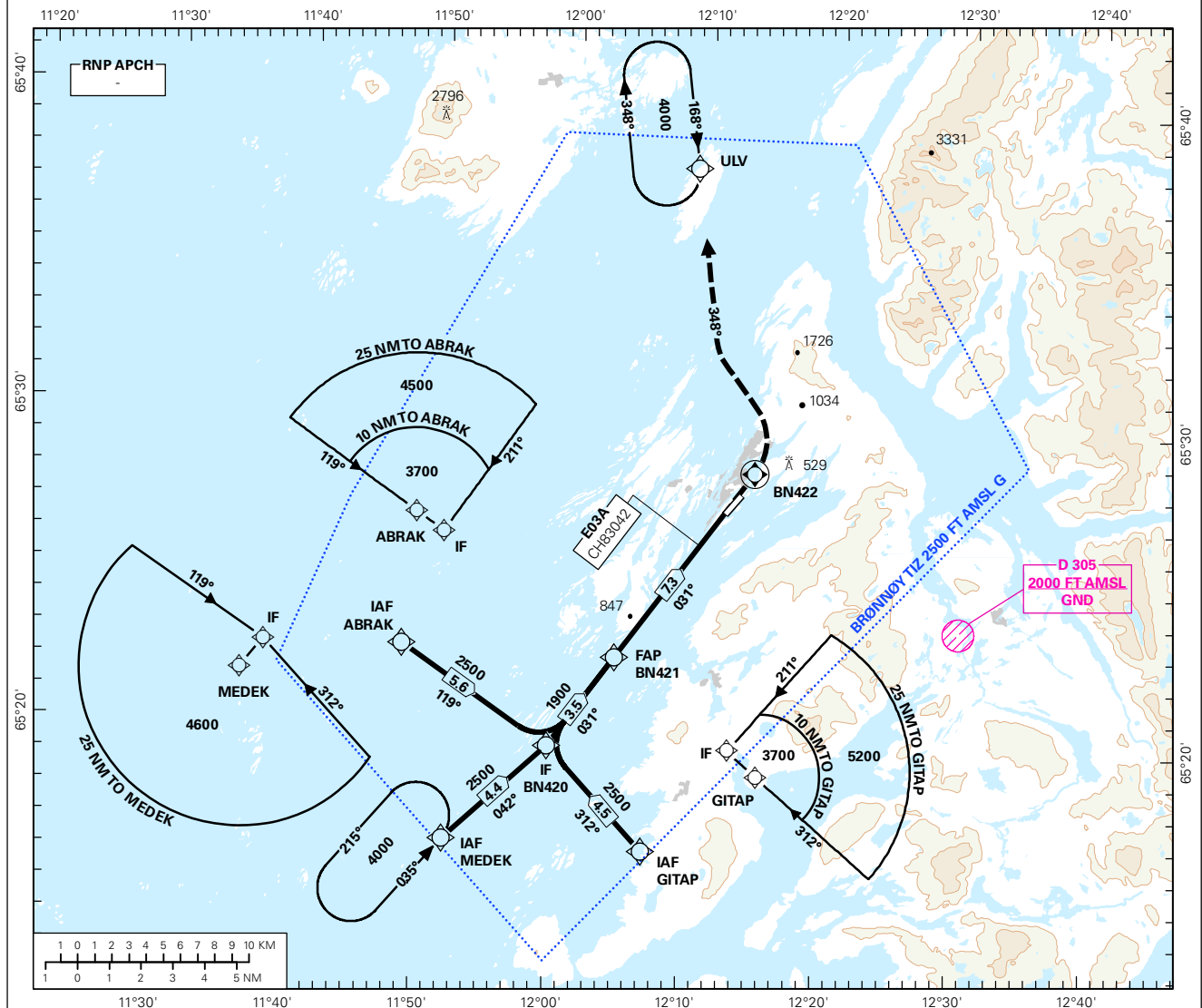
BRØNNØYSUND

BRØNNØY

RNAV(GNSS) X RWY 03

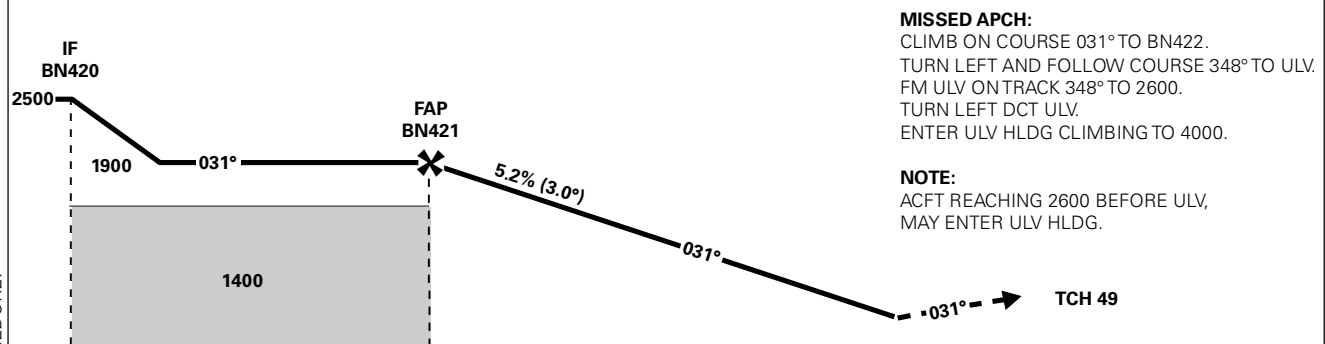
**TRANSITION ALTITUDE
7000**

ATIS: 135.900	AD ELEV: 25		
APP: 127.900	THR ELEV: 14	DIST IN NM	
AFIS: 119.600	HGT RELATED TO THR RWY 03	ELEV, ALT AND HGT IN FT	
VDF: 119.600	CIRCLING HGT RELATED TO AD ELEV		
BEARINGS ARE MAGNETIC - VAR 3.6 ° E (2015)			



DIST TO THR	9	8	7	6	5	4	3	2
ALT (HGT)	-	-	-	-	1680 (1666)	1360 (1346)	1030 (1016)	710 (696)

PROCEDURE OFFSET: 3.7°



MISSED APCH:
CLIMB ON COURSE 031° TO BN422.
TURN LEFT AND FOLLOW COURSE 348° TO ULV.
FM ULV ON TRACK 348° TO 2600.
TURN LEFT DCT ULV.
ENTER ULV HLDG CLIMBING TO 4000.

NOTE:
ACFT REACHING 2600 BEFORE ULV,
MAY ENTER ULV HLDG.

		9.3	5.8				0						← FTP
OCA(H) STRAIGHT - IN	CAT OF ACFT	A	B	C	D	FINAL APCH	DIST FAF - MAPt: 5.8						
	LPV 2.5%*	450 (436)	460 (446)	-	-	SPEED	KT	70	90	100	120	130	
	LPV 4.0%*	320 (306)	330 (316)	-	-	TIME	MIN:SEC						
CIRCLING	LPV 5.0%*	260 (246)		-	-	ROD	FT/MIN	370	480	530	635	690	
		470 (445)	740 (715)	-	-								

NOTE: CIRCLING W OF AD ONLY. *MNM MISSED APCH CLIMB GRADIENT.

CHANGES: NEW PROCEDURE.

RECOMMENDED RNAV PROCEDURE CODING

ENBN RNAV(GNSS) X RWY 03													
SN	PD	WI	Fly-over	°M (°T)	MAG VAR	DIST (NM)	REC NAV AID	TD	ALT (FT)	Speed (KT)	VPA/ TCH	ARC CENTRE RADIUS (NM)	NAV SPEC
010	IF	ABRAK	-	-	-	-	-	-	A3700+	-	-	-	RNP APCH
020	TF	BN420	-	-	-	5.6	-	-	A2500+	-	-	-	RNP APCH
010	IF	GITAP	-	-	-	-	-	-	A3700+	-	-	-	RNP APCH
020	TF	BN420	-	-	-	4.5	-	-	A2500+	-	-	-	RNP APCH
010	IF	MEDEK	-	-	-	-	-	-	A4600+	-	-	-	RNP APCH
020	TF	BN420	-	-	-	4.4	-	-	A2500+	-	-	-	RNP APCH
030	TF	BN421	-	-	-	3.5	-	-	A1900+	-	-	-	RNP APCH
040	TF	FTP	Y	-	-	5.8	-	-	-	-	-3.0/15	-	RNP APCH
050	TF	BN422	Y	-	-	1.5	-	-	-	-	-	-	RNP APCH
060	CF	ULV	-	348 (351.8)	-	-	ULV	L	-	-	-	-	RNP APCH
070	FA	-	-	348 (351.8)	-	-	ULV	-	A2600	-	-	-	RNP APCH
080	DF	ULV	-	-	-	-	-	L	-	-	-	-	RNP APCH
090	HM	ULV	-	168 (171.8)	-	1 MIN	-	R	A4000+	-	-	-	RNP APCH

Note: Recommended RNAV procedure coding is based on ARINC 424-15 and is provided solely to indicate which procedure design protection areas were used in the Instrument Flight Procedure Design process.

Note: The use of SBAS/GNSS geometric altitude as a source of altitude for approaches to LNAV/VNAV minima is permitted only for aircraft specifically certified for this type of operation. See "EASA-CM-AS-002 Clarifications to AMC 20-27" for additional information.

Note: Published OCA(H) values are obstacle clearance values. Decision heights (DH) below 250 FT shall not be used due to APV approach operation Type A limitations.

FAS DATA BLOCK

Operation type	0	LTP/FTP ellipsoidal height	41
SBAS Provider	1	FPAP latitude	652803.3360N
Airport Identifier	ENBN	FPAP longitude	0121332.1760E
Runway	03	Threshold crossing height	15
Approach performance designator	0	TCH units	M
Route Indicator	X	Glide path angle	3
Reference path data selector	0	Course width at threshold	105
Reference path Identifier	E03A	Length offset	0
LTP/FTP latitude	652718.5690N	Horizontal alert limit (HAL)	40
LTP/FTP longitude	0121216.4670E	Vertical alert limit (VAL)	50
		PRECISION APPROACH PATH CRC REMAINDER	315A333F

NON FAS DATA BLOCK FIELDS

LTP Ortometric Height	4.3
FPAP Ortometric Height	4.3