

INSTRUMENT APPROACH CHART - ICAO PLAN VIEW SCALE: 1:350 000

BRØNNØYSUND

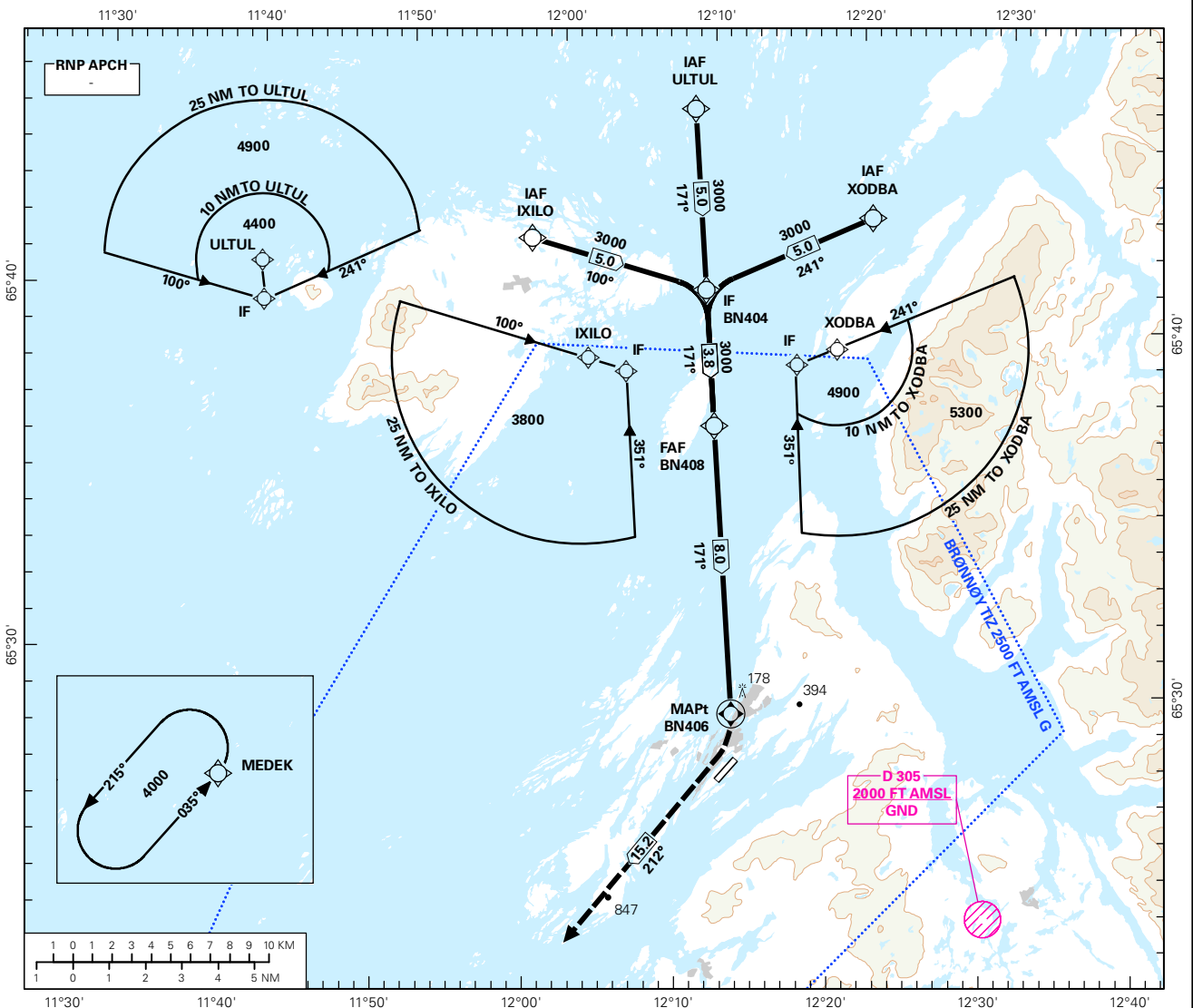
BRØNNØY

RNAV(GNSS) -A

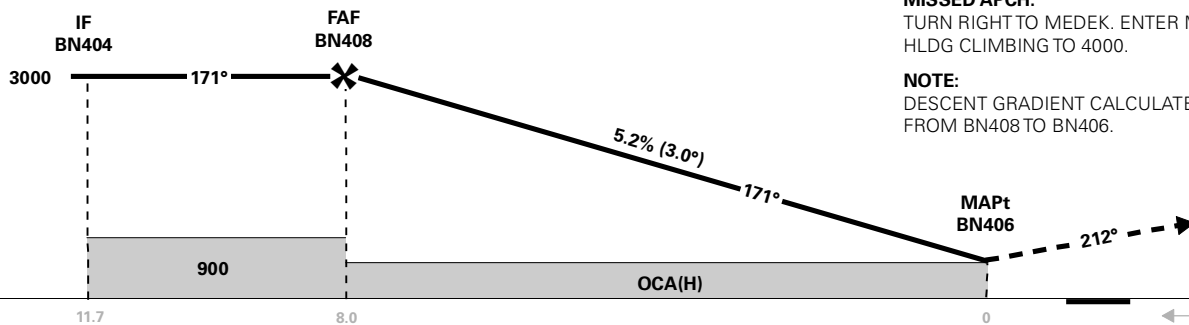
TRANSITION ALTITUDE

7000

ATIS: 135.900	AD ELEV: 25	
APP: 127.900		DIST IN NM
AFIS: 119.600		ELEV, ALT AND HGT IN FT
VDF: 119.600	CIRCLING HGT RELATED TO AD ELEV	
BEARINGS ARE MAGNETIC - VAR 3.6 ° E (2015)		



DIST TO BN406	8	7	6	5	4	3	2	1
ALT (HGT)	-	2700 (2675)	2380 (2355)	2070 (2045)	1750 (1725)	1430 (1405)	1110 (1085)	790 (765)



MISSED APCH:
TURN RIGHT TO MEDEK. ENTER MEDEK HLDG CLIMBING TO 4000.

NOTE:
DESCENT GRADIENT CALCULATED FROM BN408 TO BN406.

CAT OF ACFT	A	B	C	D	FINAL APCH	DIST FAF - BN406: 8.0					
						SPEED	KT	70	90	100	120
STRAIGHT - IN	-	-	-	-	TIME	MIN:SEC	06:49	05:18	04:47	03:59	03:41
CIRCLING	470 (445)	740 (715)	-	-	ROD	FT/MIN	370	480	530	635	690

NOTE: CIRCLING W OF AD ONLY.

CHANGES: NEW FAF, MISSED APCH, EDITORIALS.

RECOMMENDED RNAV PROCEDURE CODING

ENBN RNAV(GNSS)-A										
Serial Number	Path Descriptor	Waypoint Identifier	Fly-over	Course °M(°T)	MAG VAR	DIST (NM)	Turn Dir	ALT (FT)	Speed (KT)	VPA/TCH
010	IF	IXILO	-	-	-	-	-	A3800+	-	-
020	TF	BN404	-	-	-	5.0	-	A3000+	-	-
010	IF	XODBA	-	-	-	-	-	A4900+	-	-
020	TF	BN404	-	-	-	5.0	-	A3000+	-	-
010	IF	ULTUL	-	-	-	-	-	A4400+	-	-
020	TF	BN404	-	-	-	5.0	-	A3000+	-	-
030	TF	BN408	-	-	-	3.8	-	A3000+	-	-
040	TF	BN406	Y	-	-	8.0	-	-	-	-3.0
050	TF	MEDEK	-	-	-	15.2	-	A4000	-	-
060	HM	MEDEK	-	035(038.9)	-	1 MIN	L	A4000+	-	-

Note: Recommended RNAV procedure coding is based on ARINC 424-15 and is provided solely to indicate which procedure design protection areas were used in the Instrument Flight Procedure Design process.