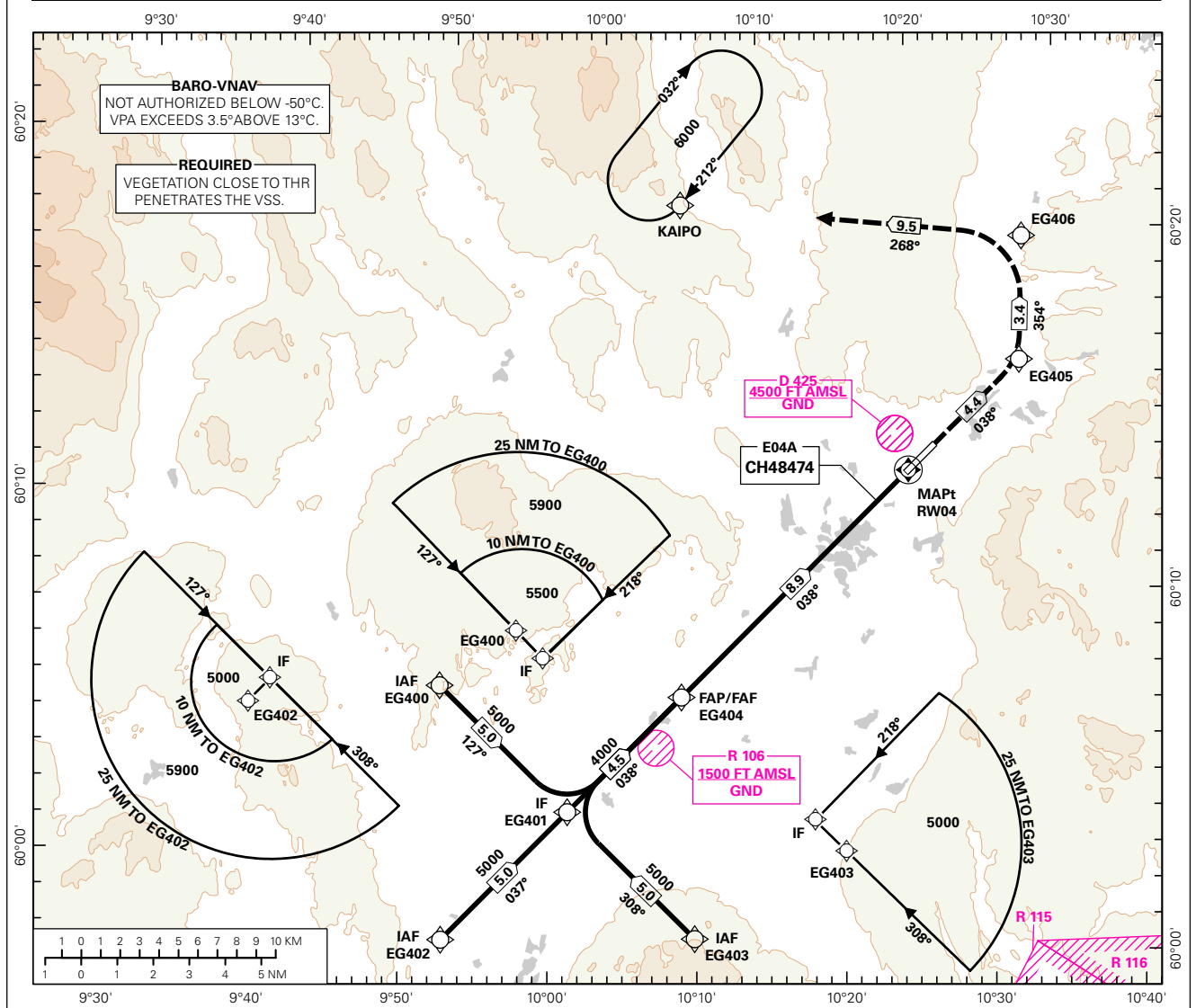
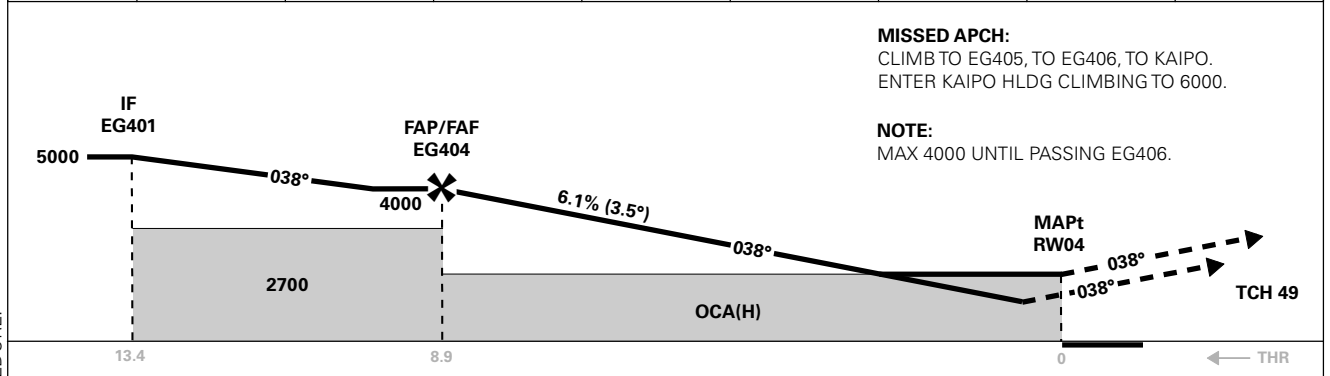


**INSTRUMENT APPROACH CHART - ICAO PLAN VIEW SCALE: 1:350 000**

APP: 118.475 120.450	AD ELEV: 652	DIST IN NM	<b>HØNEFOSS EGGEMOEN</b>
TFP: 122.700	THR ELEV: 634		
	HGT RELATED TO THR RWY 04	ELEV, ALT AND HGT IN FT	<b>RNAV(GNSS) RWY 04</b>
	CIRCLING HGT RELATED TO AD ELEV		TRANSITION ALTITUDE 7000
	BEARINGS ARE MAGNETIC - VAR 3° E (2015)		



DIST TO RW04	9	8	7	6	5	4	3	2
ALT (HGT)	-	3660 (3026)	3290 (2656)	2920 (2286)	2550 (1916)	2170 (1536)	1800 (1166)	1430 (796)



CAT OF ACFT	OCA(H)			
	A	B	C	D
LPV 2.5%*	1094 (460)	1108 (474)	-	-
LPV 4.0%*	895 (261)	910 (276)	-	-
LPV 5.0%*	855 (221)	870 (236)	-	-
LNAV/VNAV 2.5%*	1240 (606)	1250 (616)	-	-
LNAV/VNAV 4.0%*	1040 (406)	1050 (416)	-	-
LNAV/VNAV 5.0%*	950 (316)	960 (326)	-	-
LNAV 2.5%*	1400 (766)	1420 (786)	-	-
LNAV 4.0%*	1260 (626)	1290 (656)	-	-
LNAV 5.0%*	1160 (516)	1200 (566)	-	-
CIRCLING	1590 (938)	1970 (1318)	-	-

NOTE: CIRCLING W OF AD ONLY. \*MNM MISSED APCH CLIMB GRADIENT.

CHANGES: NEW PROCEDURE.

## RECOMMENDED RNAV PROCEDURE CODING

ENEG RNAV(GNSS) RWY 04													
SN	PD	WI	Fly-over	°M (°T)	MAG VAR	DIST (NM)	REC NAVAID	TD	ALT (FT)	Speed (KT)	VPA/TCH	ARC CENTRE RADIUS (NM)	NAV SPEC
010	IF	EG400	-	-	2.5	-	-	-	A5000+	-	-	-	RNP APCH
020	TF	EG401	-	-	2.5	5.0	-	-	A5000+	-	-	-	RNP APCH
010	IF	EG402	-	-	2.5	-	-	-	A5000+	-	-	-	RNP APCH
020	TF	EG401	-	-	2.5	5.0	-	-	A5000+	-	-	-	RNP APCH
010	IF	EG403	-	-	2.5	-	-	-	A5000+	-	-	-	RNP APCH
020	TF	EG401	-	-	2.5	5.0	-	-	A5000+	-	-	-	RNP APCH
030	TF	EG404	-	-	2.5	4.5	-	-	A4000+	-	-	-	RNP APCH
040	TF	RW04	Y	-	2.5	8.9	-	-	-	-	-3.5/15	-	RNP APCH
050	TF	EG405	-	-	2.5	4.4	-	-	A4000-	-	-	-	RNP APCH
060	TF	EG406	-	-	2.5	3.4	-	-	A4000-	-	-	-	RNP APCH
070	TF	KAIPO	-	-	2.5	9.5	-	-	A6000	-	-	-	RNP APCH
080	HM	KAIPO	-	213(215.0)	2.5	1 MIN	-	R	A6000+	-	-	-	RNP APCH

Note: Recommended RNAV procedure coding is based on ARINC 424-15 and is provided solely to indicate which procedure design protection areas were used in the Instrument Flight Procedure Design process.

Note: Published OCA(H) values are obstacle clearance values. Decision heights (DH) below 250 FT shall not be used due to approach operation Type A limitations.

## FAS DATA BLOCK

Operation type	0	LTP/FTP ellipsoidal height	233.3
SBAS Provider	1	FPAP latitude	601318.0955N
Airport Identifier	ENEG	FPAP longitude	0101951.4010E
Runway	RW04	Threshold crossing height	15
Approach performance designator	0	TCH units	M
Route Indicator	-	Glide path angle	3.5
Reference path data selector	0	Course width at threshold	105
Reference path Identifier	E04A	Length offset	0
LTP/FTP latitude	601231.2295N	Horizontal alert limit (HAL)	40
LTP/FTP longitude	0101830.0505E	Vertical alert limit (VAL)	35
PRECISION APPROACH PATH CRC REMAINDER			97B0BDC8