

INSTRUMENT APPROACH CHART - ICAO PLAN VIEW SCALE: 1:350 000

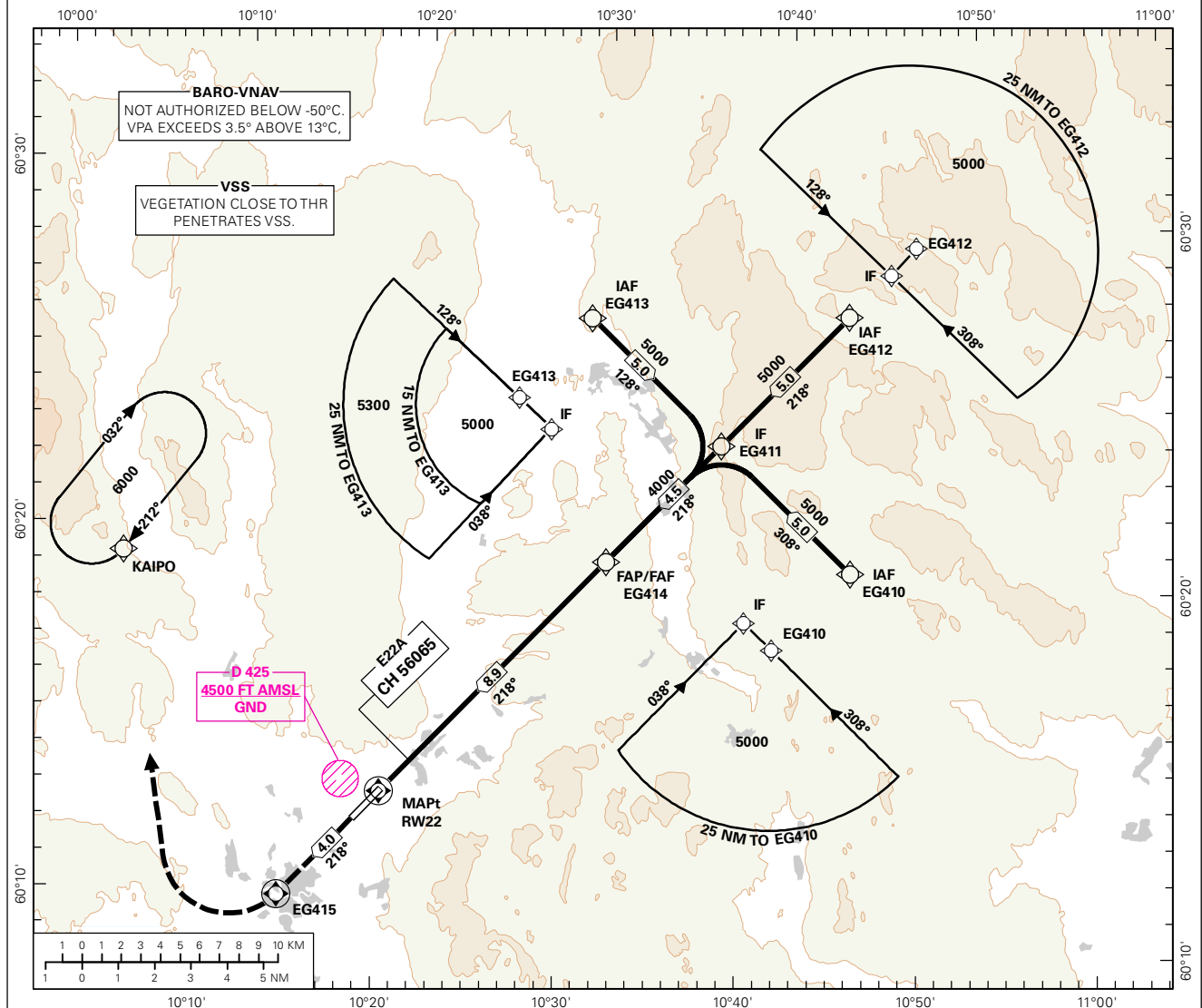
HØNEFOSS

EGGEMOEN

RNAV(GNSS) RWY 22

TRANSITION ALTITUDE
7000

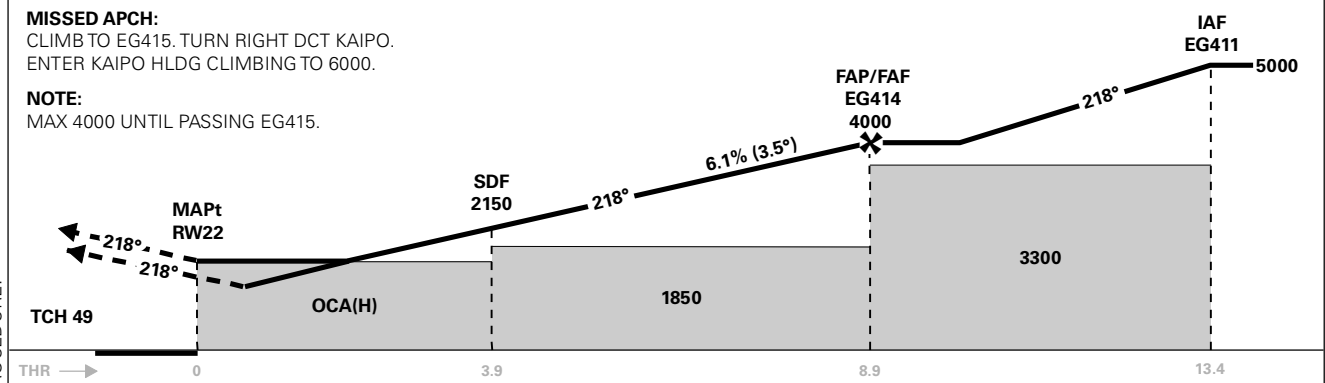
APP: 118.475 120.450	AD ELEV: 652	
TFC: 122.700	THR ELEV: 652	DIST IN NM
	HGT RELATED TO THR RWY 22	ELEV, ALT AND HGT IN FT
	CIRCLING HGT RELATED TO AD ELEV	
	BEARINGS ARE MAGNETIC - VAR 3° E (2015)	



DIST TO RW22	10	9	8	7	6	5	4	3
ALT (HGT)	-	-	3680 (3028)	3310 (2658)	2940 (2288)	2560 (1908)	2190 (1538)	1820 (1168)

MISSED APCH:
CLIMB TO EG415. TURN RIGHT DCT KAIPO.
ENTER KAIPO HLDG CLIMBING TO 6000.

NOTE:
MAX 4000 UNTIL PASSING EG415.



CAT OF ACFT		A	B	C	D
OCA(H) STRAIGHT - IN	LPV 2.5%*	1036 (384)	1050 (398)	-	-
	LPV 3.0%*	875 (223)	890 (238)	-	-
	LNAV/VNAV	1460 (808)	1470 (818)	-	-
	LNAV	1520 (868)		-	-
CIRCLING		1590 (938)	1970 (1318)	-	-

NOTE: CIRCLING W OF AD ONLY. *MNM MISSED APCH CLIMB GRADIENT.

CHANGES: NEW PROCEDURE.

RECOMMENDED RNAV PROCEDURE CODING

ENEG RNAV(GNSS) RWY 22													
SN	PD	WI	Fly-over	°M (°T)	MAG VAR	DIST (NM)	REC NAVAID	TD	ALT (FT)	Speed (KT)	VPA/TCH	ARC CENTRE RADIUS (NM)	NAV SPEC
010	IF	EG410	-	-	2.5	-	-	-	A5000+	-	-	-	RNP APCH
020	TF	EG411	-	-	2.5	5.0	-	-	A5000+	-	-	-	RNP APCH
010	IF	EG412	-	-	2.5	-	-	-	A5000+	-	-	-	RNP APCH
020	TF	EG411	-	-	2.5	5.0	-	-	A5000+	-	-	-	RNP APCH
010	IF	EG413	-	-	2.5	-	-	-	A5000+	-	-	-	RNP APCH
020	TF	EG411	-	-	2.5	5.0	-	-	A5000+	-	-	-	RNP APCH
030	TF	EG414	-	-	2.5	4.5	-	-	A4000+	-	-	-	RNP APCH
040	TF	RW22	Y	-	2.5	8.9	-	-	-	-	-3.5/15	-	RNP APCH
050	TF	EG415	Y	-	2.5	4.0	-	-	A4000-	-	-	-	RNP APCH
060	DF	KAIPO	-	-	2.5	-	-	-	A6000	-	-	-	RNP APCH
070	HM	KAIPO	-	213(215.0)	2.5	1 MIN	-	R	A6000+	-	-	-	RNP APCH

Note: Recommended RNAV procedure coding is based on ARINC 424-15 and is provided solely to indicate which procedure design protection areas were used in the Instrument Flight Procedure Design process.

Note: Published OCA(H) values are obstacle clearance values. Decision heights (DH) below 250 FT shall not be used due to approach operation Type A limitations.

FAS DATA BLOCK

Operation type	0	LTP/FTP ellipsoidal height	238.7
SBAS Provider	1	FPAP latitude	601226.5740N
Airport Identifier	ENEG	FPAP longitude	0101821.9740E
Runway	RW22	Threshold crossing height	15
Approach performance designator	0	TCH units	M
Route Indicator	-	Glide path angle	3.5
Reference path data selector	0	Course width at threshold	105
Reference path Identifier	E22A	Length offset	0
LTP/FTP latitude	601314.4000N	Horizontal alert limit (HAL)	40
LTP/FTP longitude	0101944.9830E	Vertical alert limit (VAL)	35
PRECISION APPROACH PATH CRC REMAINDER			A0060717