

INSTRUMENT APPROACH CHART - ICAO PLAN VIEW SCALE: 1:350 000

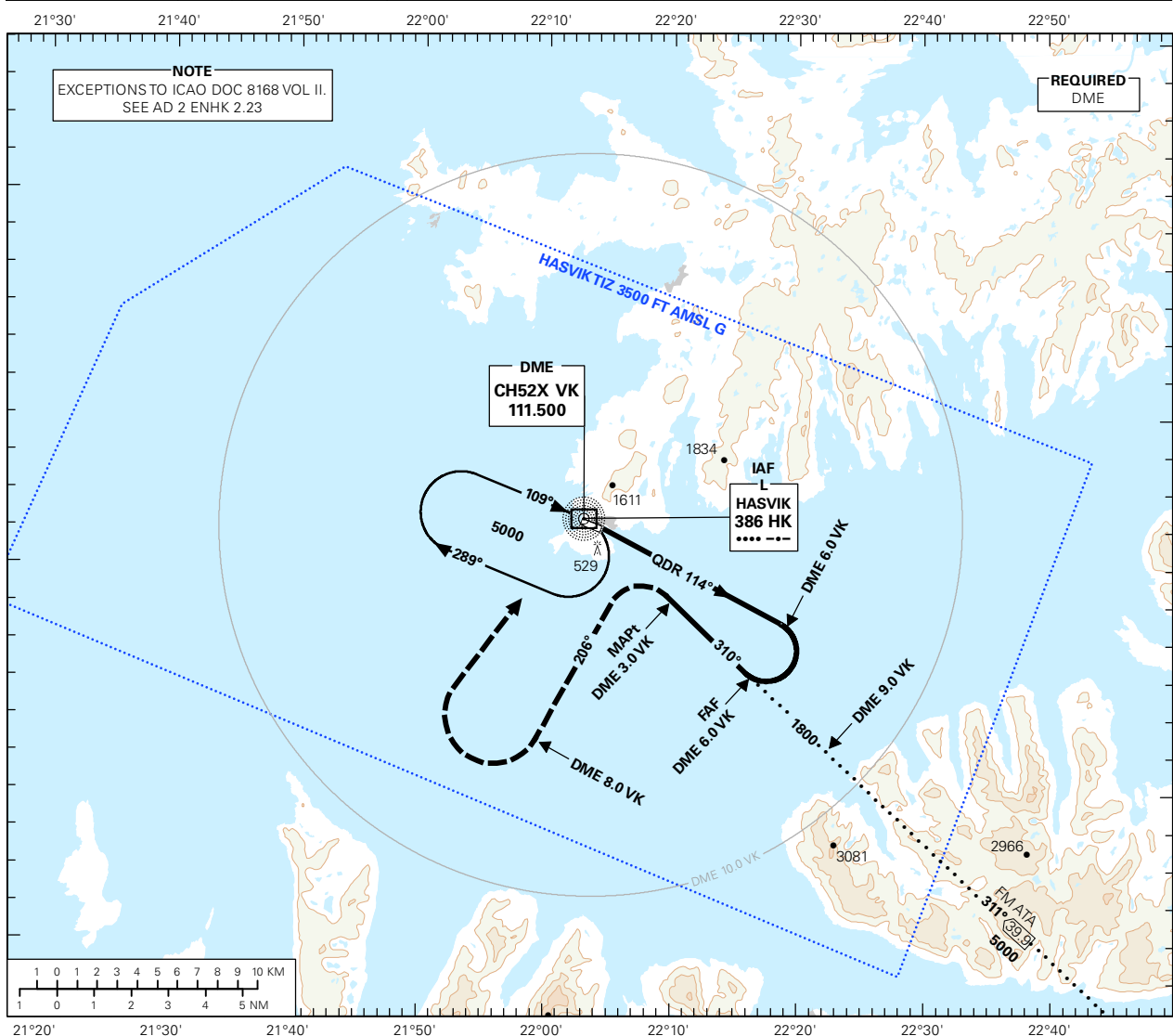
HASVIK

HASVIK

NDB RWY 29

**TRANSITION ALTITUDE
7000**

APP: 126.700	AD ELEV: 23	
AFIS: 119.900	THR ELEV: 12	DIST IN NM
VDF: 119.900	HGT RELATED TO THR RWY 29	ELEV, ALT AND HGT IN FT
CIRCLING HGT RELATED TO AD ELEV		
BEARINGS ARE MAGNETIC - VAR 10.1 ° E (2015)		

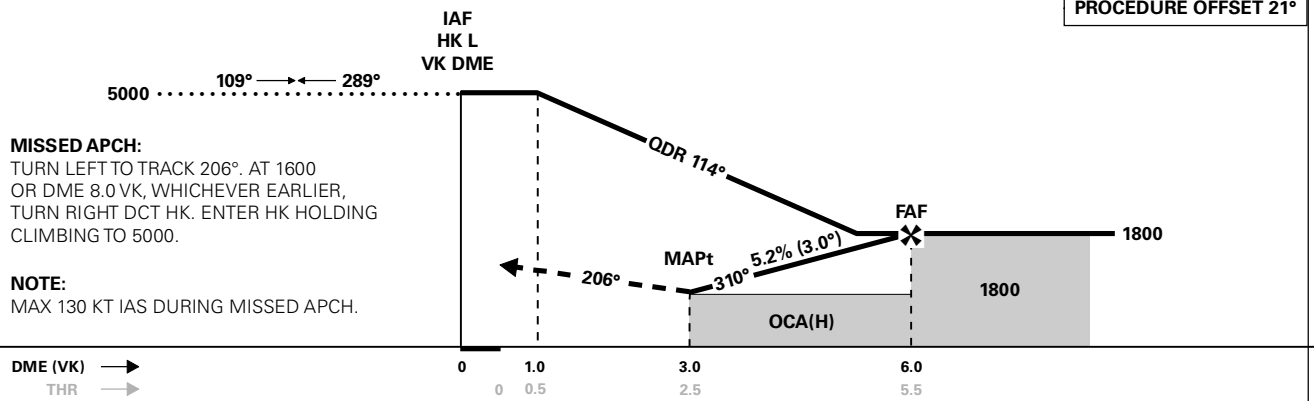


DIST TO VK	11	10	9	8	7	6	5	4
ALT (HGT)	-	-	-	-	-	1800 (1168)	1490 (1478)	1180 (1788)

PROCEDURE OFFSET 21°

MISSED APCH:
TURN LEFT TO TRACK 206°. AT 1600 OR DME 8.0 VK, WHICHEVER EARLIER, TURN RIGHT DCT HK. ENTER HK HOLDING CLIMBING TO 5000.

NOTE:
MAX 130 KT IAS DURING MISSED APCH.



CAT OF ACFT	A	B	C	D	FINAL APCH	DIST FAF - MAPt: 3.0					
	860 (848)						SPEED	KT	70	90	100
OCA(H) STRAIGHT - IN	-	-	-	-	TIME	MIN:SEC	02:35	02:00	01:48	01:30	01:24
	890 (867)				ROD	FT/MIN	365	470	525	630	680

NOTE: CIRCLING S OF AD ONLY.

CHANGES: MAGNETIC VARIATION, EDITORIALS.