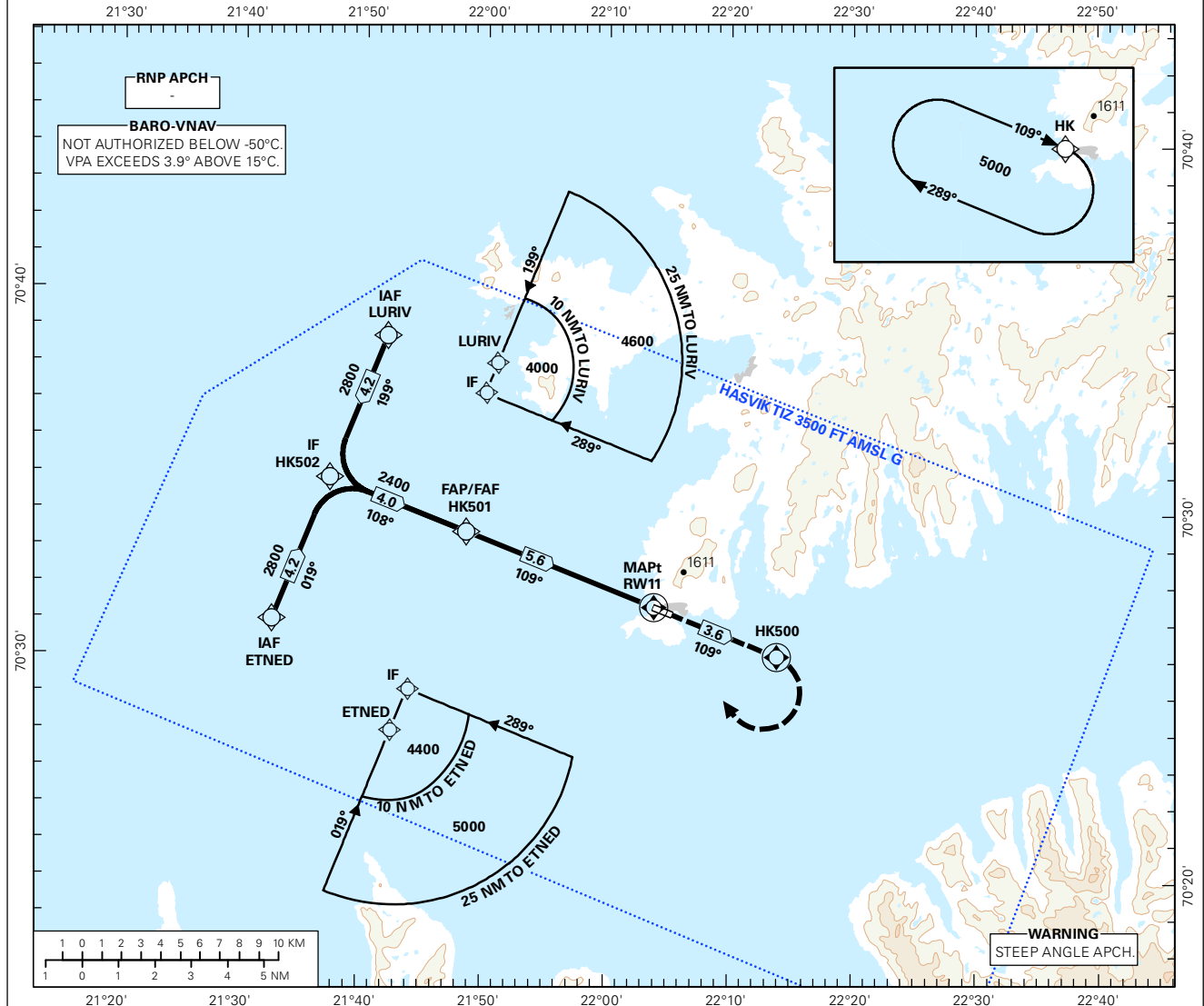
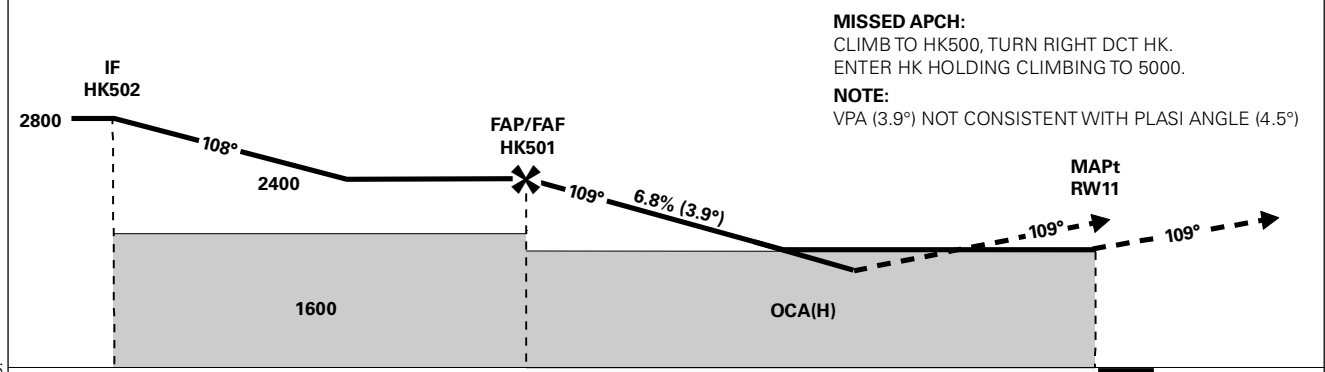


INSTRUMENT APPROACH CHART - ICAO PLAN VIEW SCALE: 1:350 000

APP: 126.700	AD ELEV: 23			HASVIK HASVIK
AFIS: 119.900	THR ELEV: 21	DIST IN NM		
VDF: 119.900	HGT RELATED TO THR RWY 11	ELEV, ALT AND HGT IN FT		RNAV(GNSS) RWY 11
CIRCLING HGT RELATED TO AD ELEV			TRANSITION ALTITUDE	
BEARINGS ARE MAGNETIC - VAR 10.1 ° E (2015)			7000	



DIST TO RW11	11	10	9	8	7	6	5	4
ALT (HGT)	-	-	-	-	-	-	2160 (2139)	1740 (1719)



CAT OF ACFT		A	B	C	D							
OCA(H) STRAIGHT - IN	LNAV/VNAV 2.5%*	1280 (1259)	1290 (1269)	-	-	FINAL APCH	DIST FAF - MAPt: 5.6					
	LNAV/VNAV 3.0%*	1220 (1199)	1240 (1219)	-	-							
	LNAV/VNAV 4.0%*	1130 (1109)	1150 (1129)	-	-							
	LNAV/VNAV 5.0%*	1050 (1029)	1070 (1049)	-	-							
CIRCLING	LNAV 2.5%*	1530 (1509)	-	-	-	SPEED	KT	70	90	100	120	130
		1530 (1507)	-	-	-	TIME	MIN:SEC	04:48	03:44	03:22	02:48	02:36
						ROD	FT/MIN	485	625	695	835	900

NOTE: CIRCLING S OF AD ONLY. *MNM MISSED APCH CLIMB GRADIENT.

CHANGES: EDITORIALS.

RECOMMENDED RNAV PROCEDURE CODING

ENHK RNAV(GNSS) RWY 11										
Serial Number	Path Descriptor	Waypoint Identifier	Fly-over	Course °M(°T)	MAG VAR	DIST (NM)	Turn Dir	ALT (FT)	Speed (KT)	VPA/TCH
010	IF	ETNED	-	-	-	-	-	A4400+	-	-
020	TF	HK502	-	-	-	4.2	-	A2800+	-	-
010	IF	LURIV	-	-	-	-	-	A4000+	-	-
020	TF	HK502	-	-	-	4.2	-	A2800+	-	-
030	TF	HK501	-	-	-	4.0	-	A2400+	-	-
040	TF	RW11	Y	-	-	5.6	-	-	-	-3.9/15
050	TF	HK500	Y	-	-	3.6	-	-	-	-
060	DF	HK	-	-	-	-	R	-	-	-
070	HM	HK	-	109(118.8)	-	1 MIN	R	A5000+	-	-

Note: Recommended RNAV procedure coding is based on ARINC 424-15 and is provided solely to indicate which procedure design protection areas were used in the Instrument Flight Procedure Design process.

Note: Published OCA(H) values are obstacle clearance values. Decision heights (DH) below 250 FT shall not be used due to APV approach operation Type A limitations.