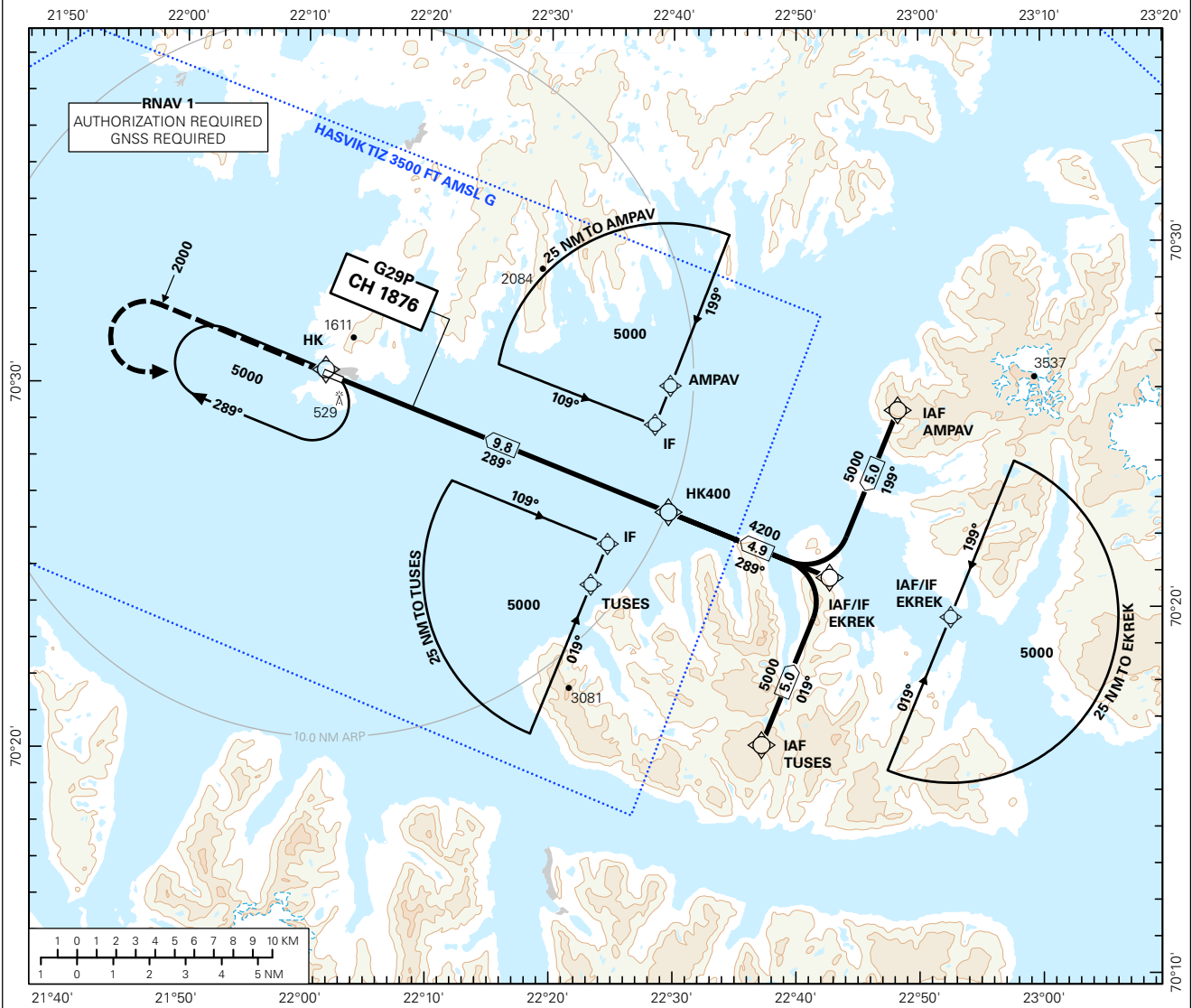


INSTRUMENT APPROACH CHART - ICAO PLAN VIEW SCALE: 1:350 000

APP: 126.700	AD ELEV: 23	
AFIS: 119.900	THR ELEV: 12	DIST IN NM
VDF: 119.900	HGT RELATED TO THR RWY 29	ELEV, ALT AND HGT IN FT
CIRCLING HGT RELATED TO AD ELEV		TRANSITION ALTITUDE
BEARINGS ARE MAGNETIC - VAR 10.1 ° E (2015)		7000

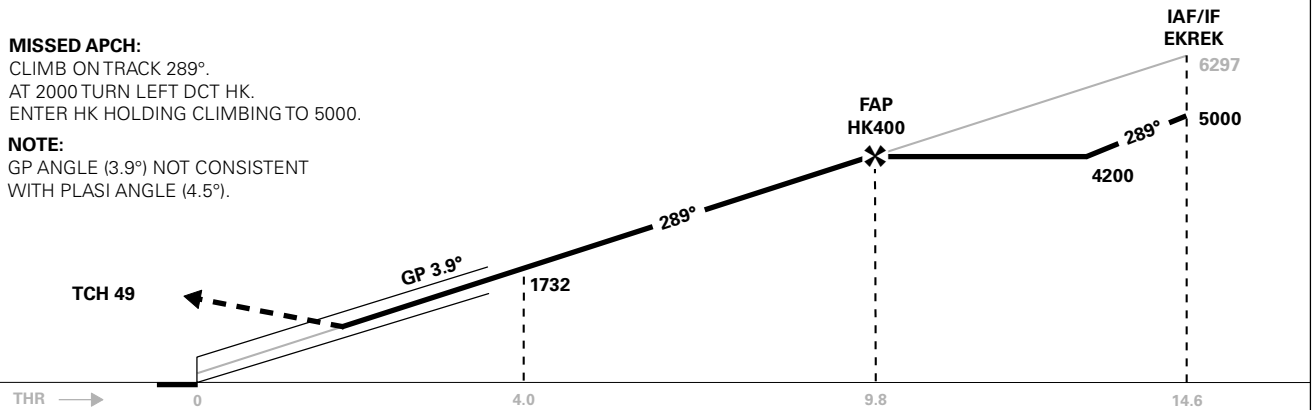
HASVIK
HASVIK
GLS RWY 29



DIST TO THR	8	7	6	5	4	3	2	1
ALT (HGT)	3431 (3419)	3004 (2992)	2578 (2566)	2154 (2142)	1732 (1720)	1312 (1300)	893 (881)	476 (464)

MISSED APCH:
CLIMB ON TRACK 289°.
AT 2000 TURN LEFT DCT HK.
ENTER HK HOLDING CLIMBING TO 5000.

NOTE:
GP ANGLE (3.9°) NOT CONSISTENT
WITH PLASI ANGLE (4.5°).



CAT OF ACFT	A	B	C	D	FINAL APCH	DIST FAP - THR: 9.8						
	2.5%*	938 (925)	957 (944)	-		-	SPEED	KT	70	90	100	120
OCA(H)	3.0%*	301 (288)	320 (308)	-	-	ROD	FT/MIN	485	620	690	830	900
SCAT - I		-	-	-								
CIRCLING		940 (917)	960 (937)	-	-							

NOTE: CIRCLING S OF AD ONLY. *MNM MISSED APCH CLIMB GRADIENT.

CHANGES: MAGNETIC VARIATION, EDITORIALS.

SCAT-I: Special CAT-I, REF AIP Norge, GEN 1.5 and AD 1.1 paragraf 6.3

Det kreves spesiell godkjenning fra Luftfartstilsynet for å kunne bruke SCAT-I prosedyrer operativt.

Beslutningshøyder (DH) under 400 FT skal ikke brukes.

GLS VHF-data sendes på FREQ 115.500 MHZ

Under planlegging av en GLS presisjonsinnflyging skal piloter kontrollere at prosedyren vil være tilgjengelig. Mangel på GPS-signal og feil ved bakkestasjonen vil bli publisert ved bruk av NOTAM. Tekst som benyttes ved varslet mangelfull GNSS-dekning vil være "SCAT-I GPS OUTAGE PREDICTED".

Meldepunkt-kordinater er publisert i ENR 4.4

SCAT-I: Special CAT-I, REF AIP Norway, GEN 1.5 and AD 1.1 paragraph 6.3

Special authorization from the Norwegian Civil Aviation Authority is required prior to operational use of SCAT-I procedures.

Decision heights (DH) below 400 FT shall not be used.

GLS VHF data is transmitted on FREQ 115.500 MHZ.

When planning a GLS precision approach pilots shall check the availability of the instrument approach procedure. Predicted GPS outages and ground station irregularities will be published using NOTAM. Text used when insufficient GNSS coverage has been predicted will be "SCAT-I GPS OUTAGE PREDICTED".

Waypoint coordinates are published in ENR 4.4