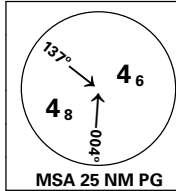


**INSTRUMENT APPROACH CHART - ICAO PLAN VIEW SCALE: 1:350 000**

LAKSELV

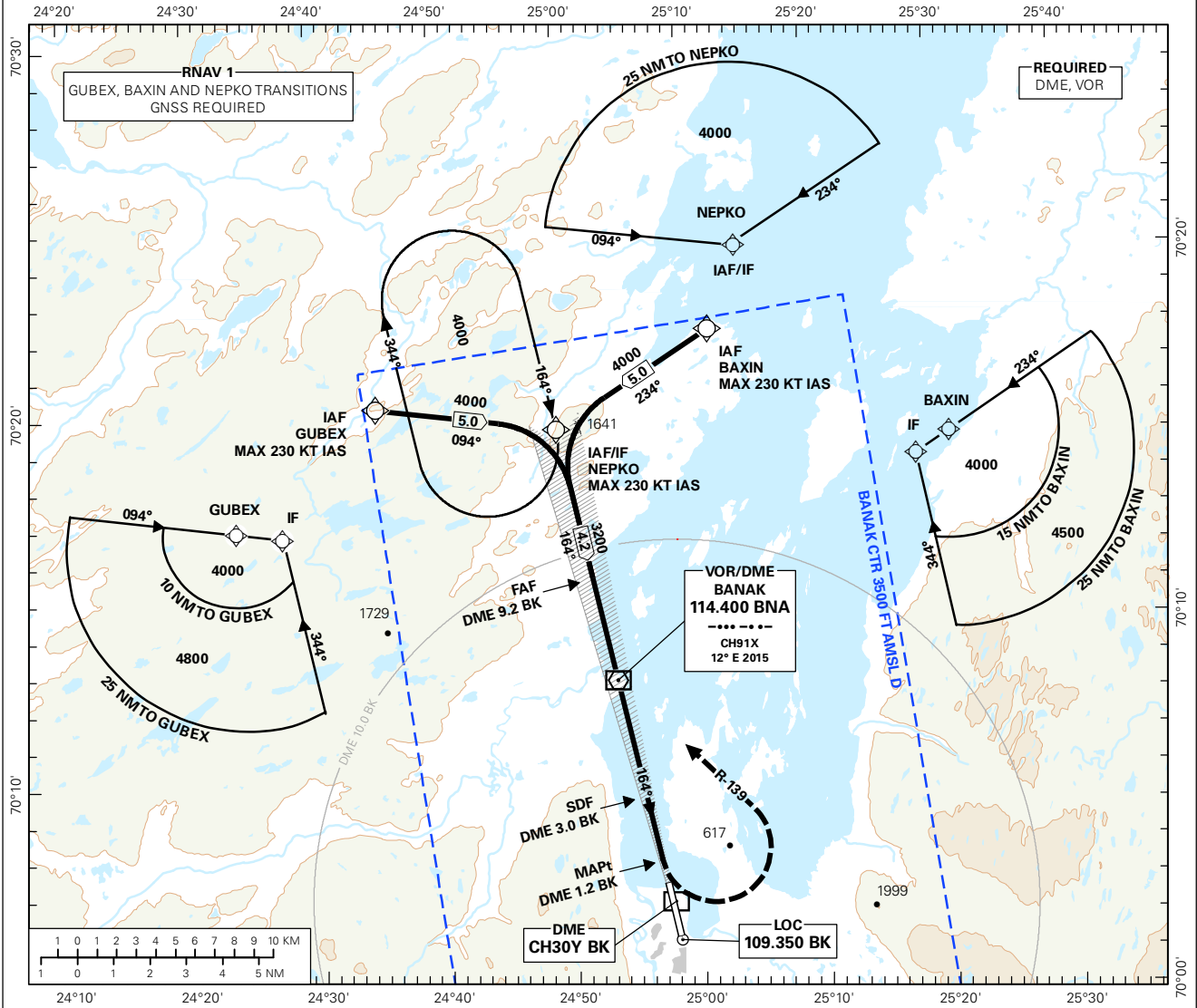
**BANAK**

**LOC Y RWY 16**

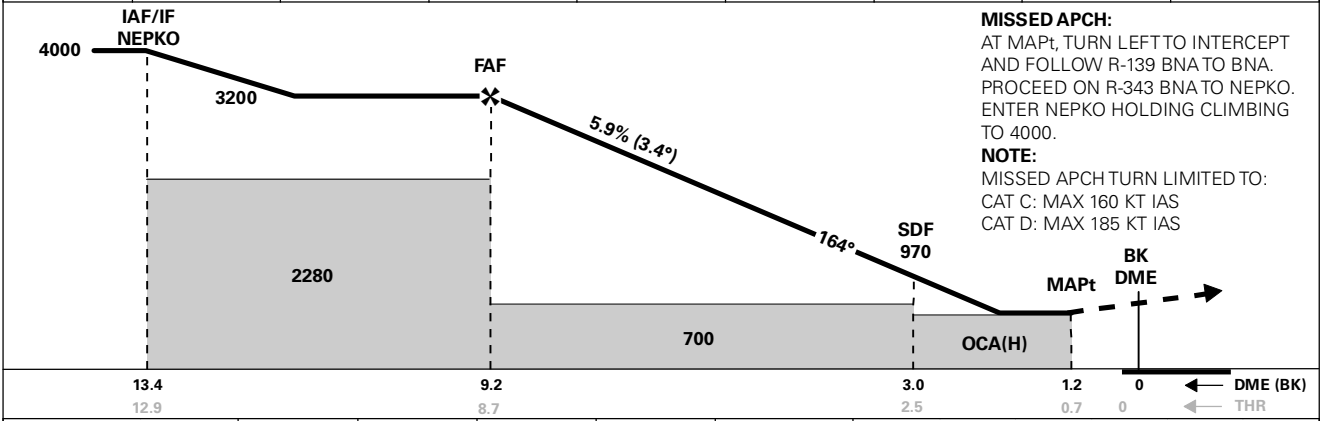


ATIS: 136.325	AD ELEV: 25		
TWR: 118.900 118.050 122.100	THR ELEV: 15	DIST IN NM	
HGT RELATED TO THR RWY 16		ELEV, ALT AND HGT IN FT	
CIRCLING HGT RELATED TO AD ELEV			
BEARINGS ARE MAGNETIC - VAR 11.5 ° E (2015)			

TRANSITION ALTITUDE  
**7000**



DIST TO BK	9	8	7	6	5	4	3	2
ALT (HGT)	3130 (3115)	2770 (2755)	2410 (2395)	2050 (2035)	1690 (1675)	1330 (1315)	970 (955)	610 (595)



**MISSED APCH:**  
AT MAPt, TURN LEFT TO INTERCEPT AND FOLLOW R-139 BNA TO BNA. PROCEED ON R-343 BNA TO NEPKO. ENTER NEPKO HOLDING CLIMBING TO 4000.  
**NOTE:**  
MISSED APCH TURN LIMITED TO:  
CAT C: MAX 160 KT IAS  
CAT D: MAX 185 KT IAS

CAT OF ACFT		A	B	C	D	FINAL APCH	DIST FAF - MAPt: 8.0						
OCA(H) STRAIGHT - IN	2.5%*	670 (655)			1500 (1485)	SPEED	KT	70	90	120	150	180	
	4.0%*	570 (555)			1070 (1055)		TIME	MIN:SEC	06:52	05:21	04:01	03:13	02:41
	5.0%*	500 (485)			790 (775)		ROD	FT/MIN	425	545	725	905	1085
CIRCLING		670 (645)	970 (945)	1350 (1325)	2050 (2025)								

NOTE: CIRCLING E OF AD ONLY. \* MNM MISSED APCH CLIMB GRADIENT

CHANGES: NEW PROCEDURE.