

INSTRUMENT APPROACH CHART - ICAO PLAN VIEW SCALE: 1:350 000

LAKSELV

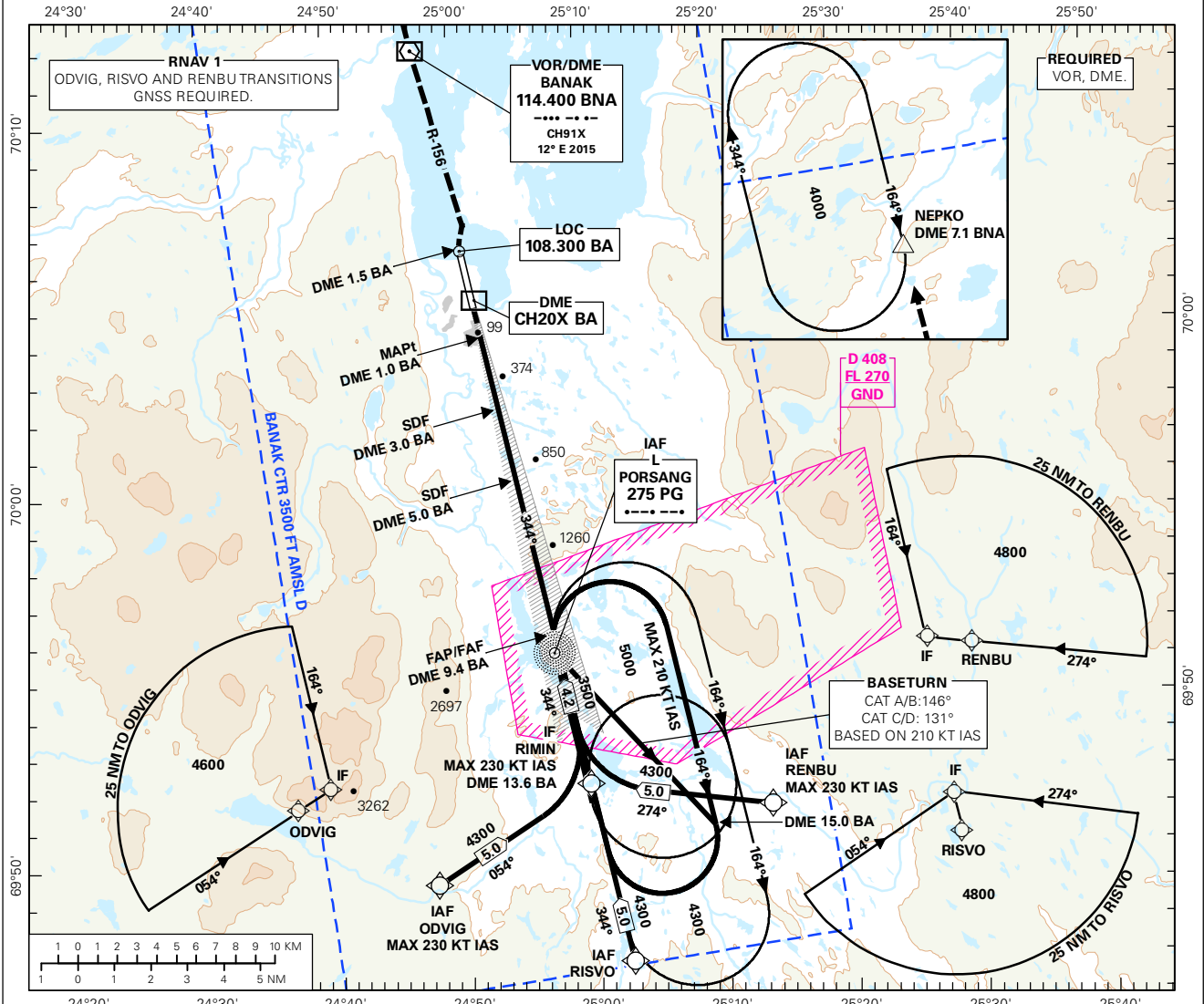
BANAK

ILS or LOC RWY 34

TRANSITION ALTITUDE

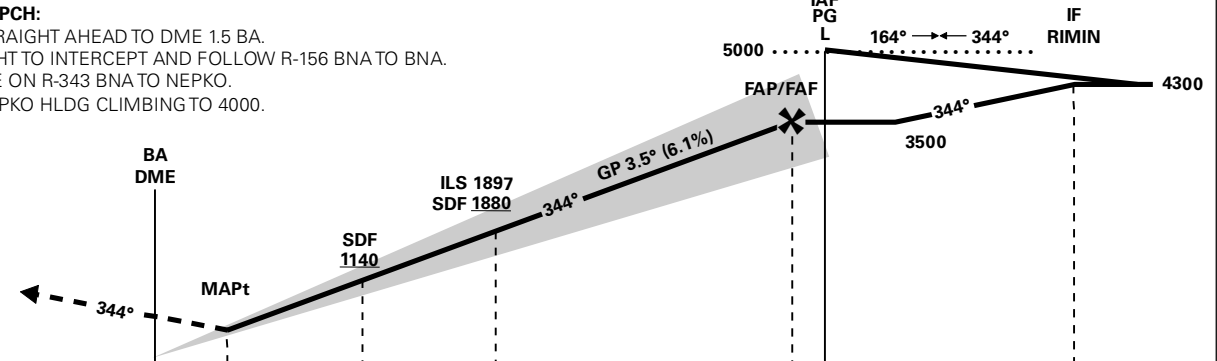
7000

<p>MSA 25 NM PG</p>	ATIS: 136.325	AD ELEV: 25	DIST IN NM
	TWR: 118.900 118.050 122.100	THR ELEV: 25	
CIRCLING HGT RELATED TO AD ELEV		BEARINGS ARE MAGNETIC - VAR 11.5 ° E (2015)	



DIST TO BA	9	8	7	6	5	4	3	2
ALT (HGT)	3370 (3345)	3000 (2975)	2620 (2595)	2250 (2225)	1880 (1855)	1510 (1485)	1140 (1115)	770 (745)

MISSED APCH:
 CLIMB STRAIGHT AHEAD TO DME 1.5 BA.
 TURN RIGHT TO INTERCEPT AND FOLLOW R-156 BNA TO BNA.
 CONTINUE ON R-343 BNA TO NEPKO.
 ENTER NEPKO HLDG CLIMBING TO 4000.



DME (BA)	0	1.0	3.0	5.0	9.4	13.6	
THR	0.8	2.8	4.8	9.2	13.5		
CAT OF ACFT	A	B	C	D	FINAL APCH		
OCA(H) STRAIGHT - IN	286 (261)	302 (277)	313 (288)	326 (301)	DIST FAF - MAPt: 8.4		
	670 (645)				SPEED	KT	70 90 120 150 180
CIRCLING	670 (645)	970 (945)	1350 (1325)	2050 (2025)	TIME	MIN:SEC	07:11 05:35 04:12 03:21 02:48
					ROD	FT/MIN	435 560 745 930 1120

NOTE: CIRCLING E OF AD ONLY.

CHANGES: EDITORIALS.