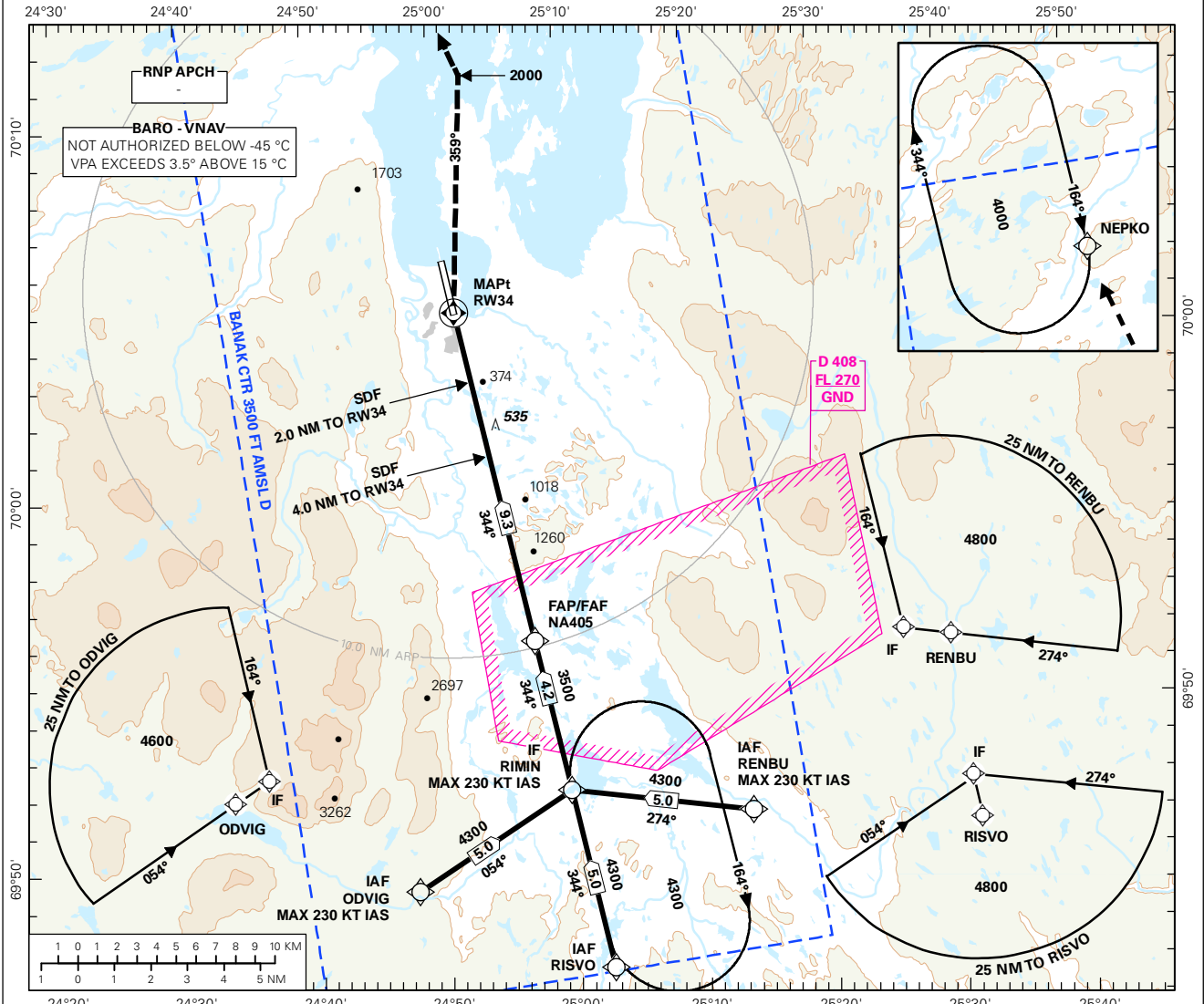


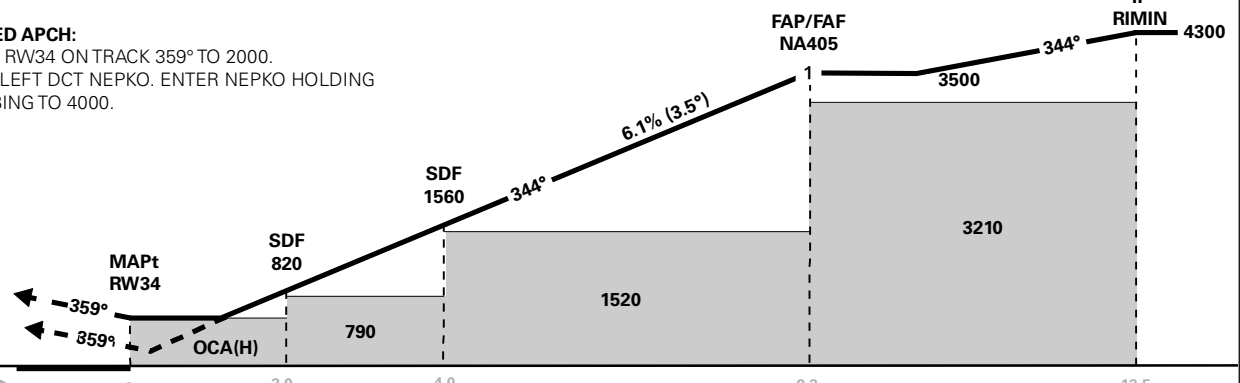
**INSTRUMENT APPROACH CHART - ICAO PLAN VIEW SCALE: 1:350 000**

ATIS: 136.325		AD ELEV: 25		LAKSELV	
TWR: 118.900 118.050		THR ELEV: 25		DIST IN NM	
		HGT RELATED TO THR RWY 34		ELEV, ALT AND HGT IN FT	
		CIRCLING HGT RELATED TO AD ELEV		TRANSITION ALTITUDE	
		BEARINGS ARE MAGNETIC - VAR 11.5° E (2015)		7000	
				<b>BANAK</b>	
				<b>RNAV(GNSS) RWY 34</b>	



DIST TO RW34	9	8	7	6	5	4	3	2
ALT (HGT)	3410 (3385)	3040 (3015)	2670 (2645)	2300 (2275)	1930 (1905)	1560 (1535)	1190 (1165)	820 (795)

**MISSED APCH:**  
 FROM RW34 ON TRACK 359° TO 2000.  
 TURN LEFT DCT NEPKO. ENTER NEPKO HOLDING  
 CLIMBING TO 4000.



OCA(H)	CAT OF ACFT	A	B	C	D	FINAL APCH	DIST FAF - MAPt: 9.3					
	LNNAV/VNAV 2.5%	560 (535)	580 (555)	590 (565)	600 (575)		SPEED	KT	70	90	120	150
STRAIGHT - IN	LNNAV 2.5%	650 (625)				TIME	MIN:SEC	07:56	06:10	04:38	03:42	03:05
	CIRCLING	670 (645)	970 (945)	1350 (1325)	2050 (2025)		ROD	FT/MIN	430	555	740	925

NOTE: CIRCLING E OF AD ONLY.

CHANGES: NEW PROCEDURE.

**RECOMMENDED RNAV PROCEDURE CODING**

<b>ENNA RNAV(GNSS) RWY 34</b>										
Serial Number	Path Descriptor	Waypoint Identifier	Fly-over	Course °M(°T)	MAG VAR	DIST (NM)	Turn Dir	ALT (FT)	Speed (KT)	VPA/TCH
01	IF	RENBU	-	-	-	-	-	A4600+	K230-	-
02	TF	RIMIN	-	274(285.6)	-	5.0	-	A4300+	K230-	-
01	IF	ODVIG	-	-	-	-	-	A4800+	K230-	-
02	TF	RIMIN	-	054(065.2)	-	5.0	-	A4300+	K230-	-
01	IF	RISVO	-	-	-	-	-	A4800+	-	-
02	TF	RIMIN	-	344(355.4)	-	5.0	-	A4300+	K230-	-
03	TF	NA405	-	344(355.5)	-	4.2	-	A3500+	-	-
04	TF	RW34	Y	344(355.5)	-	9.3	-	-	-	-
05	FA	-	-	359(010.4)	-	-	-	A2000	-	-
06	DF	NEPKO	-	-	-	-	L	-	-	-
07	HM	NEPKO	-	164(175.4)-	-	1 MIN	R	A4000	-	-

Note: Recommended RNAV procedure coding is based on ARINC 424-15 and is provided solely to indicate which procedure design protection areas were used in the Instrument Flight Procedure Design process.

Note: Published OCA(H) values are obstacle clearance values. Decision heights (DH) below 250 FT shall not be used due to APV approach operation Type A limitations.

Note: RIMIN holding not included in standard APCH transitions.