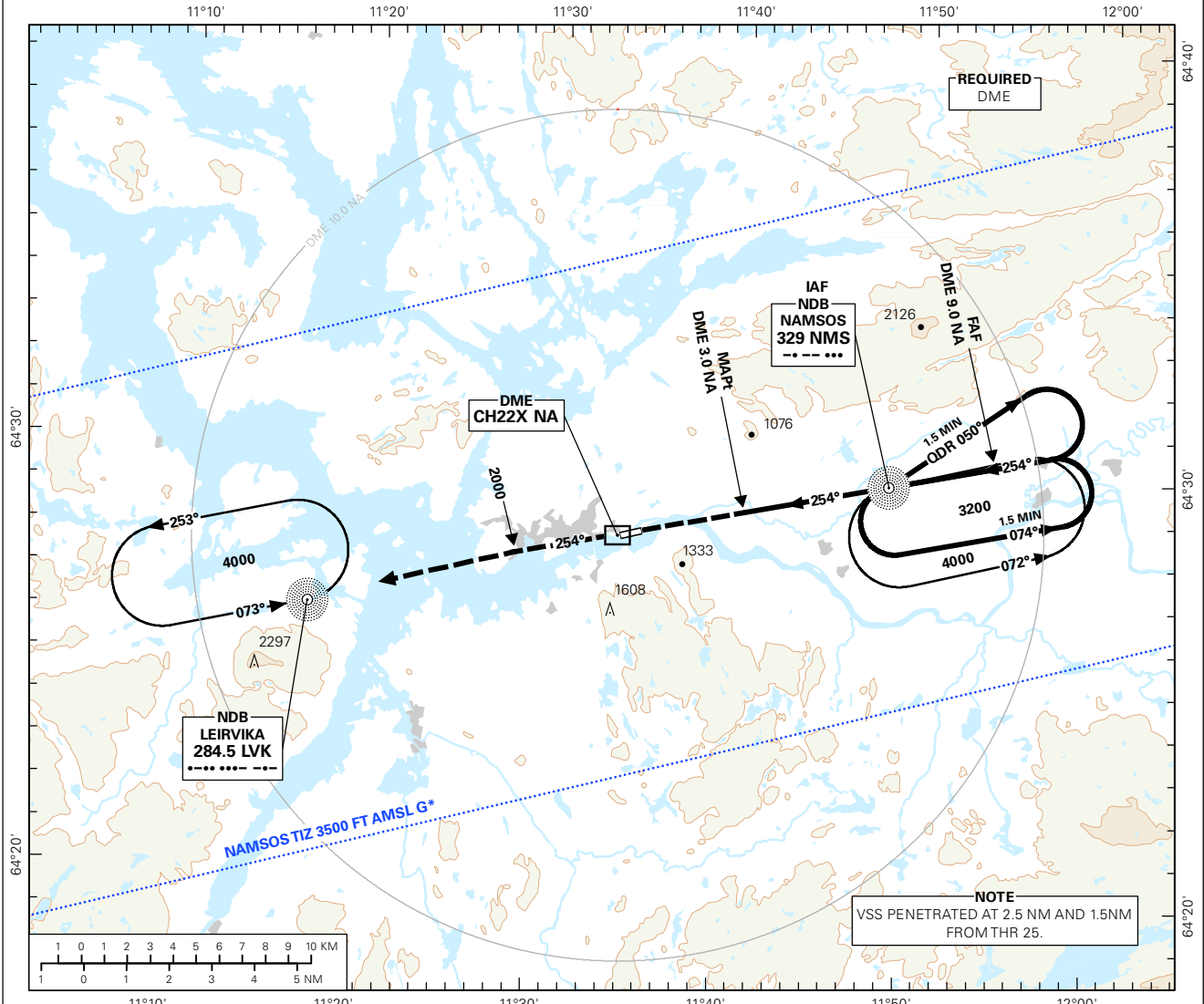


**INSTRUMENT APPROACH CHART - ICAO PLAN VIEW SCALE: 1:300 000**

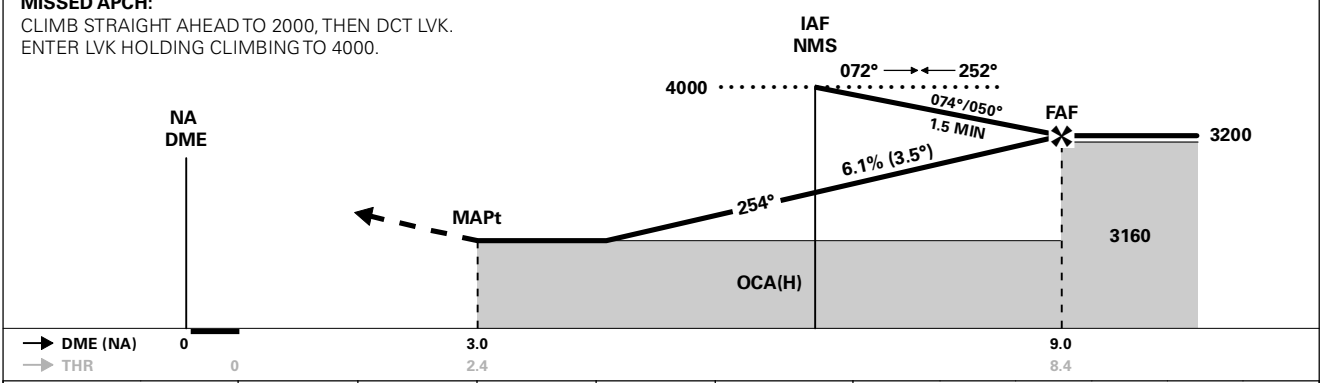
<p>MSA 25 NM NMS</p>	APP: 118.550	AD ELEV: 8			<p>NAMSOS <b>NAMSOS</b> <b>NDB RWY 25</b></p>
	AFIS: 119.900	THR ELEV: 8	DIST IN NM		
	VDF: 119.900	HGT RELATED TO THR RWY 25	ELEV, ALT AND HGT IN FT		<p>TRANSITION ALTITUDE 7000</p>
	CIRCLING HGT RELATED TO AD ELEV		BEARINGS ARE MAGNETIC - VAR 3.2 ° E (2015)		



DIST TO NA	12	11	10	9	8	7	6	5
ALT (HGT)	-	-	-	3200 (3192)	2830 (2822)	2460 (2452)	2090 (2082)	1720 (1712)

PROCEDURE OFFSET 3°

**MISSED APCH:**  
CLIMB STRAIGHT AHEAD TO 2000, THEN DCT LVK.  
ENTER LVK HOLDING CLIMBING TO 4000.



CAT OF ACFT	A	B	C	D	FINAL APCH	DIST FAF - MAPt: 6.0					
						SPEED	TIME	ROD	FT/MIN	KT	MIN:SEC
STRAIGHT - IN	2.5%*	1430 (1422)	1460 (1452)	-	-	70	05:09	435	90	04:00	560
	4.0%*	1360 (1352)	1400 (1392)	-	-	100	03:36	620	120	03:00	745
CIRCLING	5.0%*	1320 (1312)	1360 (1352)	-	-	130	03:00	810	150	02:47	810
		1430 (1422)	1460 (1452)	-	-						

NOTE: CIRCLING N OF AD ONLY. \*MNM MISSED APCH CLIMB GRADIENT.

CHANGES: NEW PROCEDURE.

THIS PAGE INTENTIONALLY LEFT BLANK