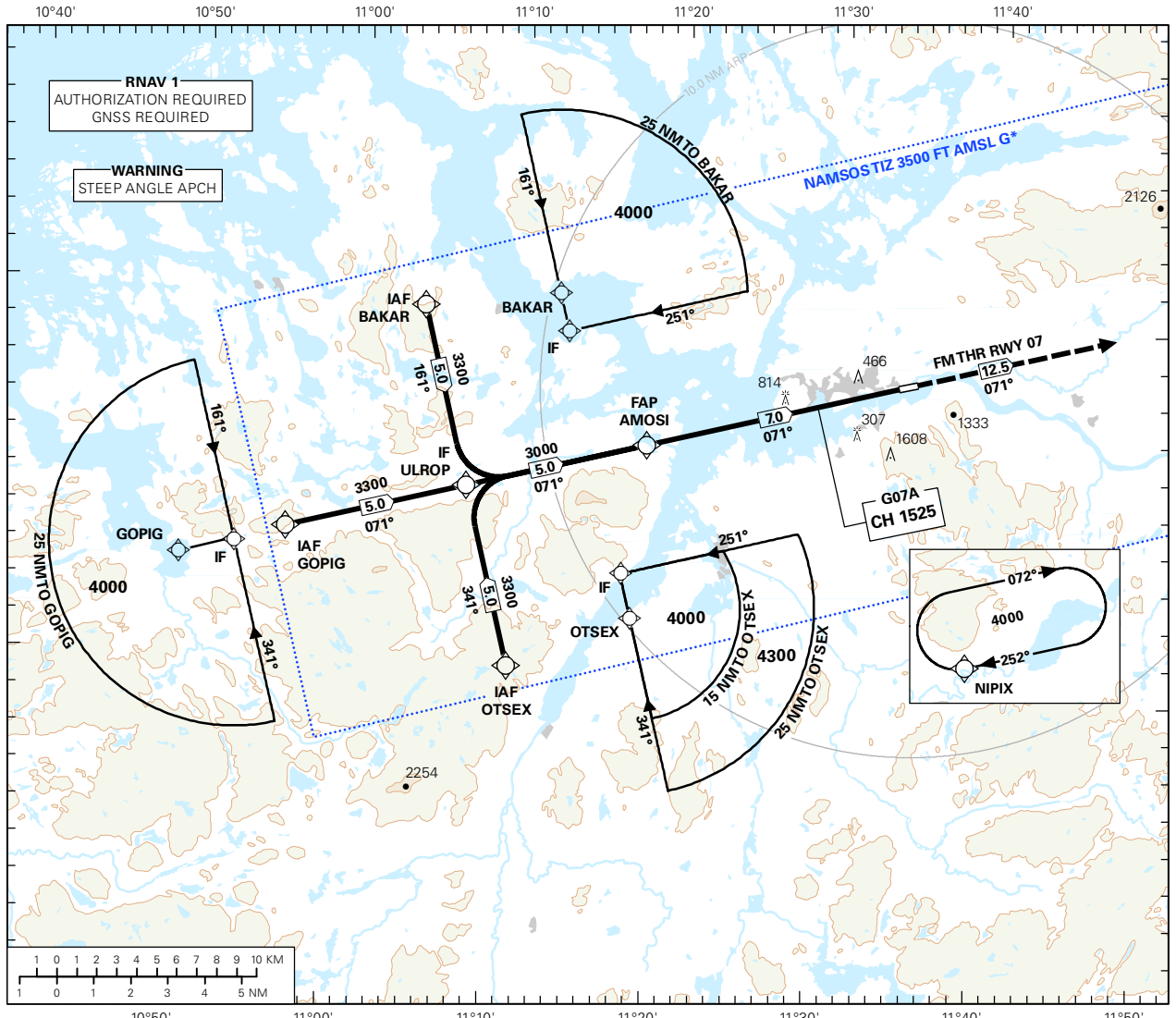
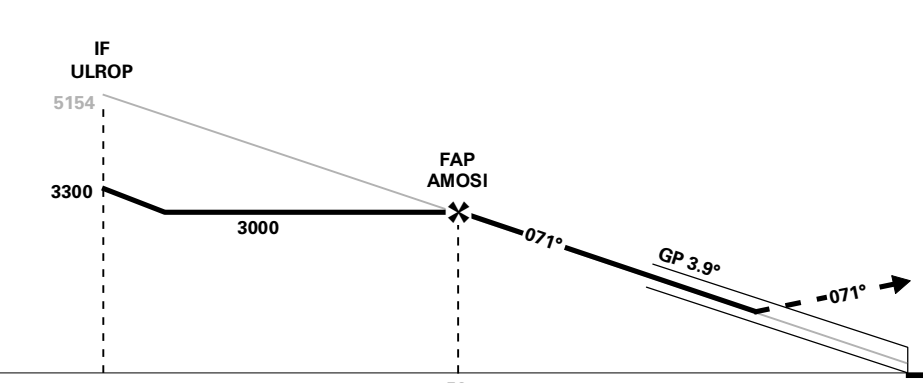


INSTRUMENT APPROACH CHART - ICAO PLAN VIEW SCALE: 1:350 000

APP: 118.550	AD ELEV: 8			NAMSOS NAMSOS GLS RWY 07 TRANSITION ALTITUDE 7000
AFIS: 119.900	THR ELEV: 7	DIST IN NM		
VDF: 119.900	HGT RELATED TO THR RWY 07	ELEV, ALT AND HGT IN FT		
CIRCLING HGT RELATED TO AD ELEV				
BEARINGS ARE MAGNETIC - VAR 3.2 ° E (2015)				



DIST TO THR	10	9	8	7	6	5	4	3
ALT (HGT)	-	-	-	-	2573 (2566)	2149 (2142)	1727 (1720)	1307 (1300)



MISSED APCH:
CLIMB ONTRACK 071° TO NIPIX. ENTER NIPIX HOLDING CLIMBING TO 4000.

NOTE:
GP ANGLE (3.9°) NOT CONSISTENT WITH PLASI ANGLE (4.5°)

CAT OF ACFT	A	B	C	D	FINAL APCH	SPEED	KT	70	90	100	120	130
	2.5%*	3.0%*	4.0%*	5.0%*								
OCA(H)	1051 (1043)	1070 (1063)	-	-	TIME	MIN:SEC	-	-	-	-	-	-
SCAT - I	983 (976)	1003 (995)	-	-			ROD	FT/MIN	480	620	690	830
CIRCLING	1250 (1242)	1350 (1342)	-	-								

NOTE: CIRCLING N OF AD ONLY. *MNM MISSED APCH CLIMB GRADIENT.

CHANGES: MAGNETIC VARIATION, OCA(H) VALUES, EDITORIALS.

SCAT-I: Special CAT-I, REF AIP Norge, GEN 1.5 and AD 1.1 paragraf 6.3

Det kreves spesiell godkjenning fra Luftfartstilsynet for å kunne bruke SCAT-I prosedyrer operativt.

Beslutningshøyder (DH) under 400 FT skal ikke brukes.

GLS VHF-data sendes på FREQ 116.600 MHZ

Under planlegging av en GLS presisjonsinnflyging skal piloter kontrollere at prosedyren vil være tilgjengelig. Mangel på GPS-signal og feil ved bakkestasjonen vil bli publisert ved bruk av NOTAM. Tekst som benyttes ved varslet mangelfull GNSS-dekning vil være "SCAT-I GPS OUTAGE PREDICTED".

Meldepunkt-kordinater er publisert i ENR 4.4

SCAT-I: Special CAT-I, REF AIP Norway, GEN 1.5 and AD 1.1 paragraph 6.3

Special authorization from the Norwegian Civil Aviation Authority is required prior to operational use of SCAT-I procedures.

Decision heights (DH) below 400 FT shall not be used.

GLS VHF data is transmitted on FREQ 116.600 MHZ.

When planning a GLS precision approach pilots shall check the availability of the instrument approach procedure. Predicted GPS outages and ground station irregularities will be published using NOTAM. Text used when insufficient GNSS coverage has been predicted will be "SCAT-I GPS OUTAGE PREDICTED".

Waypoint coordinates are published in ENR 4.4