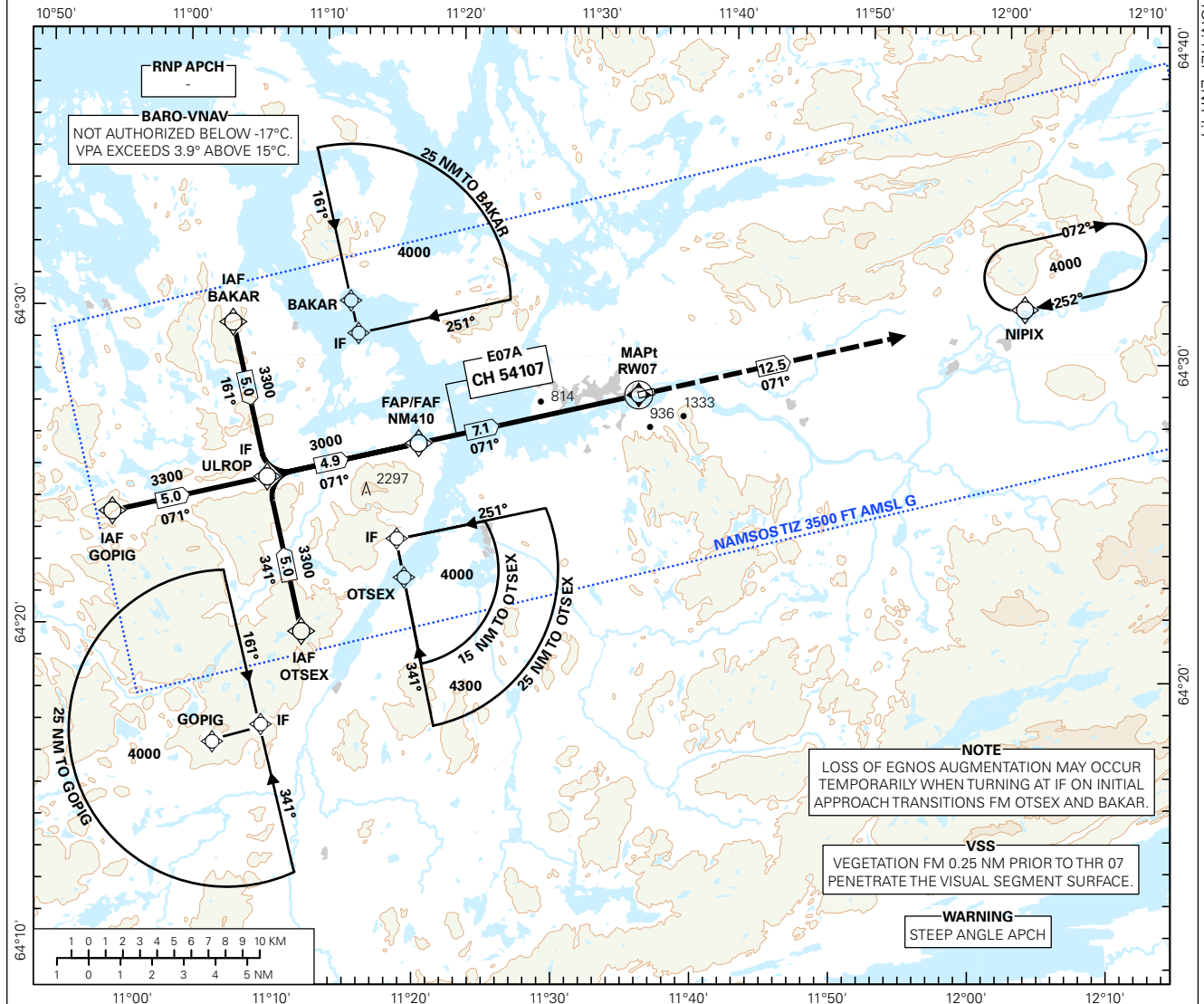


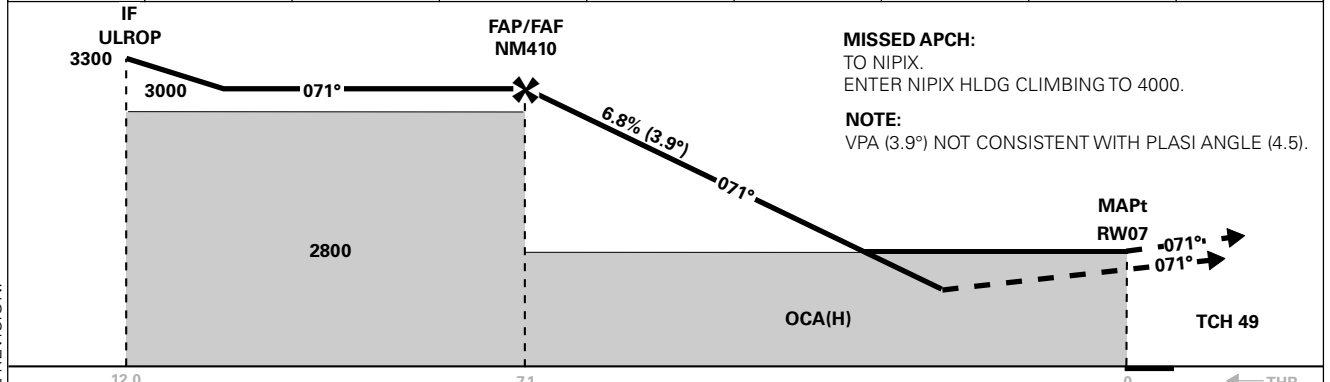
**INSTRUMENT APPROACH CHART - ICAO PLAN VIEW SCALE: 1:400 000**

APP: 118.550	AD ELEV: 8		
AFIS: 119.900	THR ELEV: 7	DIST IN NM	
VDF: 119.900	HGT RELATED TO THR RWY 07	ELEV, ALT AND HGT IN FT	
CIRCLING HGT RELATED TO AD ELEV		TRANSITION ALTITUDE	
BEARINGS ARE MAGNETIC - VAR 3.2 ° E (2015)		7000	

NAMSOS  
**NAMSOS**  
**RNAV(GNSS) RWY 07**  
 TRANSITION ALTITUDE  
**7000**



DIST TO RW07	9	8	7	6	5	4	3	2
ALT (HGT)	-	-	2960 (2953)	2550 (2543)	2130 (2123)	1720 (1713)	1300 (1293)	890 (883)



**MISSED APCH:**  
 TO NIPIX.  
 ENTER NIPIX HLDG CLIMBING TO 4000.  
**NOTE:**  
 VPA (3.9°) NOT CONSISTENT WITH PLASI ANGLE (4.5).

CAT OF ACFT		A				B				C				D				FINAL APCH	DIST FAF - MAPt : 7.1
		1000	1000	1000	1000	1000	1000	1000	1000	1000	1000	1000	1000	1000	1000	1000	1000		
OCA(H) STRAIGHT - IN	LPV 2.5%*	1080 (1073)	1090 (1083)	-	-	-	-	-	-	-	-	-	-	-	-	-	-		
	LPV 4.0%*	880 (873)	900 (893)	-	-	-	-	-	-	-	-	-	-	-	-	-	-		
	LPV 5.0%*	770 (763)	790 (783)	-	-	-	-	-	-	-	-	-	-	-	-	-	-		
	LNAV/VNAV 2.5%*	1040 (1033)	1060 (1053)	-	-	-	-	-	-	-	-	-	-	-	-	-	-		
CIRCLING	LNAV/VNAV 4.0%*	880 (873)	890 (883)	-	-	-	-	-	-	-	-	-	-	-	-	-	-		
	LNAV/VNAV 5.0%*	830 (823)	850 (843)	-	-	-	-	-	-	-	-	-	-	-	-	-	-		
	LNAV 2.5%*	1370 (1363)	1400 (1393)	-	-	-	-	-	-	-	-	-	-	-	-	-	-		
	LNAV 5.0%*	1300 (1293)	1350 (1343)	-	-	-	-	-	-	-	-	-	-	-	-	-	-		
		1370 (1362)	1400 (1392)	-	-	-	-	-	-	-	-	-	-	-	-	-	-		

NOTE: CIRCLING N OF AD ONLY. \*MNM MISSED APCH CLIMB GRADIENT.

CHANGES: COMPLETE REVISION.

## RECOMMENDED RNAV PROCEDURE CODING

ENNM RNAV(GNSS) RWY 07										
Serial Number	Path Descriptor	Waypoint Identifier	Fly-over	Course °M(°T)	MAG VAR	DIST (NM)	Turn Dir	ALT (FT)	Speed (KT)	VPA/TCH (M)
010	IF	BAKAR	-	-	-	-	-	A4000+	-	-
020	TF	ULROP	-	-	-	5.0	-	A3300+	-	-
010	IF	OTSEX	-	-	-	-	-	A4000+	-	-
020	TF	ULROP	-	-	-	5.0	-	A3300+	-	-
010	IF	GOPIG	-	-	-	-	-	A4000+	-	-
020	TF	ULROP	-	-	-	5.0	-	A3300+	-	-
030	TF	NM410	-	-	-	4.9	-	A3000+	-	-
040	TF	RW07	Y	-	-	7.1	-	-	-	-3.9/15
050	TF	NIPIX	-	-	-	12.5	-	-	-	-
060	HM	NIPIX	-	252(255.1)	-	1 MIN	R	A4000+	-	-

Note: Recommended RNAV procedure coding is based on ARINC 424-15 and is provided solely to indicate which procedure design protection areas were used in the Instrument Flight Procedure Design process.

Note: The use of SBAS/GNSS geometric altitude as a source of altitude for approaches to LNAV/VNAV minima is permitted only for aircraft specifically certified for this type of operation. See "EASA-CM-AS-002 Clarifications to AMC 20-27" for additional information.

Note: Published OCA(H) values are obstacle clearance values. Decision heights (DH) below 200 FT shall not be used due to APV approach operation Type B limitations.

## FAS DATA BLOCK

Operation type	0	LTP/FTP ellipsoidal height	40.1
SBAS Provider	1	FPAP latitude	642830.4945N
Airport Identifier	ENNM	FPAP longitude	0113610.1080E
Runway	RW07	Threshold crossing height	15
Approach performance designator	0	TCH units	M
Route Indicator	-	Glide path angle	3.9
Reference path data selector	0	Course width at threshold	105
Reference path Identifier	E07A	Length offset	776
LTP/FTP latitude	642815.9195N	Horizontal alert limit (HAL)	40
LTP/FTP longitude	0113407.8345E	Vertical alert limit (VAL)	35
		PRECISION APPROACH PATH CRC REMAINDER	97011F28

## NON FAS DATA BLOCK FIELDS

LTP Ortometric Height	2.2
FPAP Ortometric Height	2.2