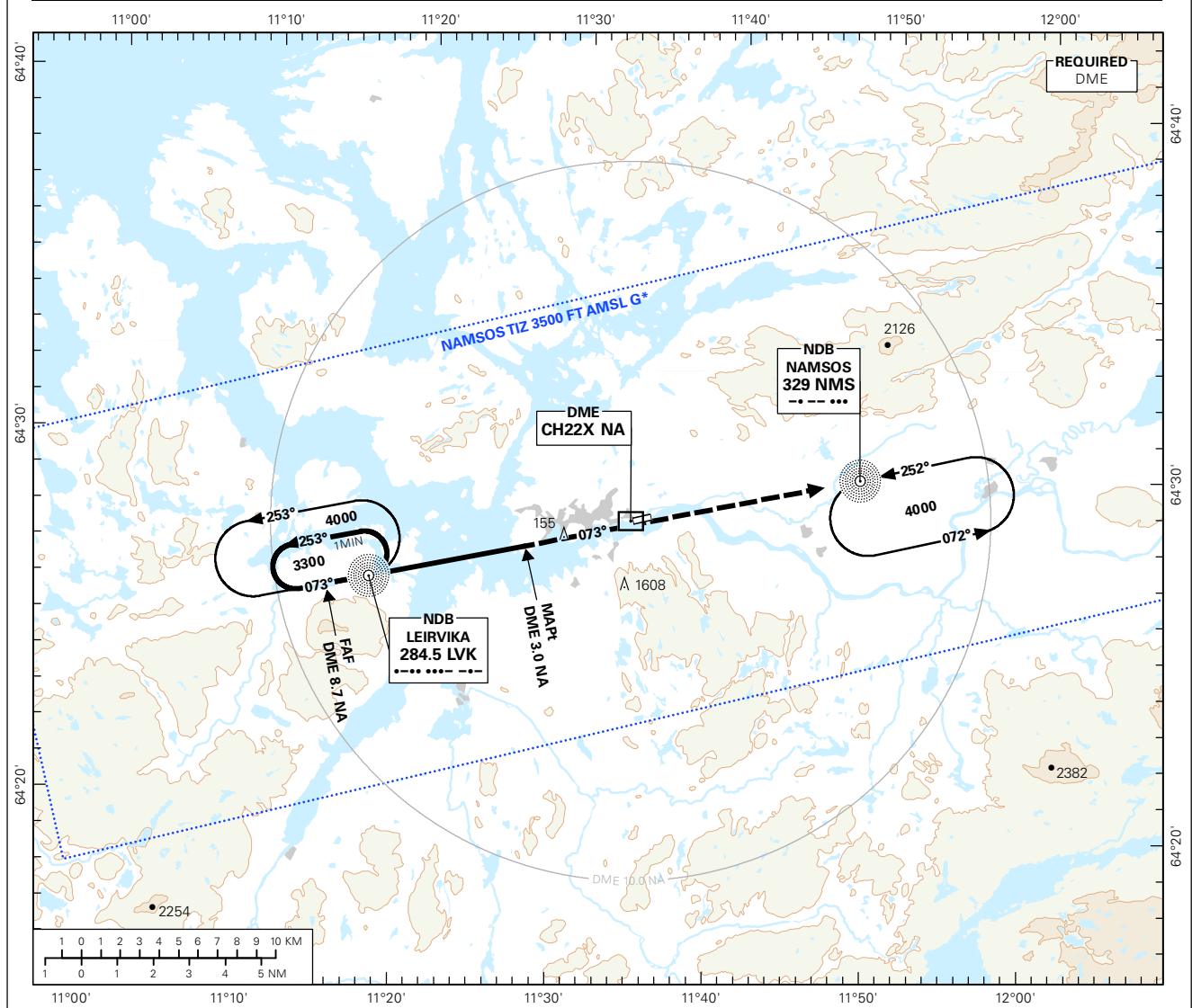


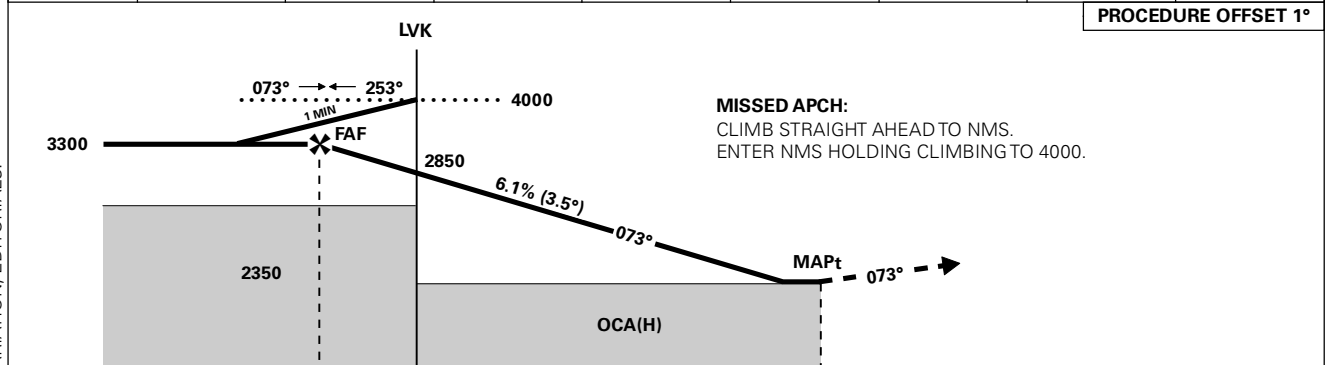
INSTRUMENT APPROACH CHART - ICAO PLAN VIEW SCALE: 1:350 000

<p>MSA 25 NM LVK</p>	APP: 118.550	AD ELEV: 8	DIST IN NM	
	AFIS: 119.900	THR ELEV: 7		ELEV, ALT AND HGT IN FT
	VDF: 119.900	CIRCLING HGT RELATED TO AD ELEV		TRANSITION ALTITUDE 7000
	BEARINGS ARE MAGNETIC - VAR 3.2 ° E (2015)			

NAMSOS
NAMSOS
NDB RWY 07



DIST TO NA	11	10	9	8	7	6	5	4
ALT (HGT)	-	-	-	3060 (3053)	2690 (2683)	2320 (2313)	1950 (1943)	1580 (1573)



CAT OF ACFT		A	B	C	D	FINAL APCH	DIST FAF - MAPt: 5.7					
OCA(H) STRAIGHT - IN	2.5%*	1440 (1433)	1460 (1453)	-	-	SPEED	KT	70	90	100	120	130
	4.0%*	1290 (1283)	1330 (1323)	-	-	TIME	MIN:SEC	4:51	3:47	3:24	2:50	2:37
CIRCLING	5.0%*	1190 (1183)	1230 (1223)	-	-	ROD	FT/MIN	435	560	620	745	805
		1440 (1433)	1460 (1453)	-	-	NOTE: CIRCLING N OF AD ONLY. *MNM MISSED APCH CLIMB GRADIENT.						

CHANGES: MAGNETIC VARIATION, EDITORIALS.

THIS PAGE INTENTIONALLY LEFT BLANK