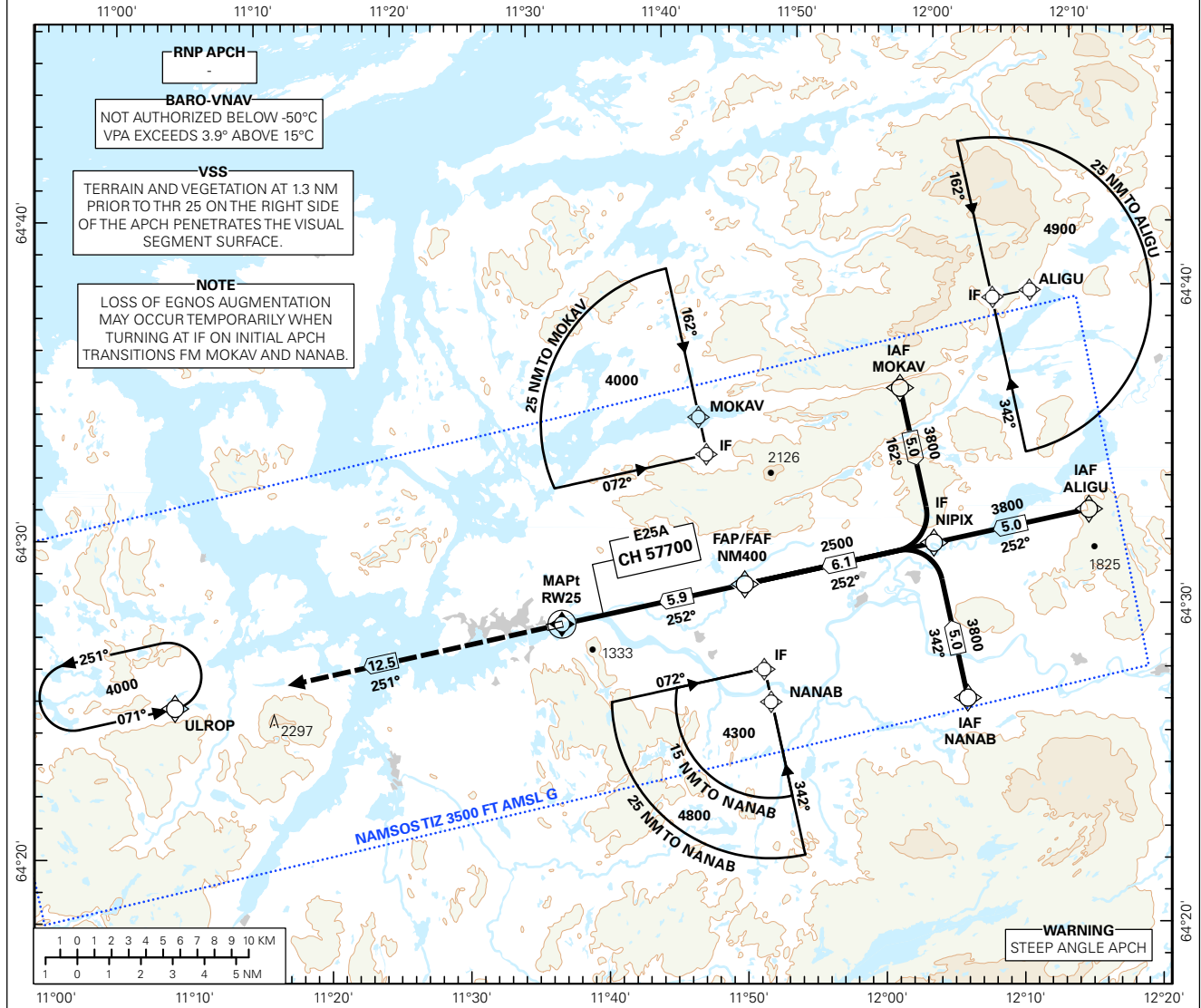
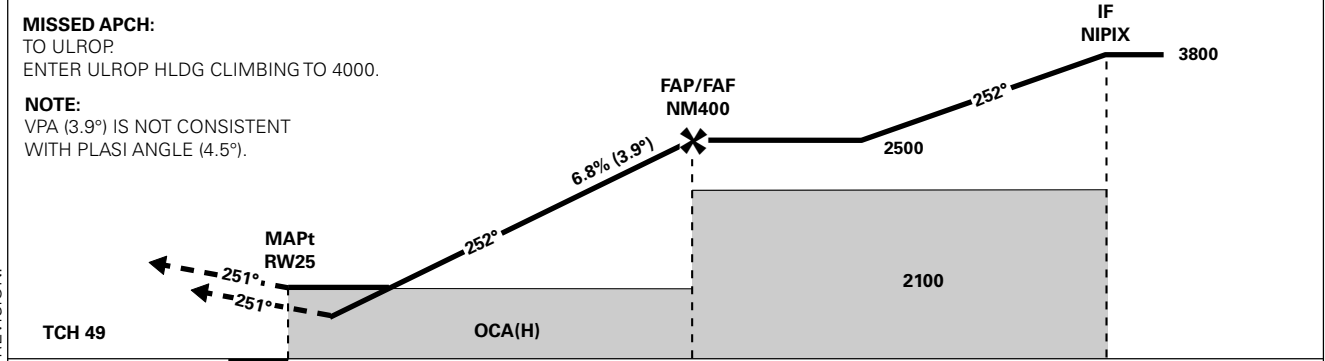


INSTRUMENT APPROACH CHART - ICAO PLAN VIEW SCALE: 1:400 000

APP: 118.550	AD ELEV: 8			NAMSOS NAMSOS RNAV(GNSS) RWY 25 TRANSITION ALTITUDE 7000
AFIS: 119.900	THR ELEV: 8	DIST IN NM		
VDF: 119.900	HGT RELATED TO THR RWY 25	ELEV, ALT AND HGT IN FT		
CIRCLING HGT RELATED TO AD ELEV				
BEARINGS ARE MAGNETIC - VAR 3.2° E (2015)				



DIST TO RW25	10	9	8	7	6	5	4	3
ALT (HGT)	-	-	-	-	-	2130 (2122)	1720 (1712)	1300 (1292)



CAT OF ACFT		A	B	C	D	FINAL APCH	DIST FAF - MAPt : 5.9					
OCA(H) STRAIGHT - IN	LPV 2.5%*	1160 (1152)	1180 (1172)	-	-	SPEED	KT	70	90	100	120	130
	LPV 4.0%*	1060 (1052)	1080 (1072)	-	-							
	LPV 5.0%*	1020 (1012)	1040 (1032)	-	-							
	LNAV/VNAV 2.5%*	1290 (1282)	1310 (1302)	-	-							
CIRCLING	LNAV/VNAV 4.0%*	1210 (1202)	1230 (1222)	-	-	TIME	MIN:SEC	05:04	03:56	03:33	02:57	02:44
	LNAV/VNAV 5.0%*	1170 (1162)	1190 (1182)	-	-	ROD	FT/MIN	485	620	690	830	900

NOTE: CIRCLING N OF AD ONLY. *MNM MISSED APCH CLIMB GRADIENT.

CHANGES: COMPLETE REVISION.

RECOMMENDED RNAV PROCEDURE CODING

ENNM RNAV(GNSS) RWY 25										
Serial Number	Path Descriptor	Waypoint Identifier	Fly-over	Course °M(°T)	MAG VAR	DIST (NM)	Turn Dir	ALT (FT)	Speed (KT)	VPA/TCH
010	IF	MOKAV	-	-	-	-	-	A4000+		
020	TF	NIPIX	-	-	-	5.0	-	A3800+		
010	IF	NANAB	-	-	-	-	-	A4300+		
020	TF	NIPIX	-	-	-	5.0	-	A3800+		
010	IF	ALIGU	-	-	-	-	-	A4900+		
020	TF	NIPIX	-	-	-	5.0	-	A3800+		
030	TF	NM400	-	-	-	6.1	-	A2500+		
040	TF	RW25	Y	-	-	5.9	-	-		-3.9/15
050	TF	ULROP	-	-	-	12.5	-	A4000		
060	HM	ULROP	-	071(074.5)	-	1 MIN	L	A4000+		

Note: Recommended RNAV procedure coding is based on ARINC 424-15 and is provided solely to indicate which procedure design protection areas were used in the Instrument Flight Procedure Design process.

Note: The use of SBAS/GNSS geometric altitude as a source of altitude for approaches to LNAV/VNAV minima is permitted only for aircraft specifically certified for this type of operation. See "EASA-CM-AS-002 Clarifications to AMC 20-27" for additional information.

Note: Published OCA(H) values are obstacle clearance values. Decision heights (DH) below 200 FT shall not be used due to APV approach operation Type B limitations.

FAS DATA BLOCK

Operation type	0	LTP/FTP ellipsoidal height	40.2
SBAS Provider	1	FPAP latitude	642808.9660N
Airport Identifier	ENNM	FPAP longitude	0113309.6095E
Runway	RW25	Threshold crossing height	15
Approach performance designator	0	TCH units	M
Route Indicator	-	Glide path angle	3.9
Reference path data selector	0	Course width at threshold	105
Reference path Identifier	E25A	Length offset	800
LTP/FTP latitude	642823.5555N	Horizontal alert limit (HAL)	40
LTP/FTP longitude	0113511.8645E	Vertical alert limit (VAL)	35
		PRECISION APPROACH PATH CRC REMAINDER	975F9B78

NON FAS DATA BLOCK FIELDS

LTP Ortometric Height	2.3
FPAP Ortometric Height	2.3