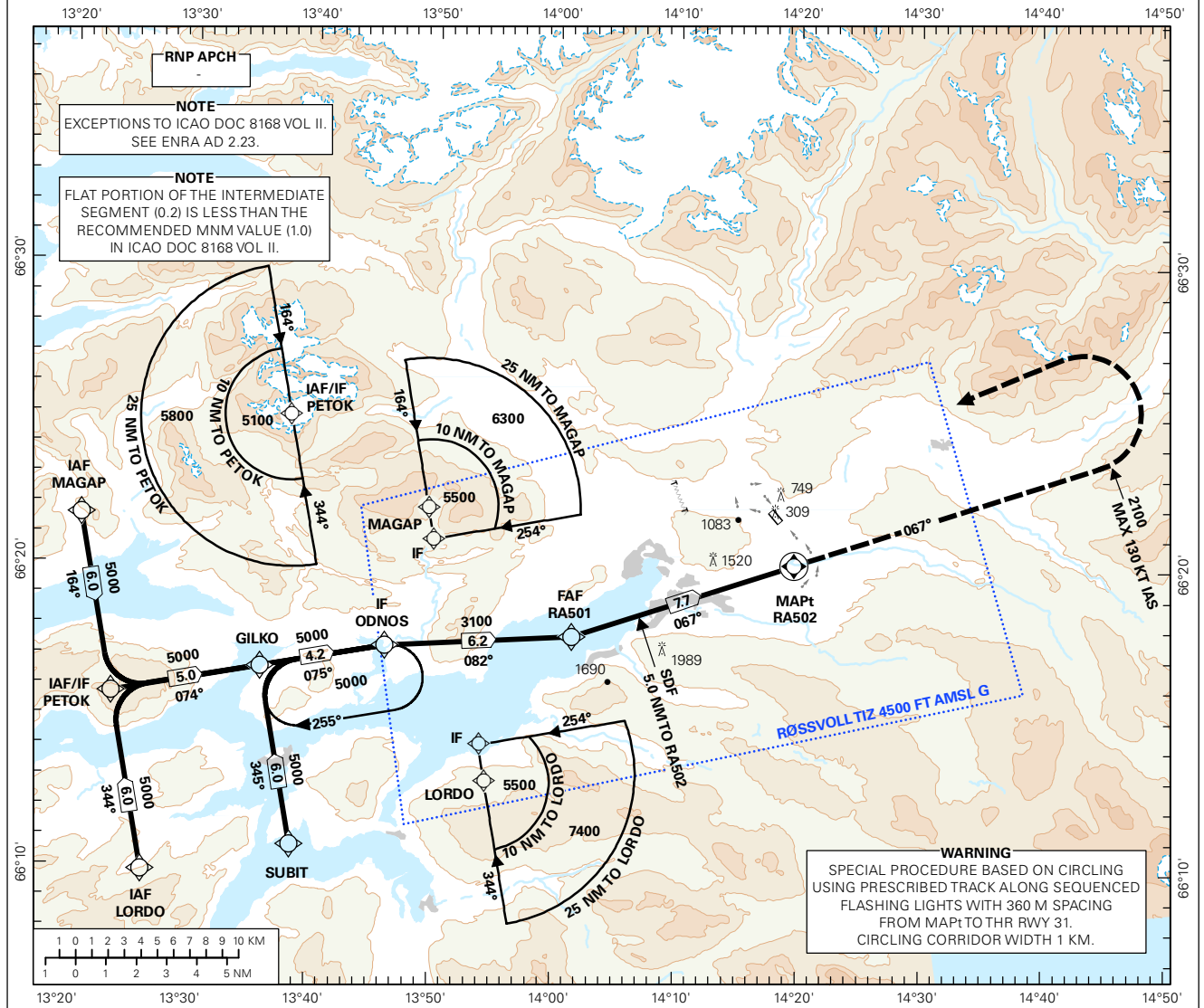


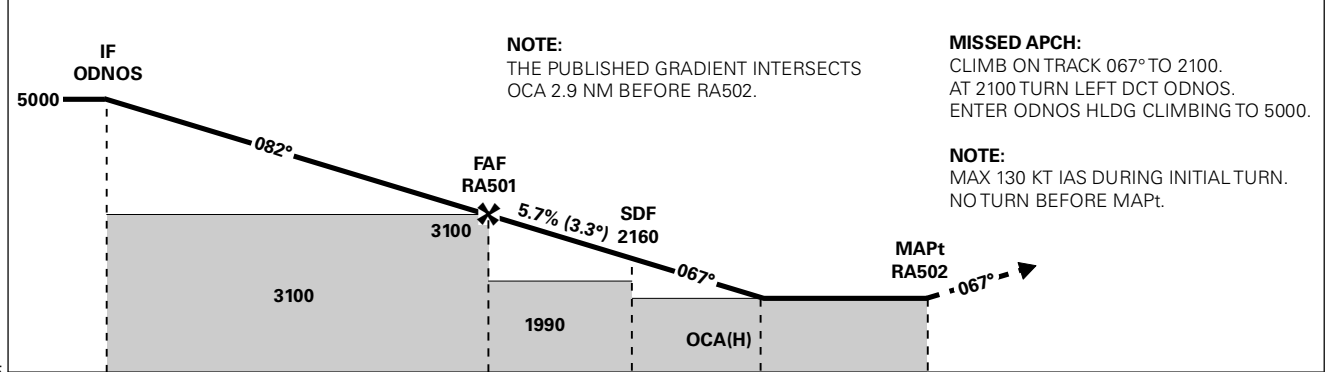
INSTRUMENT APPROACH CHART - ICAO PLAN VIEW SCALE: 1:420 000

ATIS: 124.750	AD ELEV: 230	
APP: 127.900		DIST IN NM
AFIS: 119.950		ELEV, ALT AND HGT IN FT
VDF: 119.950	CIRCLING HGT RELATED TO AD ELEV	TRANSITION ALTITUDE
	BEARINGS ARE MAGNETIC - VAR 5 ° E (2015)	7000

MO I RANA
RØSSVOLL
RNAV(GNSS)-A



DIST TO RA502	10	9	8	7	6	5	4	3
ALT (HGT)	-	-	-	2850 (2621)	2510 (2281)	2160 (1931)	1820 (1591)	1470 (1241)



CAT OF ACFT		A	B	C	D
OCA(H) STRAIGHT - IN		-	-	-	-
CIRCLING	2.5%*	1510 (1281)	1530 (1301)	-	-
	3.0%*	1440 (1211)	1460 (1231)	-	-
	3.5%*	1430 (1201)		-	-

NOTE: CIRCLING USING PRESCRIBED TRACK ALONG SEQUENCED FLASHING LIGHTS. CGL LGT: 15 LIH/6LIL. *MNM MISSED APCH CLIMB GRADIENT.

CHANGES: EDITORIALS.

RECOMMENDED RNAV PROCEDURE CODING

ENRA RNAV(GNSS) - A										
Serial Number	Path Descriptor	Waypoint Identifier	Fly-over	Course °M(°T)	MAG VAR	DIST (NM)	Turn Dir	ALT (FT)	Speed (KT)	VPA/TCH
010	IF	MAGAP	-	-	-	-	-	A5000+	-	-
020	TF	PETOK	-	-	-	6.0	-	A5000+	-	-
010	IF	LORDO	-	-	-	-	-	A5000+	-	-
020	TF	PETOK	-	-	-	6.0	-	A5000+	-	-
010	IF	PETOK	-	-	-	-	-	A5000+	-	-
020	TF	ODNOS	-	-	-	9.2	-	A5000+	-	-
010	IF	SUBIT	-	-	-	-	-	A5000+	-	-
020	TF	GILKO	-	-	-	6.0	-	A5000+	-	-
030	TF	ODNOS	-	-	-	4.2	-	A5000+	-	-
040	TF	RA501	-	-	-	6.2	-	A3100+	-	-
050	TF	RA502	Y	-	-	7.7	-	-	-	-
060	CA	-	-	067 (071.8)	-	-	-	A2100	-	-
070	DF	ODNOS	-	-	-	-	L	A5000	-	-
080	HM	ODNOS	-	075 (079.6)	-	1 MIN	R	A5000+	-	-

Note: Recommended RNAV procedure coding is based on ARINC 424-15 and is provided solely to indicate which procedure design protection areas were used in the Instrument Flight Procedure Design process.