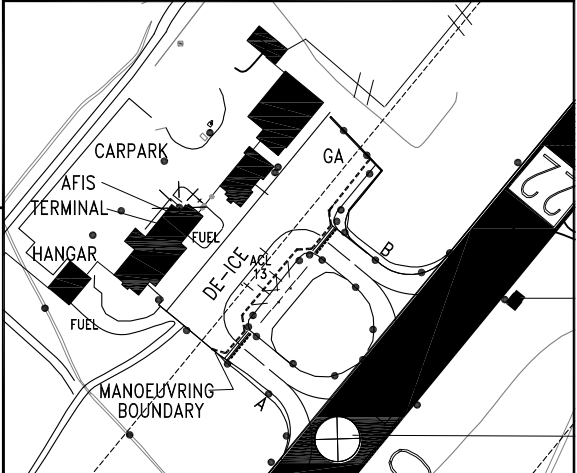
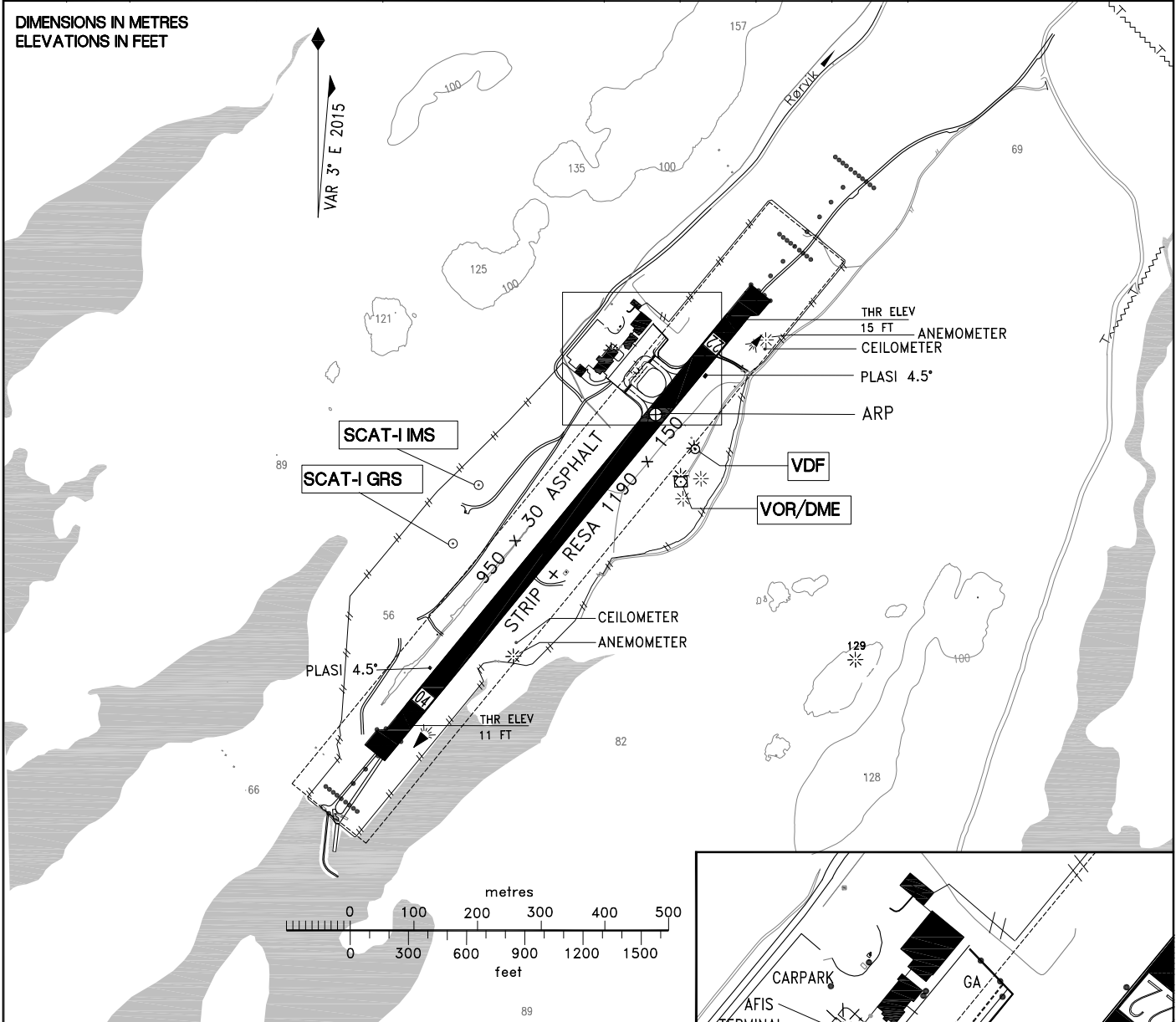
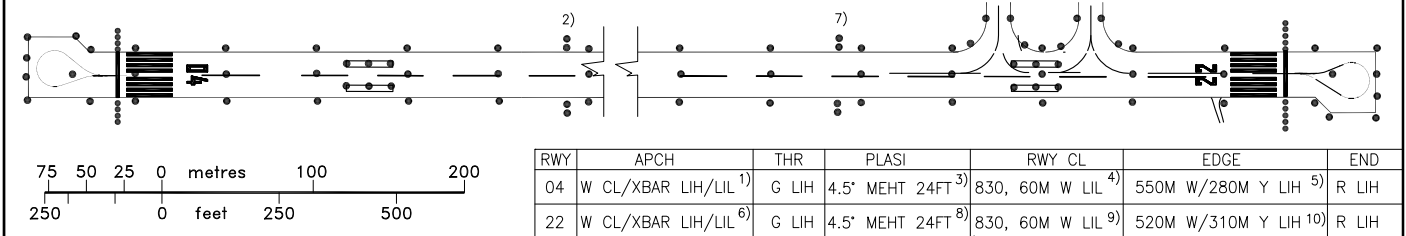


AERODROME CHART		64°50'18"N 011°08'46"E WGS 84		AD ELEV 15 FT	AFIS 119.800 MHZ			RØRVIK RYUM NORWAY	
RWY	BRG (GEO)	THRESHOLD		BEARING STRENGTH	DECLARED DISTANCES				TWY AND APRON TAXIWAYS 15 M WIDE APRON ELEV 13 FT PCN-15/F/D/Y/U
					TORA	ASDA	TODA	LDA	
04	041.32°	645002.85N	0110813.62 E	PCN - 15/F/D/Y/U	890	890	890	830	
22	221.33°	645022.98N	0110855.20 E	PCN - 15/F/D/Y/U	890	890	890	830	



- NOTES-REMARKS**
- 1) RWY 04: XBAR AT 150M FM THR. TWO INNERMOST LGT FLUSH WITH SURFACE. FLASHING W LGT 180M FM THR(30M FM XBAR)
 - 2) BALKED GUIDANCE LDG LGT 295 M FM THR.
 - 3) SCREEN HEIGHT 41FT.
 - 4) FIRST LGT 10M FM THR.
 - 5) FIRST LGT 10M FM THR.
 - 6) RWY 22: XBAR AT 150M AND 300M FM THR. TWO INNERMOST LGT FLUSH WITH SURFACE. FLASHING W LGT AT CENTRE OF XBAR 300M FM THR.
 - 7) BALKED GUIDANCE LDG LGT 295 M FM THR. SEQUENCED FLG W LGT IN 4 GROUPS FM 3560 TO 830M FM THR, SECOND OUTMOST GROUP 45M OFF-SET RWY CL.
 - 8) SCREEN HEIGHT 41FT.
 - 9) FIRST LGT 40M FM THR.
 - 10) FIRST LGT 40M FM THR.

LIGHTING AND MARKING AIDS RWY 04/22 AND EXIT TWY



CHANGES: MAG VAR AND EDITORIAL.