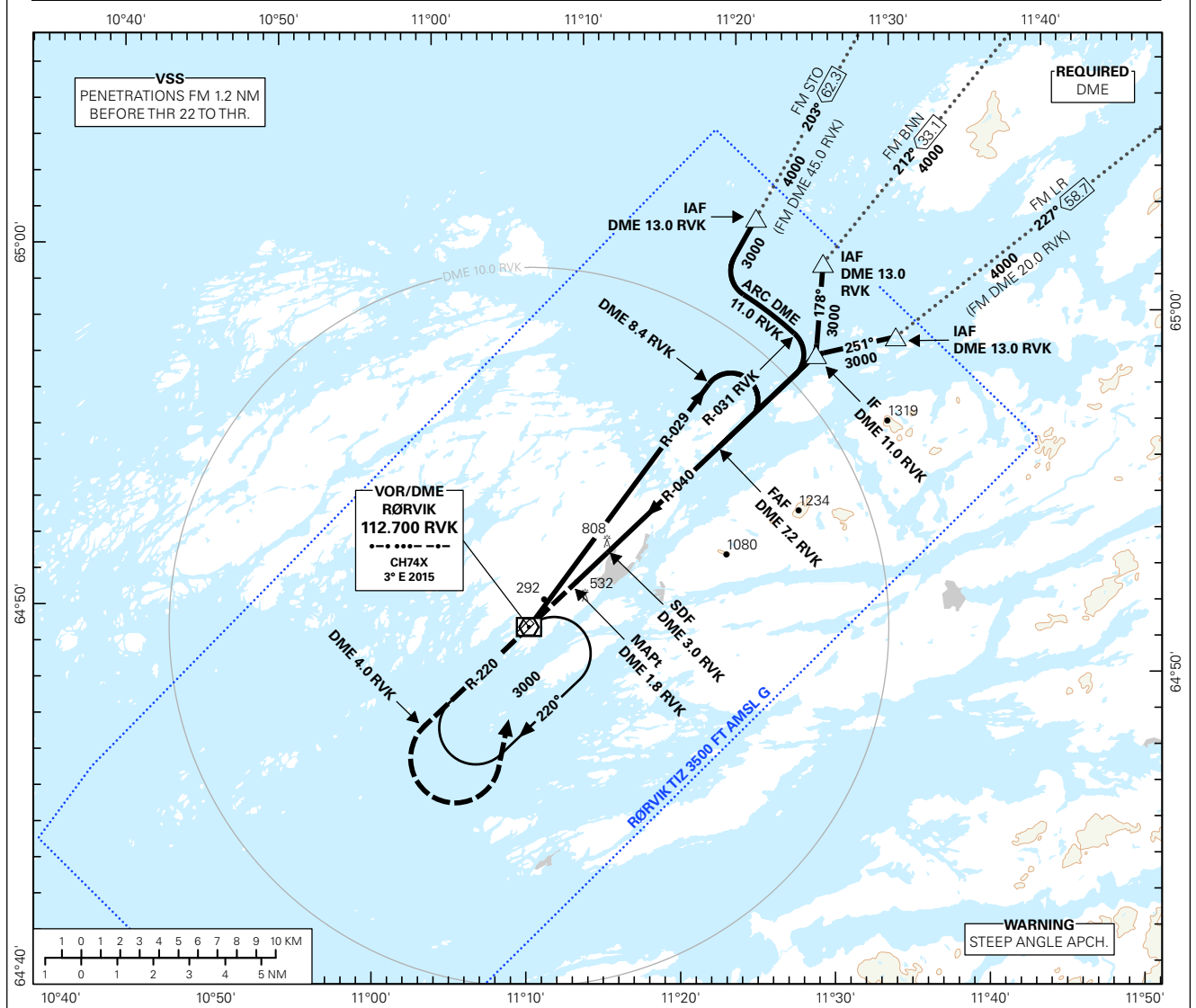


**INSTRUMENT APPROACH CHART - ICAO PLAN VIEW SCALE: 1:350 000**

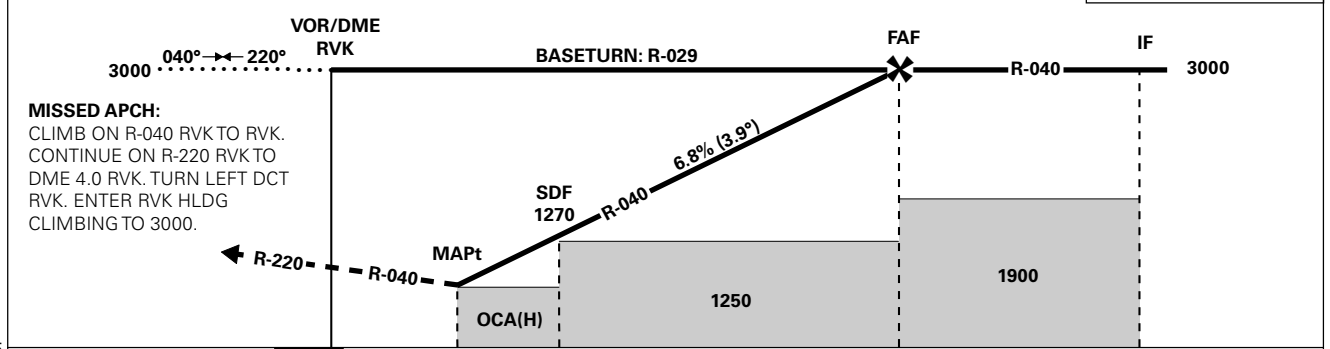
**RØRVIK  
RYUM  
VOR RWY 22**

<p>MSA 25 NM RVK</p>	AFIS: 119.800	AD ELEV: 15	DIST IN NM
	VDF: 119.800	THR ELEV: 15	
HGT RELATED TO THR RWY 22		ELEV, ALT AND HGT IN FT	
CIRCLING HGT RELATED TO AD ELEV		TRANSITION ALTITUDE	
BEARINGS ARE MAGNETIC - VAR 3.0 ° E (2015)		7000	



DIST TO RVK	9	8	7	6	5	4	3	2
ALT (HGT)	-	-	2920 (2905)	2510 (2495)	2090 (2075)	1680 (1665)	1270 (1255)	850 (835)

PROCEDURE OFFSET 2°



**MISSED APCH:**  
CLIMB ON R-040 RVK TO RVK.  
CONTINUE ON R-220 RVK TO  
DME 4.0 RVK. TURN LEFT DCT  
RVK. ENTER RVK HLDG  
CLIMBING TO 3000.

DME (RVK)	0	1.8	3.0	7.2	11.0
THR	0	1.6	2.9	7.1	10.9
CAT OF ACFT	A	B	C	D	
OCA(H)	780 (765)	-	-	-	
STRAIGHT - IN	-	-	-	-	
CIRCLING	780 (765)	880 (865)	-	-	

NOTE: CIRCLING NW OF AD ONLY.

CHANGES: EDITORIALS.