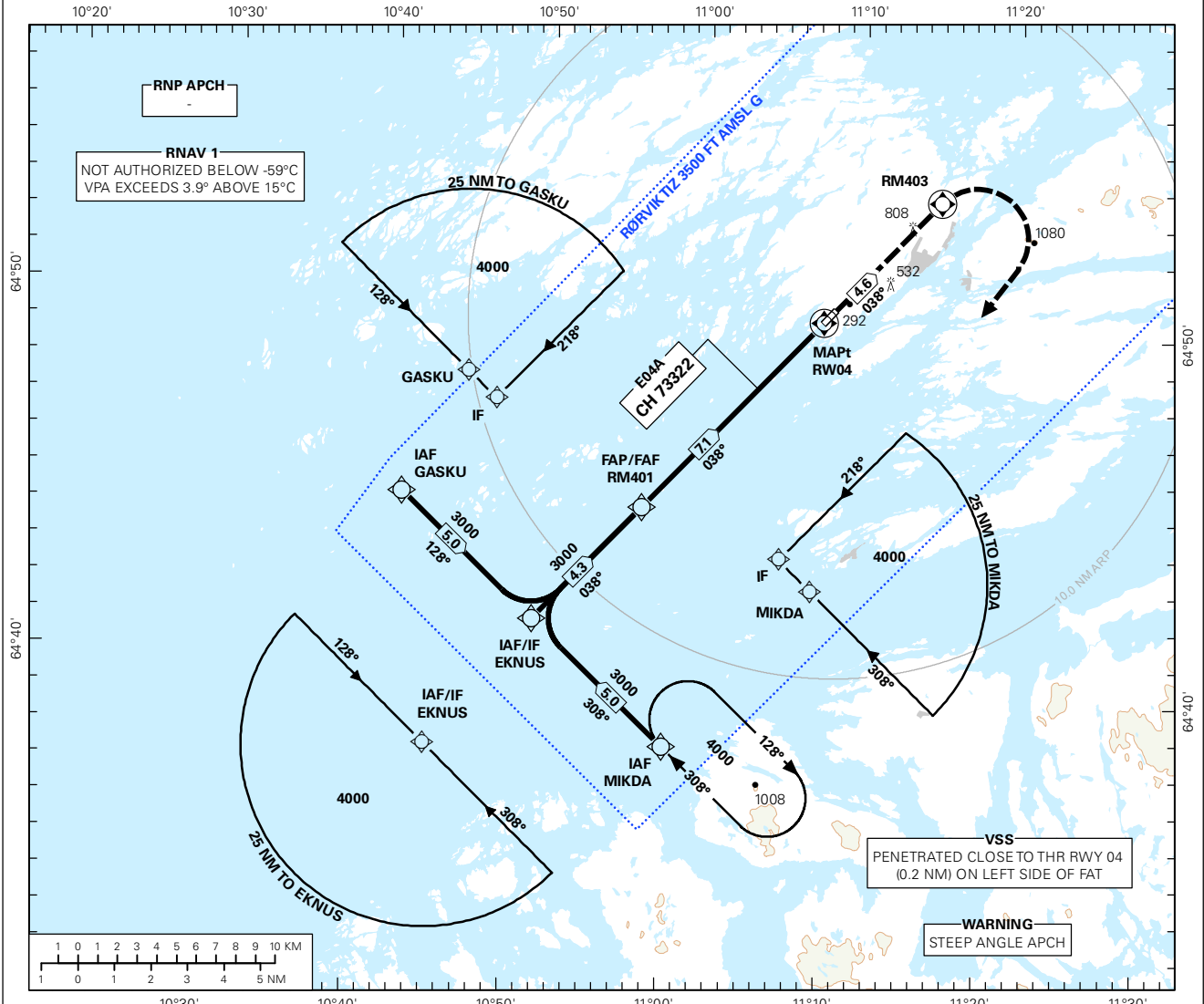
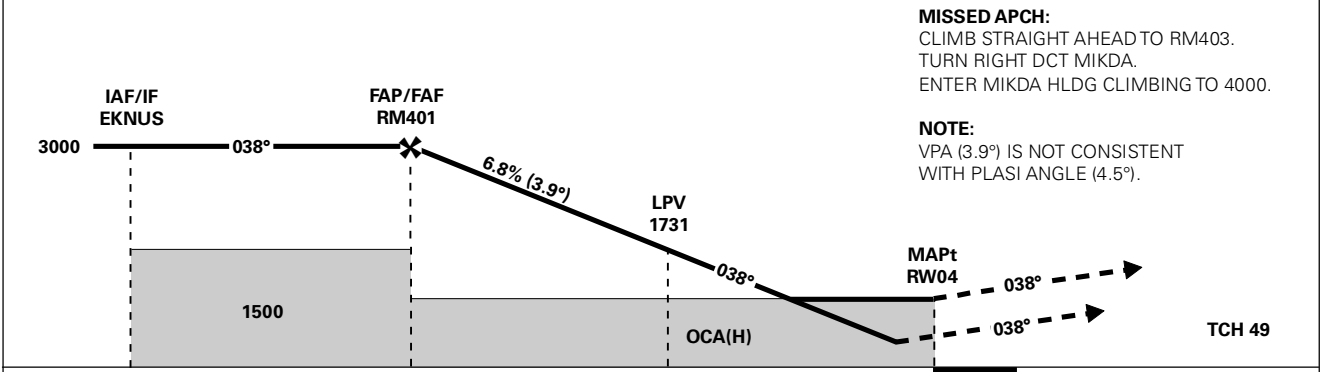


**INSTRUMENT APPROACH CHART - ICAO PLAN VIEW SCALE: 1:350 000**

AFIS: 119.800	AD ELEV: 15			<b>RØRVIK RYUM RNAV(GNSS) RWY 04</b>  TRANSITION ALTITUDE <b>7000</b>
VDF: 119.800	THR ELEV: 11	DIST IN NM		
HGT RELATED TO THR RWY 04		ELEV, ALT AND HGT IN FT		
CIRCLING HGT RELATED TO AD ELEV				
BEARINGS ARE MAGNETIC - VAR 3.0 ° E (2015)				



DIST FM RWY04	8	7	6	5	4	3	2
ALT (HGT)	-	2960 (2949)	2550 (2539)	2140 (2129)	1720 (1709)	1310 (1299)	890 (879)



CAT OF ACFT		A	B	C	D	FINAL APCH	DIST FAF - MAPt: 7.1					
OCA(H) STRAIGHT - IN	LPV 2.5%*	490 (479)	510 (499)	-	-							
	LPV 3.0%*	350 (339)	370 (359)	-	-							
	LPV 5.0%*	290 (279)	310 (299)	-	-							
	LNAV/VNAV 2.5%*	520 (509)	540 (529)	-	-							
	LNAV/VNAV 3.0%*	400 (389)	410 (399)	-	-							
CIRCLING	LNAV 2.5%*	560 (549)	580 (569)	-	-	SPEED	KT	70	90	100	120	130
	LNAV 3.0%*	470 (459)	880 (865)	-	-	TIME	MIN:SEC	06:06	04:44	04:16	03:33	03:17
NOTE: CIRCLING NW OF AD ONLY. *MNM MISSED APCH CLIMB GRADIENT.						ROD	FT/MIN	485	620	690	830	900

CHANGES: COMPLETE REVISION.

## RECOMMENDED RNAV PROCEDURE CODING

ENRM RNAV(GNSS) RWY 04										
Serial Number	Path Descriptor	Waypoint Identifier	Fly-over	Course °M(°T)	MAG VAR	DIST (NM)	Turn Dir	ALT (FT)	Speed (KT)	VPA/TCH
010	IF	GASKU		-	-	-	-	A4000+	-	-
020	TF	EKNUS	-	-	-	5.0	-	A3000+	-	-
010	IF	MIKDA	-	-	-	-	-	A4000+	-	-
020	TF	EKNUS	-	-	-	5.0	-	A3000+	-	-
010	IF	EKNUS	-	-	-	-	-	A4000+	-	-
020	TF	RM401	-	-	-	4.3	-	A3000+	-	-
030	TF	RW04	Y	-	-	7.1	-	-	-	-3.9/15
040	TF	RM403	Y	-	-	4.6	-	-	-	-
050	DF	MIKDA	-	-	-	-	R	-	-	-
060	HM	MIKDA	-	308 (311.3)	-	1 MIN	R	A4000+	-	-

Note: Recommended RNAV procedure coding is based on ARINC 424-15 and is provided solely to indicate which procedure design protection areas were used in the Instrument Flight Procedure Design process.

Note: The use of SBAS/GNSS geometric altitude as a source of altitude for approaches to LNAV/VNAV minima is permitted only for aircraft specifically certified for this type of operation. See "EASA-CM-AS-002 Clarifications to AMC 20-27" for additional information.

Note: Published OCA(H) values are obstacle clearance values. Decision heights (DH) below 250 FT shall not be used due to APV approach operation Type A limitations.

## FAS DATA BLOCK

<b>Operation type</b>	0	<b>LTP/FTP ellipsoidal height</b>	42.1
<b>SBAS Provider</b>	1	<b>FPAP latitude</b>	645043.9490N
<b>Airport Identifier</b>	ENRM	<b>FPAP longitude</b>	0110938.5285E
<b>Runway</b>	RW04	<b>Threshold crossing height</b>	15
<b>Approach performance designator</b>	0	<b>TCH units</b>	M
<b>Route Indicator</b>	-	<b>Glide path angle</b>	3.9
<b>Reference path data selector</b>	0	<b>Course width at threshold</b>	105
<b>Reference path Identifier</b>	E04A	<b>Length offset</b>	808
<b>LTP/FTP latitude</b>	645002.8500N	<b>Horizontal alert limit (HAL)</b>	40
<b>LTP/FTP longitude</b>	0110813.6170E	<b>Vertical alert limit (VAL)</b>	35
		<b>PRECISION APPROACH PATH CRC REMAINDER</b>	<b>2045D188</b>

## NON FAS DATA BLOCK FIELDS

<b>LTP Ortometric Height</b>	3.2
<b>FPAP Ortometric Height</b>	3.2