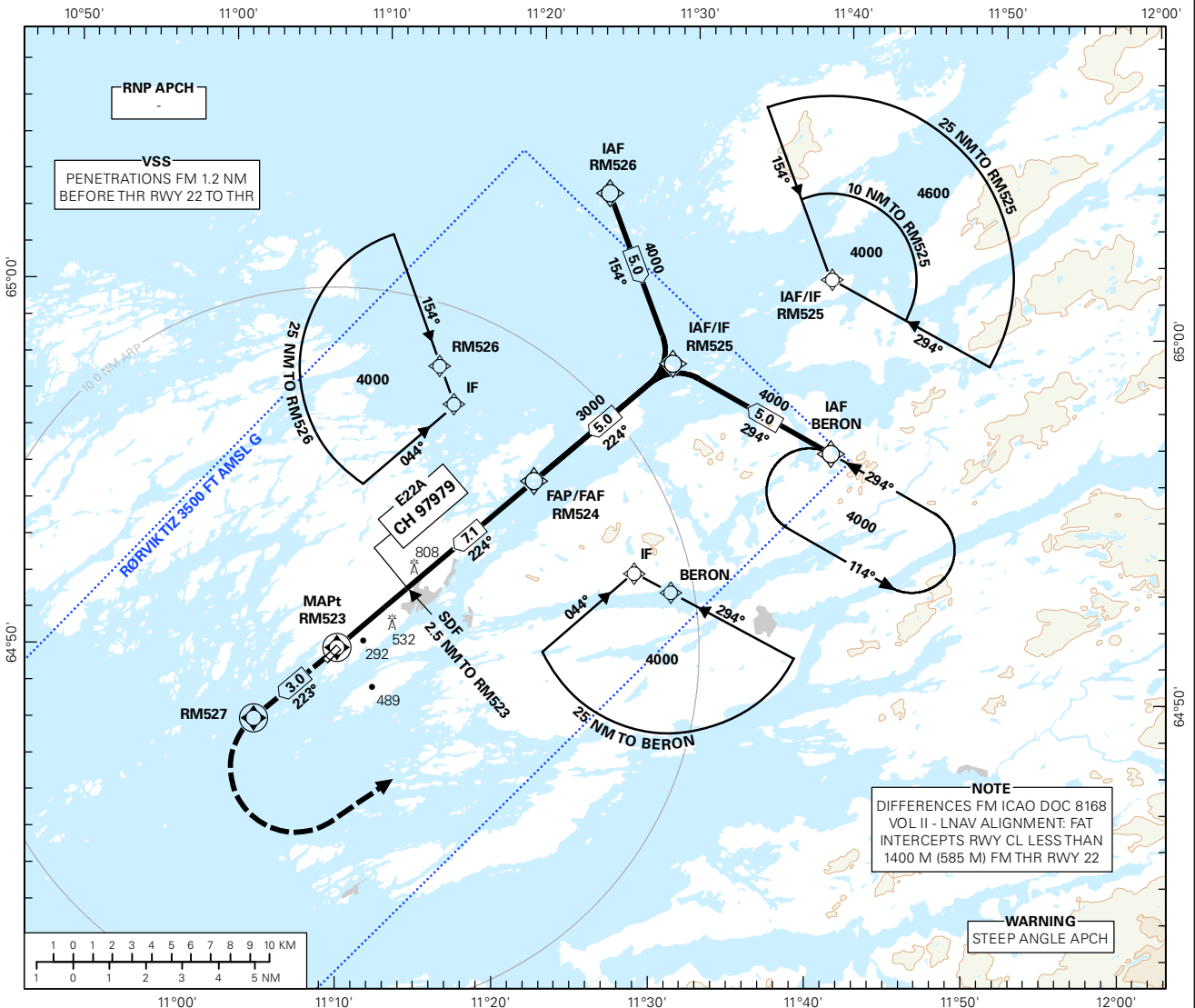


INSTRUMENT APPROACH CHART - ICAO PLAN VIEW SCALE: 1:350 000

AFIS: 119.800	AD ELEV: 15		DIST IN NM	RØRVIK RYUM RNAV(GNSS) RWY 22 TRANSITION ALTITUDE 7000
	VDF: 119.800	THR ELEV: 15		
HGT RELATED TO THR RWY 22		ELEV, ALT AND HGT IN FT		
CIRCLING HGT RELATED TO AD ELEV				
BEARINGS ARE MAGNETIC - VAR 3.0 ° E (2015)				

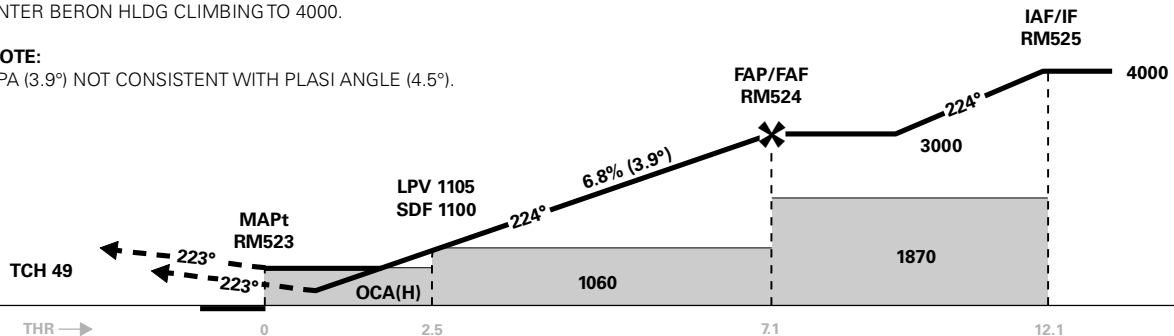


DIST TO RM523	9	8	7	6	5	4	3	2
ALT (HGT)	-	-	2970 (2955)	2550 (2535)	2140 (2125)	1730 (1715)	1310 (1295)	900 (885)

PROCEDURE OFFSET 5°

MISSED APCH:
 CLIMB TO RM527. TURN LEFT DCT BERON.
 ENTER BERON HLDG CLIMBING TO 4000.

NOTE:
 VPA (3.9°) NOT CONSISTENT WITH PLASI ANGLE (4.5°).



CAT OF ACFT	A	B	C	D	FINAL APCH	DIST FAF - MAPt: 7.1					
	488 (473)	508 (493)	-	-		SPEED	KT	70	90	100	120
OCA(H) STRAIGHT - IN	LPV	780 (765)	-	-	TIME	MIN:SEC	06:05	04:44	04:16	03:33	03:17
	LNAV	780 (765)	880 (865)	-	ROD	FT/MIN	485	620	690	830	900

NOTE: CIRCLING NW OF AD ONLY.

CHANGES: COMPLETE REVISION.

RECOMMENDED RNAV PROCEDURE CODING

ENRM RNAV(GNSS) RWY 22										
Serial Number	Path Descriptor	Waypoint Identifier	Fly-over	Course °M(°T)	MAG VAR	DIST (NM)	Turn Dir	ALT (FT)	Speed (KT)	VPA/TCH
010	IF	RM526	-	-	-	-	-	A4000+	-	-
020	TF	RM525	-	-	-	5.0	-	A4000+	-	-
010	IF	BERON	-	-	-	-	-	A4000+	-	-
020	TF	RM525	-	-	-	5.0	-	A4000+	-	-
010	IF	RM525	-	-	-	-	-	A4000+	-	-
020	TF	RM524	-	-	-	5.0	-	A3000+	-	-
030	TF	RM523	Y	-	-	7.1	-	-	-	-3.9/15
040	TF	RM527	Y	-	-	3.0	-	-	-	-
050	DF	BERON	-	-	-	-	L	-	-	-
060	HM	BERON	-	294(296.8)	-	1 MIN	L	A4000+	-	-

Note: Recommended RNAV procedure coding is based on ARINC 424-15 and is provided solely to indicate which procedure design protection areas were used in the Instrument Flight Procedure Design process.

Note: Published OCA(H) values are obstacle clearance values. Decision heights (DH) below 250 FT shall not be used due to APV approach operation Type A limitations.

Note: FNA APCH TR 5° OFFSET , RM523= FTP.

FAS DATA BLOCK

Operation type	0	LTP/FTP ellipsoidal height	43.4
SBAS Provider	1	FPAP latitude	644946.3240N
Airport Identifier	ENRM	FPAP longitude	0110719.4365E
Runway	RW22	Threshold crossing height	15
Approach performance designator	0	TCH units	M
Route Indicator	-	Glide path angle	3.9
Reference path data selector	0	Course width at threshold	105
Reference path Identifier	E22A	Length offset	0
LTP/FTP latitude	645024.1255N	Horizontal alert limit (HAL)	40
LTP/FTP longitude	0110852.4025E	Vertical alert limit (VAL)	35
		PRECISION APPROACH PATH CRC REMAINDER	5806A4E2

NON FAS DATA BLOCK FIELDS

LTP Ortometric Height	4.5
FPAP Ortometric Height	4.5