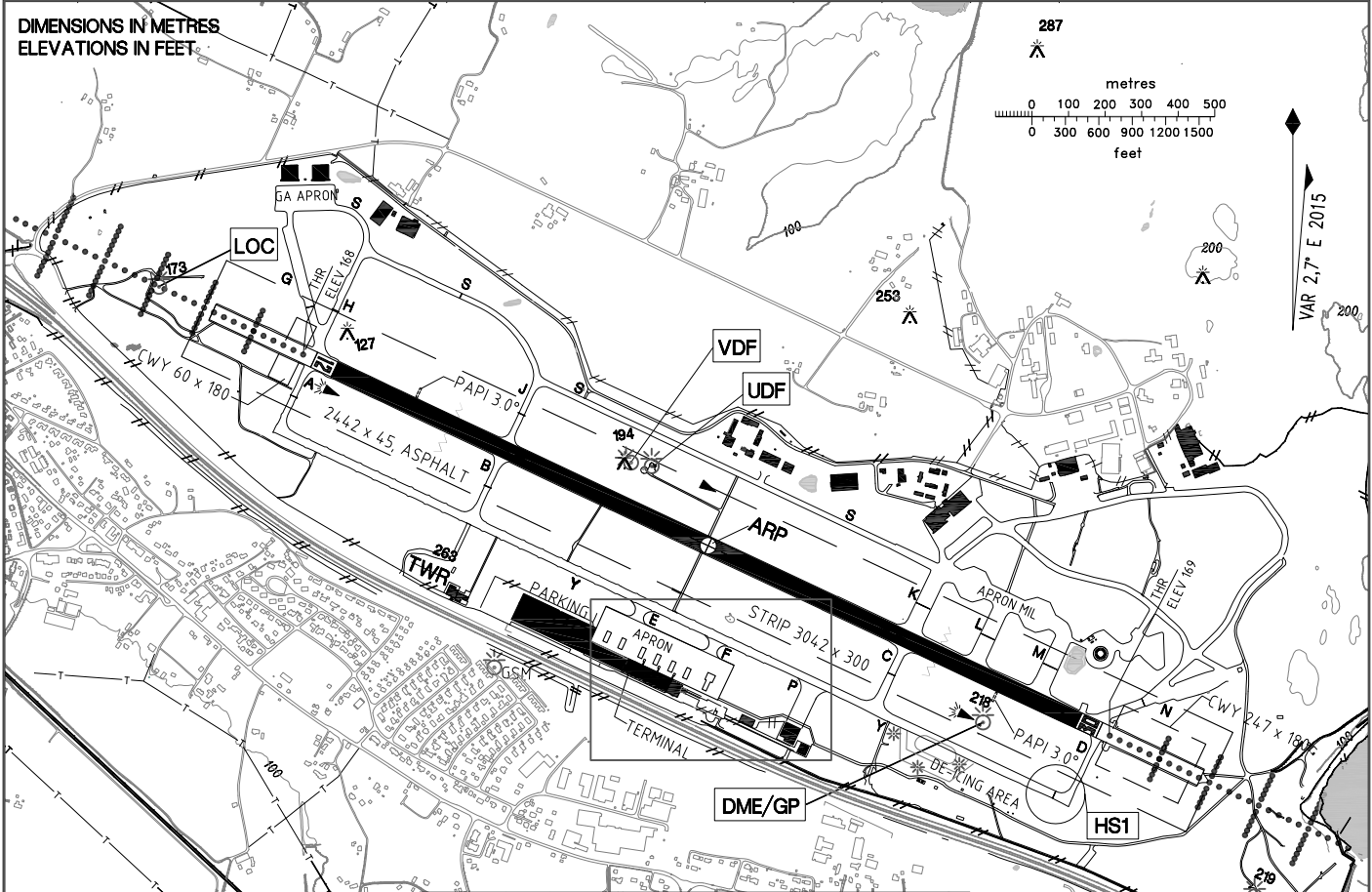
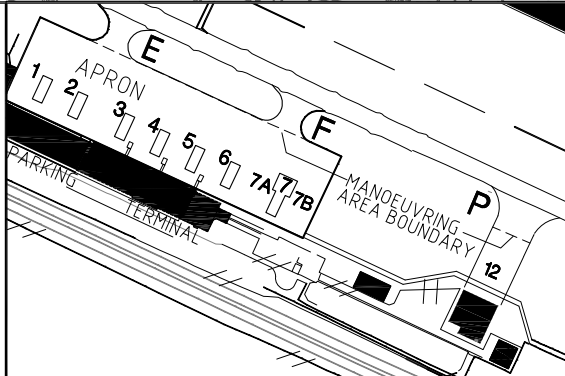


AERODROME CHART		59°22'44"N 010°47'08"E WGS 84		AD ELEV 173 FT	ATIS 136.175 MHZ GND/CLR 121.700 MHZ TWR 119.500 MHZ	MOSS RYGE NORWAY			
RWY	BRG (GEO)	THRESHOLD		BEARING STRENGTH	DECLARED DISTANCES ³⁾				TWY AND APRON
					TORA	ASDA	TODA	LDA	
12	116.79°	592301.45 N	0104558.50 E	PCN-70 F/C/W/T	2442	2442	2689	2442	TWY; SEE NOTES ¹⁾
30	296.82°	592225.86 N	0104816.57 E	PCN-70 F/C/W/T	2442	2442	2502	2442	APRON; SEE NOTES ²⁾



NOTES-REMARKS

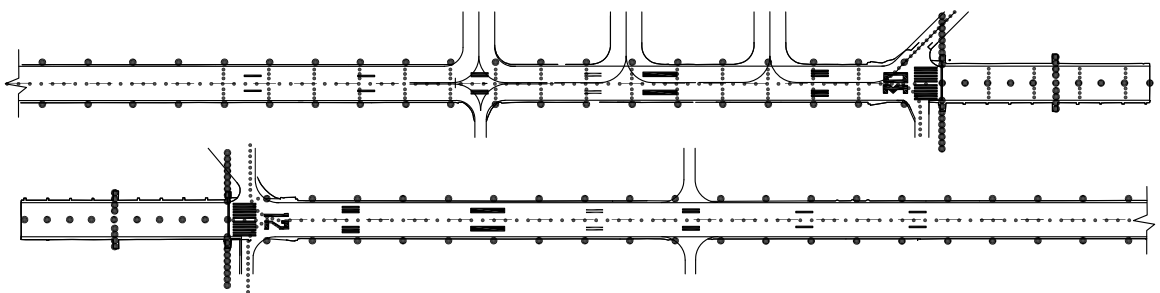
- ALL TWY PCN - 70 F/C/W/T
TWY A, D WID 23 M CONC
TWY B, C, G, H, J, N, S, T WID 15 M ASPH
TWY E, F WID 23 M ASPH
TWY K, L, M WID 23 M ASPH
TWY Y WID 22.5 ASPH
TWY P WID 45 M ASPH
- APRON CONC/ASPH PCN - 70/F/B/X/T
HANGAR APRON CONC/ASPH,
PCN - 70/F/C/W/T
MIL APRON CONC/ASPH PCN - 85/R/C/W/T
DE-ICE 46 X 186 M PCN - 70/F/B/X/T
STAND 1, 2, 3, 4, 5, 6, 7A, 7B, 12 CODE C
STAND 7 CODE E
- REDUCED (ALTERNATE) TKOF PSN REF AD 2.13



RUNWAY INCURSION HOT SPOTS

- HS1**
- Holding point RWY 30 is located on TWY Y, short of TWY D.

LIGHTING AND MARKING AIDS RWY 12/30 AND EXIT TWY



RWY	APCH	THR	PAPI	TDZ	RWY CL	EDGE	END
12	W CL/XBAR LIL/H	G LIH	3.0° MEHT 55FT	951M	1542M W / 600M W/R / 300M R	1640M W / 800M Y LIH	R LIH
30	W CL/XBAR LIL/H	G LIH	3.0° MEHT 54FT	951M	1542M W / 600M W/R / 300M R	1640M W / 800M Y LIH	R LIH

CHANGES: HOT SPOT, HOLDING POSITIONS, COMMUNICATION AND MAG VAR.