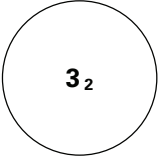
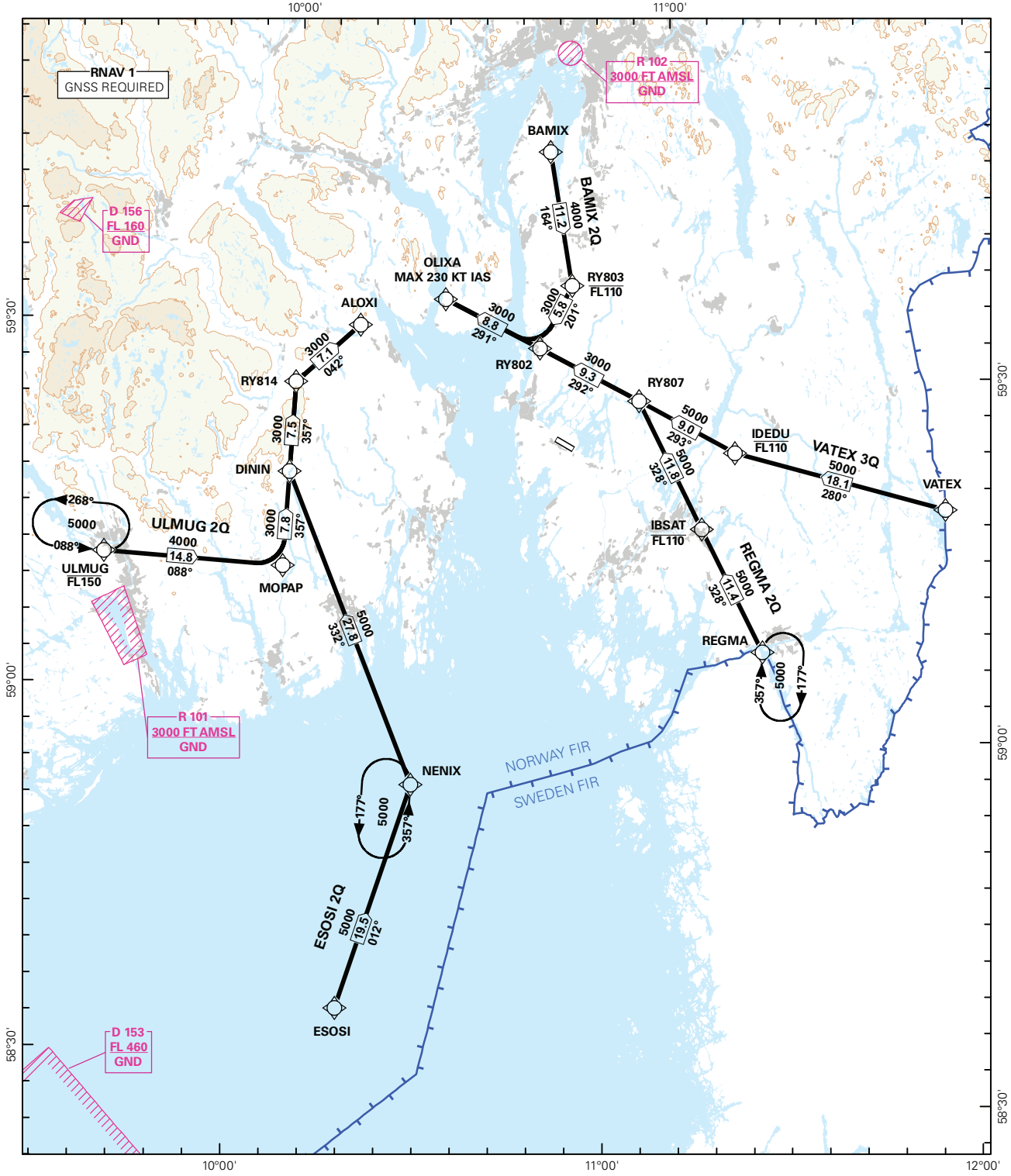


STANDARD ARRIVAL CHART INSTRUMENT (RNAV 1 STAR BASED ON GNSS)

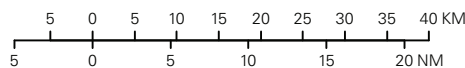
 <p>MSA 25 NM ARP</p>	ATIS: 136.175	ALT AND ELEV ARE IN FT DIST IN NM		<p><b>MOSS/RYGGE</b></p> <p><b>RWY 12</b></p> <p>NORWAY</p>	
	APP: 134.050 124.350				
	TWR: 119.500	1:900 000	VAR: 2.7 ° E (2015)		TA 7000
	VDF: 119.500	BAMIX 2Q, ESOSI 2Q, REGMA 2Q, ULMUG 2Q, VATEX 3Q			



CHANGES: VATEX 3Q.

STAR DESCRIPTION OVERLEAF  
DESCRIPTION OF WAYPOINTS, REF ENR 4.4

ATS AIRSPACE CLASSIFICATIONS: REF ENR 1.4  
LEGEND: REF GEN 2.3



**STANDARD ARRIVAL ROUTES - INSTRUMENT  
(RNAV 1 STAR BASED ON GNSS)**
**MOSS/Rygge  
RWY 12**

**GENERAL:** Surveillance service shall be available.

**LOSS OF RNAV 1 CAPABILITY:** Request vectoring.

**VECTORING:** Vectoring may be used for sequencing.

**RADIO COMMUNICATION FAILURE:** Squawk A7600. Proceed on STAR and make APCH to RWY 12.

DESIGNATOR	ROUTE	RESTRICTIONS	DESCEND	CLEARANCE LIMIT
<b>BAMIX 2Q</b> (BAMIX TWO QUEBEC ARRIVAL)	From BAMIX, to RY803, to RY802, turn right to OLIXA.	Cross BAMIX at or above 4000 FT. Cross RY803 between 4000 FT and FL 110. Cross RY802 at or above 3000 FT. Cross OLIXA at or above 3000 FT, MAX 230 KT IAS.	As cleared by ATC.	OLIXA
<b>ESOSI 2Q</b> (ESOSI TWO QUEBEC ARRIVAL)	From ESOSI to NENIX, to DININ, to RY814 to ALOXI.	Cross ESOSI at or above 5000 FT. Cross NENIX at or above 5000 FT. Cross DININ at or above 5000 FT. Cross RY814 at or above 3000 FT. Cross ALOXI at or above 3000 FT.	As cleared by ATC.	ALOXI
<b>REGMA 2Q</b> (REGMA TWO QUEBEC ARRIVAL)	From REGMA, to IBSAT, to RY807, to RY802 to OLIXA.	Cross REGMA at or above 5000 FT. Cross IBSAT between 5000 FT and FL 110. Cross RY807 at or above 5000 FT. Cross RY802 at or above 3000 FT. Cross OLIXA at or above 3000 FT, MAX 230 KT IAS.	As cleared by ATC.	OLIXA
<b>ULMUG 2Q</b> (ULMUG TWO QUEBEC ARRIVAL)	From ULMUG to MOPAP, turn left to DININ, to RY814 to ALOXI.	Cross ULMUG between 5000 FT and FL 150. Cross MOPAP at or above 4000 FT. Cross DININ at or above 3000 FT. Cross RY814 at or above 3000 FT. Cross ALOXI at or above 3000 FT.	As cleared by ATC.	ALOXI
<b>VATEX 3Q</b> (VATEX THREE QUEBEC ARRIVAL)	From VATEX to IDEDU, to RY807, TO RY802, TO OLIXA.	Cross VATEX at or above 5000 FT. Cross IDEDU between 5000 FT and FL 110. Cross RY807 at or above 5000 FT. Cross RY802 at or above 3000 FT. Cross OLIXA at or above 3000 FT, MAX 230 KT IAS.	As cleared by ATC.	OLIXA