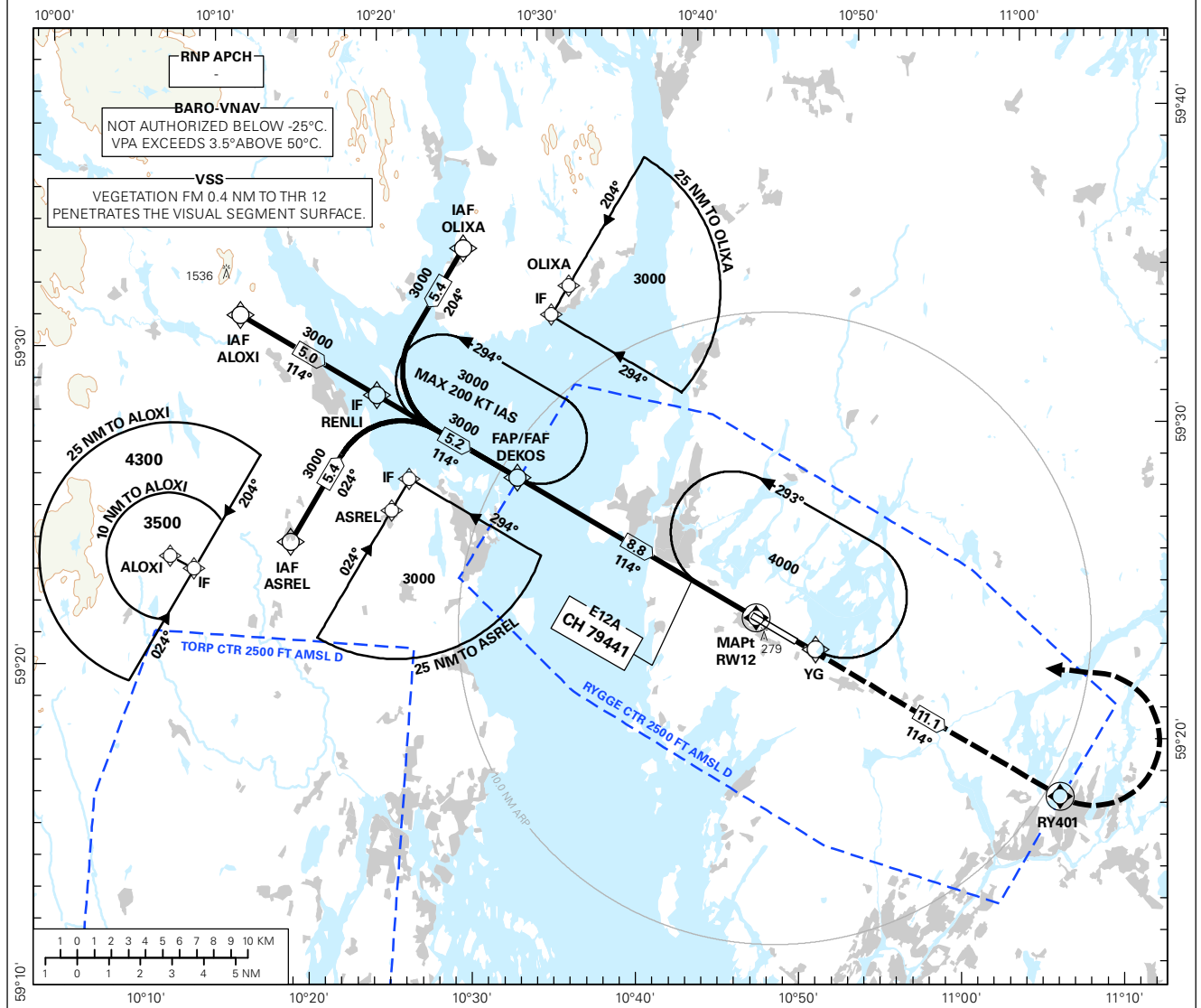


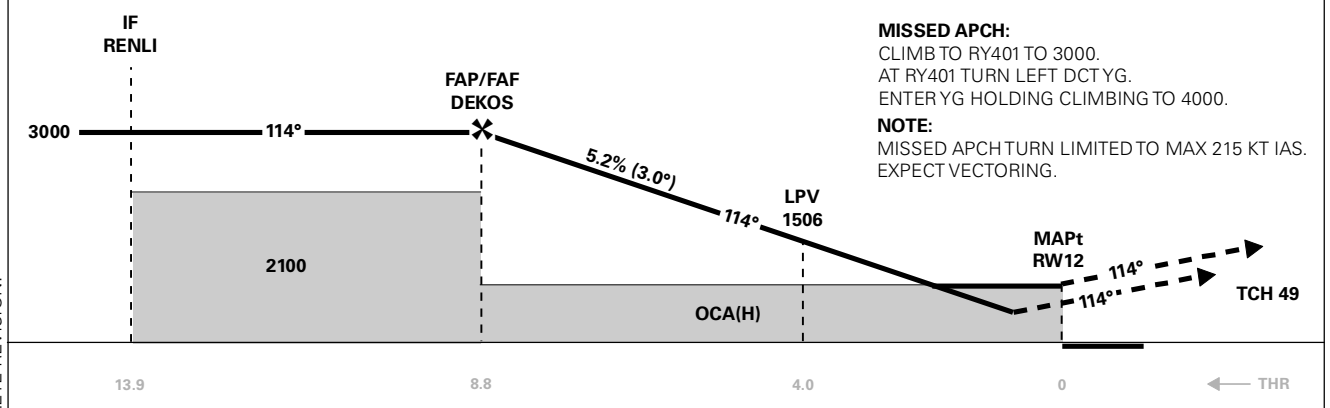
**INSTRUMENT APPROACH CHART - ICAO PLAN VIEW SCALE: 1:400 000**

ATIS: 136.175	AD ELEV: 173	
APP FARRIS: 124.350 134.050	THR ELEV: 168	DIST IN NM
TWR: 119.500	HGT RELATED TO THR RWY 12	ELEV, ALT AND HGT IN FT
VDF: 119.500	CIRCLING HGT RELATED TO AD ELEV	
BEARINGS ARE MAGNETIC - VAR 2.7 ° E (2015)		

MOSS  
**RYGGE**  
**RNAV(GNSS) RWY 12**  
TRANSITION ALTITUDE  
7000



DIST TO RW12	8	7	6	5	4	3	2	1
ALT (HGT)	2770 (2602)	2450 (2282)	2130 (1962)	1810 (1642)	1490 (1322)	1180 (1012)	860 (692)	540 (372)



CAT OF ACFT	A	B	C	D	FINAL APCH	DIST FAF - MAPt: 8.8						
	410 (242)	420 (252)	430 (262)	440 (272)		SPEED	KT	70	90	120	150	180
OCA(H) STRAIGHT-IN	LNNAV/VNAV	410 (242)	420 (252)	440 (272)		TIME	MIN:SEC	07:30	05:50	04:23	03:30	02:55
	LNNAV	530 (362)				ROD	FT/MIN	370	480	635	795	955
CIRCLING	620 (447)		860 (687)	870 (697)								

NOTE: -

CHANGES: COMPLETE REVISION.

## RECOMMENDED RNAV PROCEDURE CODING

ENRY RNAV(GNSS) RWY 12										
Serial Number	Path Descriptor	Waypoint Identifier	Fly-over	Course °M(°T)	MAG VAR	DIST (NM)	Turn Dir	ALT (FT)	Speed (KT)	VPA/TCH
010	IF	OLIXA	-	-	-	-	-	A3000+	-	-
020	TF	RENLI	-	204 (206.5)	-	5.4	-	A3000+	-	-
010	IF	ASREL	-	-	-	-	-	A3000+	-	-
020	TF	RENLI	-	024 (026.4)	-	5.4	-	A3000+	-	-
010	IF	ALOXI	-	-	-	-	-	A3000+	-	-
020	TF	RENLI	-	114 (116.3)	-	5.0	-	A3000+	-	-
030	TF	DEKOS	-	114 (116.4)	-	5.2	-	A3000+	-	-
040	TF	RW12	Y	114 (116.6)	-	8.8	-	-	-	-3.0/15
050	TF	RY401	Y	114 (116.8)	-	11.1	-	A3000-	-	-
060	DF	YG	-	-	-	-	L	A4000	K215-	-
070	HM	YG	-	113 (116.0)	-	1 MIN	L	A4000+	-	-

Note: Recommended RNAV procedure coding is based on ARINC 424-15 and is provided solely to indicate which procedure design protection areas were used in the Instrument Flight Procedure Design process.

Note: Published OCA(H) values are obstacle clearance values. Decision heights (DH) below 250 FT shall not be used due to APV approach operation Type A limitations.

Note: DEKOS holding not included in standard APCH transitions.

## FAS DATA BLOCK

Operation type	0	LTP/FTP ellipsoidal height	89.9
SBAS Provider	1	FPAP latitude	592221.8740N
Airport Identifier	ENRY	FPAP longitude	0104832.0210E
Runway	RW12	Threshold crossing height	15
Approach performance designator	0	TCH units	M
Route Indicator	-	Glide path angle	3.0
Reference path data selector	0	Course width at threshold	105
Reference path Identifier	E12A	Length offset	0
LTP/FTP latitude	592301.4475N	Horizontal alert limit (HAL)	40
LTP/FTP longitude	0104558.5030E	Vertical alert limit (VAL)	50
		PRECISION APPROACH PATH CRC REMAINDER	A78B34CA

## NON FAS DATA BLOCK FIELDS

LTP Ortometric Height	51.2
FPAP Ortometric Height	51.2