

INSTRUMENT APPROACH CHART - ICAO PLAN VIEW SCALE: 1:350 000

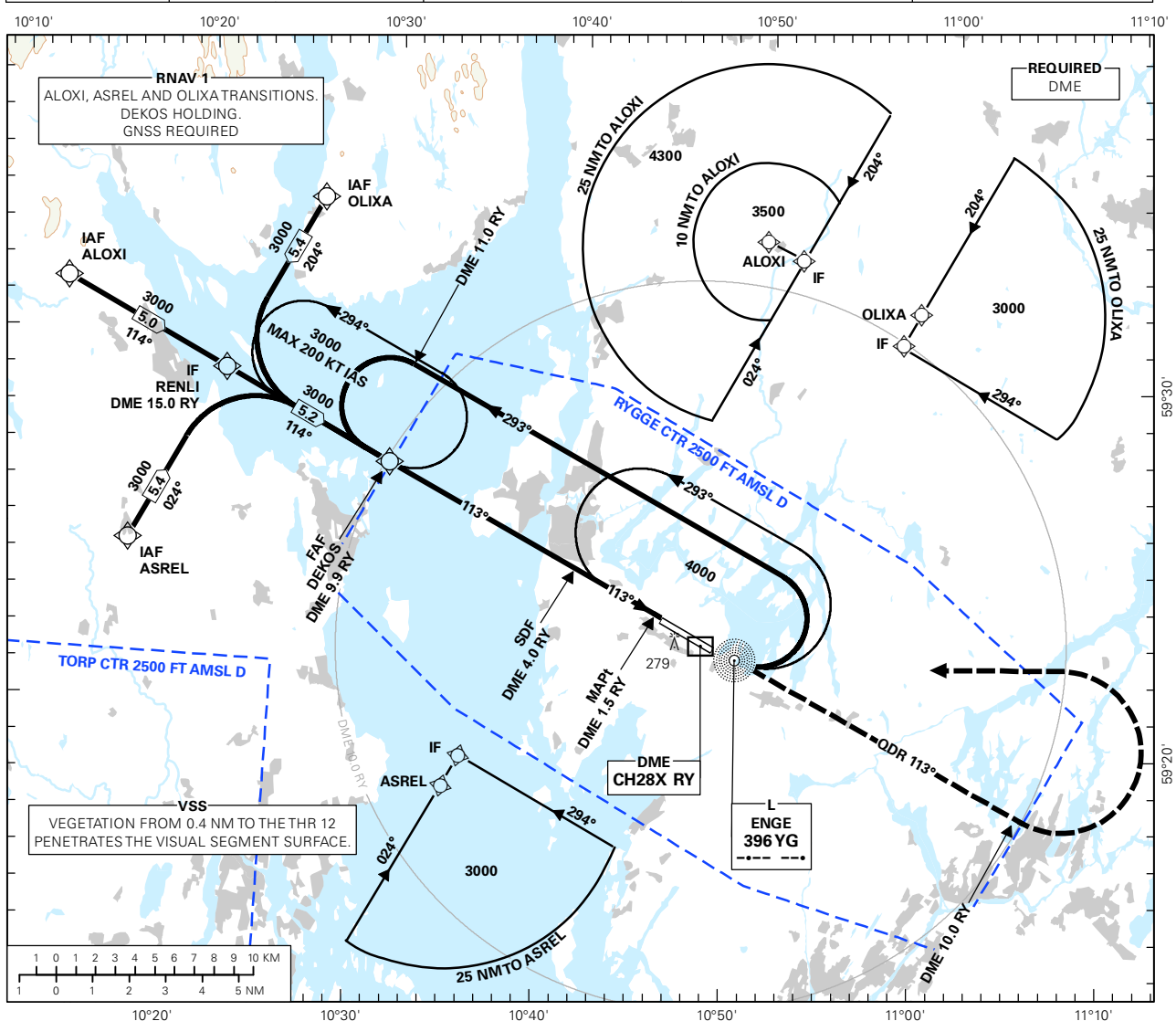
MOSS

RYGGE

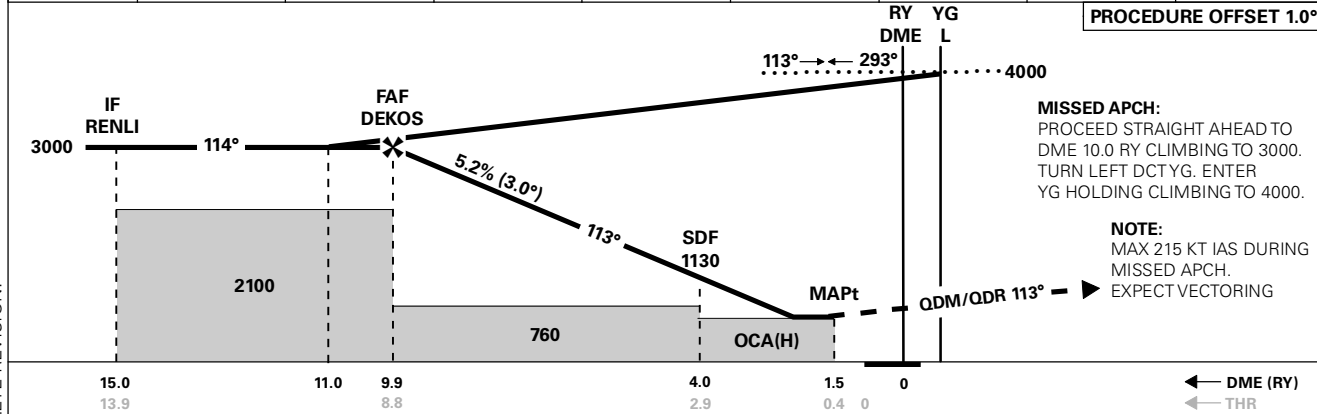
NDB RWY 12

TRANSITION ALTITUDE
7000

ATIS: 136.175	AD ELEV: 173
APP FARRIS: 124.350 134.050	THR ELEV: 168
TWR: 119.500	HGT RELATED TO THR RWY 12
VDF: 119.500	ELEV, ALT AND HGT IN FT
CIRCLING HGT RELATED TO AD ELEV	
BEARINGS ARE MAGNETIC - VAR 2.7 ° E (2015)	



DIST TO RY	10	9	8	7	6	5	4	3
ALT (HGT)	-	2720 (2552)	2400 (2232)	2080 (1912)	1770 (1602)	1450 (1282)	1130 (962)	810 (642)



MISSED APCH:
PROCEED STRAIGHT AHEAD TO DME 10.0 RY CLIMBING TO 3000. TURN LEFT DCT YG. ENTER YG HOLDING CLIMBING TO 4000.

NOTE:
MAX 215 KT IAS DURING MISSED APCH. EXPECT VECTORING

CAT OF ACFT	A	B	C	D	FINAL APCH	DIST FAF - MAPt: 8.4					
	520 (352)					SPEED	KT	70	90	120	150
STRAIGHT - IN					TIME	MIN:SEC	07:13	05:37	04:13	03:22	02:49
CIRCLING	620 (446)		860 (686)	870 (696)	ROD	FT/MIN	375	480	640	795	955

NOTE:

CHANGES: COMPLETE REVISION.