

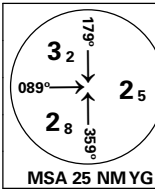
INSTRUMENT APPROACH CHART - ICAO PLAN VIEW SCALE: 1:350 000

RYGGE

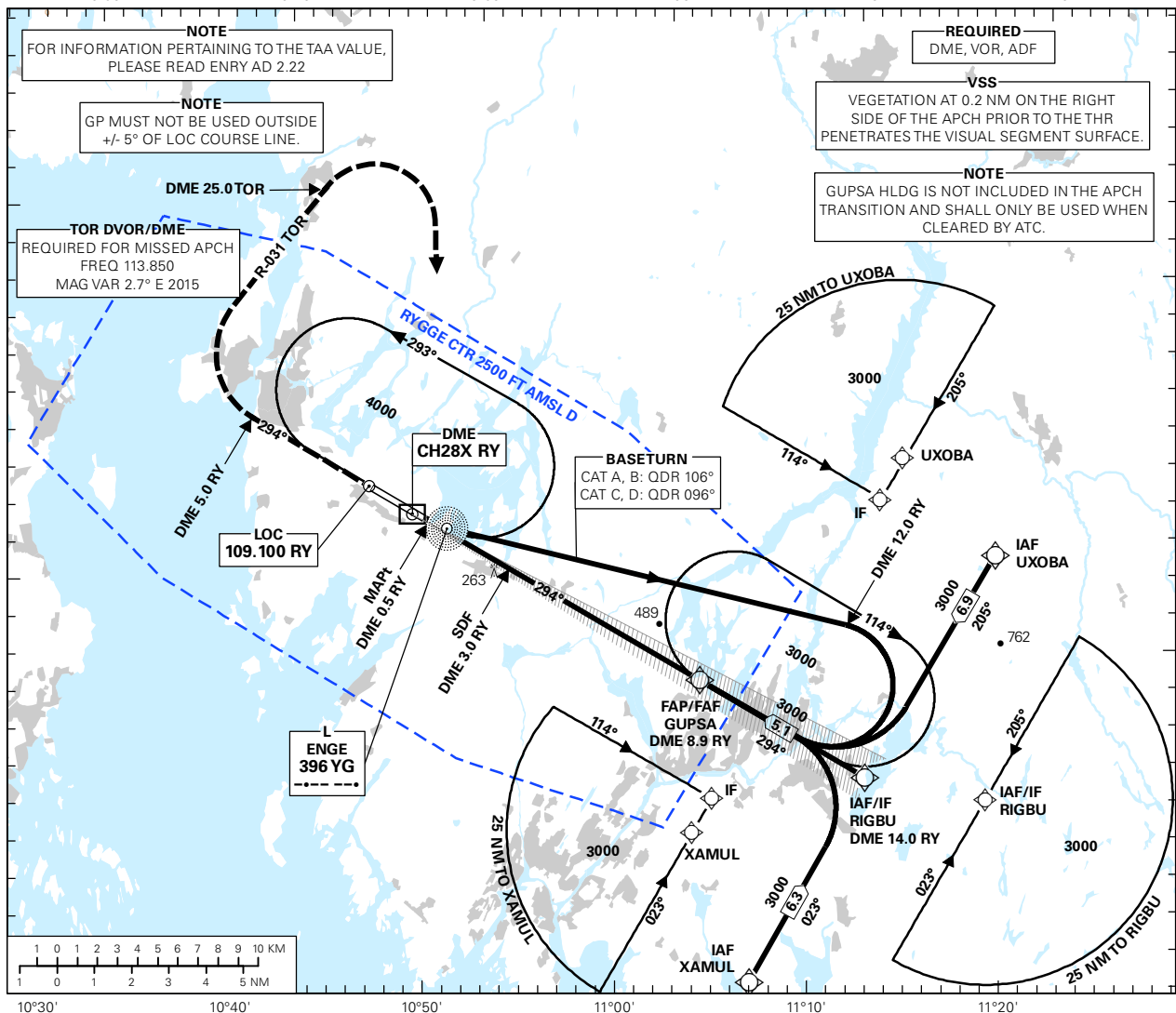
RYGGE

ILS or LOC RWY 30

**TRANSITION ALTITUDE
7000**



ATIS:	136.175	AD ELEV:	173
APP FARRIS:	124.350 134.050	THR ELEV:	169
TWR:	119.500	HGT RELATED TO THR RWY 30	ELEV, ALT AND HGT IN FT
VDF:	119.500	CIRCLING HGT RELATED TO AD ELEV	
BEARINGS ARE MAGNETIC - VAR 3 ° E (2015)			



DIST TO RY	9	8	7	6	5	4	3	2
ALT (HGT)	-	2720 (2551)	2400 (2231)	2080 (1911)	1760 (1591)	1440 (1271)	1120 (951)	810 (641)

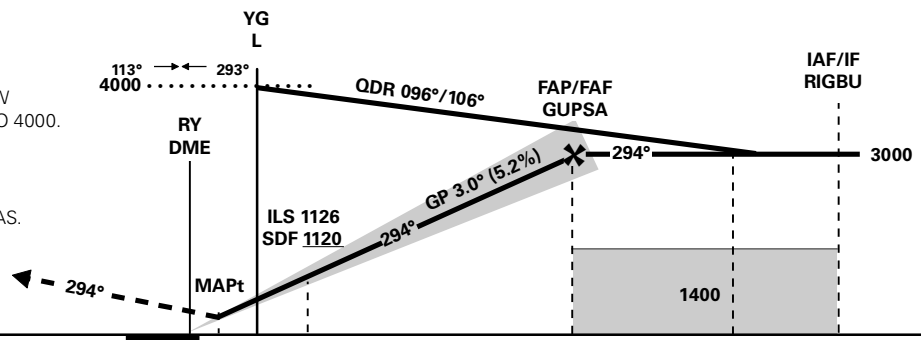
ILS RDH 51

MISSED APCH:

PROCEED STRAIGHT AHEAD TO DME 5.0 RY CLIMBING TO 3000. TURN RIGHT TO INTERCEPT AND FOLLOW R-031 TOR TO DME 25.0 TOR CLIMBING TO 4000. AT DME 25.0 TOR TURN RIGHT DCT YG. ENTER YG HLDG AT 4000.

NOTE:

MISSED APCH LIMITED TO MAX 185 KT IAS. EXPECT VECTORING.



CAT OF ACFT		A	B	C	D
OCA (H) STRAIGHT - IN	CAT I	370 (201)	382 (213)	390 (221)	401 (232)
	LOC	500 (331)			
CIRCLING		640 (467)	680 (507)	870 (697)	890 (717)

NOTE:

CHANGES: PROCEDURE NAME, EDITORIALS.