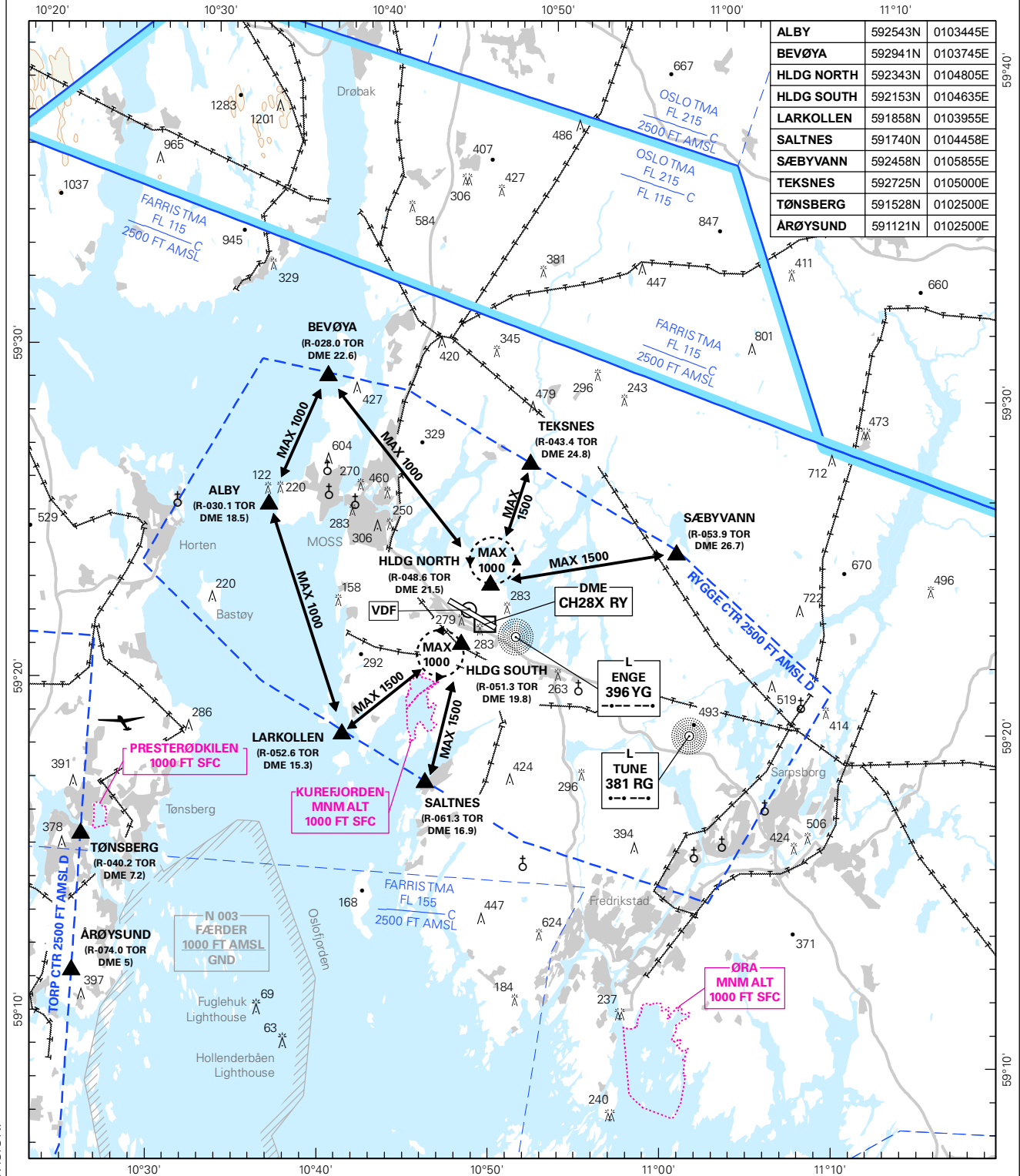


VFR - ROUTES LIGHT AIRCRAFT PLAN VIEW SCALE: 1:325 000

ATIS: 136.175	AERODROME ELEVATION: 173 FT	ELEV, ALT AND HGT IN FT	MOSS RYGGE NORWAY
APP: 134.050 124.350	OBSTACLES LESS THAN 100 FT GND ARE NORMALLY NOT SHOWN		
TWR: 119.500	MAGNETIC VARIATION: 2.7 ° E (2015)		
VDF: 119.500	TRANSITION ALTITUDE: 7000		



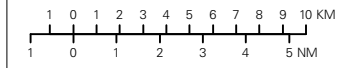
ALBY	592543N	0103445E
BEVØYA	592941N	0103745E
HLDG NORTH	592343N	0104805E
HLDG SOUTH	592153N	0104635E
LARKOLLEN	591858N	0103955E
SALTNES	591740N	0104458E
SÆBYVANN	592458N	0105855E
TEKSNES	592725N	0105000E
TØNSBERG	591528N	0102500E
ARØYSUND	591121N	0102500E

CHANGES: COMPLETE REVISION.

VFR RCF PROC
 1. SQUAWK 7600
 2. PROCEED TO HOLDING NORTH OR HOLDING SOUTH
 3. FLASH LDG LGT AND WATCH TWR FOR VISUAL SIGNALS

PAPI RWY 12: LEFT 3.0°, MEHT 55 FT.
 PAPI RWY 30: LEFT 3.0°, MEHT 54 FT.

NOTE:
 TOR VOR/DME: 113.850



ATS AIRSPACE CLASSIFICATION: REF ENR 1.4
 LEGENDS: REF GEN 2.3