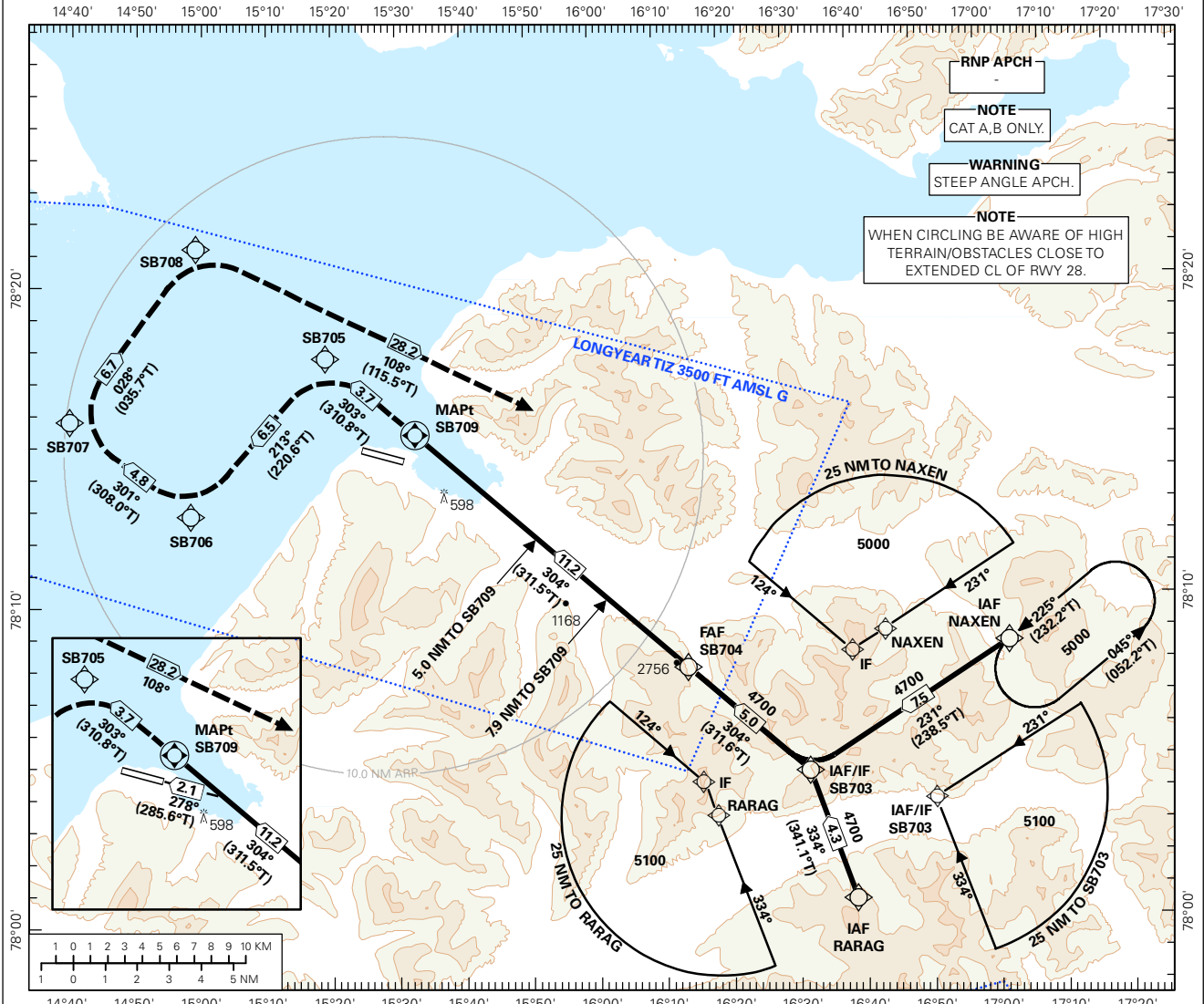


INSTRUMENT APPROACH CHART - ICAO PLAN VIEW SCALE: 1:400 000

AFIS: 118.100 119.850	AD ELEV: 94	
VDF: 118.100	THR ELEV: 79	DIST IN NM
HGT RELATED TO THR RWY 28		ELEV, ALT AND HGT IN FT
CIRCLING HGT RELATED TO AD ELEV		
BEARINGS ARE MAGNETIC - VAR 7.5° E (2015)		

SVALBARD
LONGYEAR
RNAV(GNSS) -A
TRANSITION ALTITUDE
5000

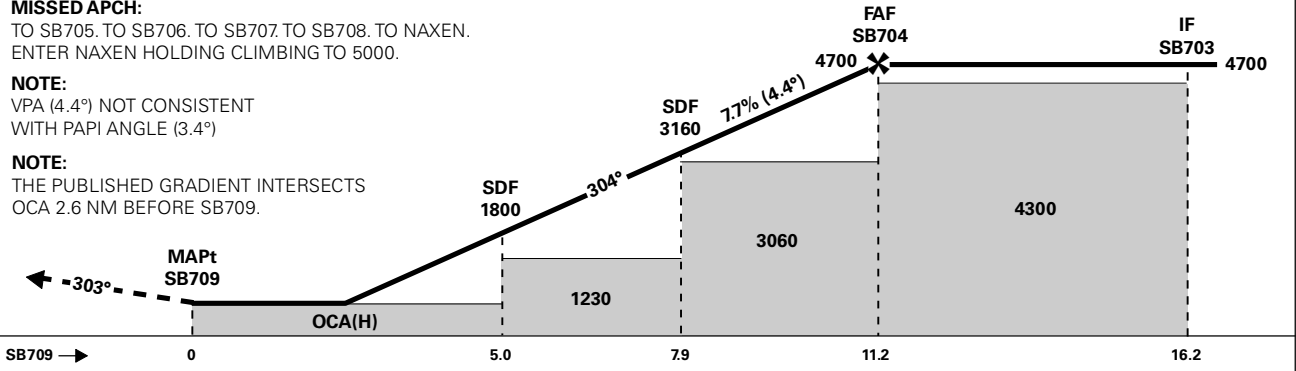


DIST TO SB709	11	10	9	8	7	6	5	4
ALT (HGT)	4600 (4521)	4130 (4051)	3670 (3591)	3200 (3121)	2740 (2661)	2270 (2191)	1800 (1721)	1340 (1261)

MISSED APCH:
 TO SB705. TO SB707. TO SB708. TO NAXEN.
 ENTER NAXEN HOLDING CLIMBING TO 5000.

NOTE:
 VPA (4.4°) NOT CONSISTENT
 WITH PAPI ANGLE (3.4°)

NOTE:
 THE PUBLISHED GRADIENT INTERSECTS
 OCA 2.6 NM BEFORE SB709.



CAT OF ACFT	A	B	C	D	FINAL APCH	DIST FAF - SB709: 11.2					
	-	-	-	-		SPEED	KT	70	90	100	120
OCA(H) STRAIGHT - IN	-	-	-	-	TIME	MIN:SEC	09:38	07:29	06:45	05:37	05:11
CIRCLING	650 (556)*	-	-	-	ROD	FT/MIN	544	700	777	933	1010

NOTE: CIRCLING N OF AD ONLY.*AUTH REQUIRED 120KT/25° BANK DURING CIRCLING.

CHANGES: EDITORIALS.

RECOMMENDED RNAV PROCEDURE CODING

ENSB RNAV(GNSS) - A										
Serial Number	Path Descriptor	Waypoint Identifier	Fly-over	Course °M(°T)	MAG VAR	DIST (NM)	Turn Dir	ALT (FT)	Speed (KT)	VPA/TCH
010	IF	NAXEN	-	-	-	-	-	A5000+	-	-
020	TF	SB703	-	231(238.5)	-	7.5	-	A4700+	-	-
010	IF	RARAG	-	-	-	-	-	A5100+	-	-
020	TF	SB703	-	334(341.1)	-	4.3	-	A4700+	-	-
010	IF	SB703	-	-	-	-	-	A4700+	-	-
020	TF	SB704	-	304(311.6)	-	5.0	-	A4700+	-	-
030	TF	SB709	Y	304(311.5)	-	11.2	-	-	-	-
040	TF	SB705	-	303(310.8)	-	3.7	-	-	-	-
050	TF	SB706	-	213(220.6)	-	6.5	-	-	-	-
060	TF	SB707	-	301(308.0)	-	4.8	-	-	-	-
070	TF	SB708	-	028(035.7)	-	6.7	-	-	-	-
080	TF	NAXEN	-	108(115.5)	-	28.2	-	A5000	-	-
090	HM	NAXEN	-	225(232.2)	-	1 MIN	L	A5000+	-	-

Note: Recommended RNAV procedure coding is based on ARINC 424-15 and is provided solely to indicate which procedure design protection areas were used in the Instrument Flight Procedure Design process.