

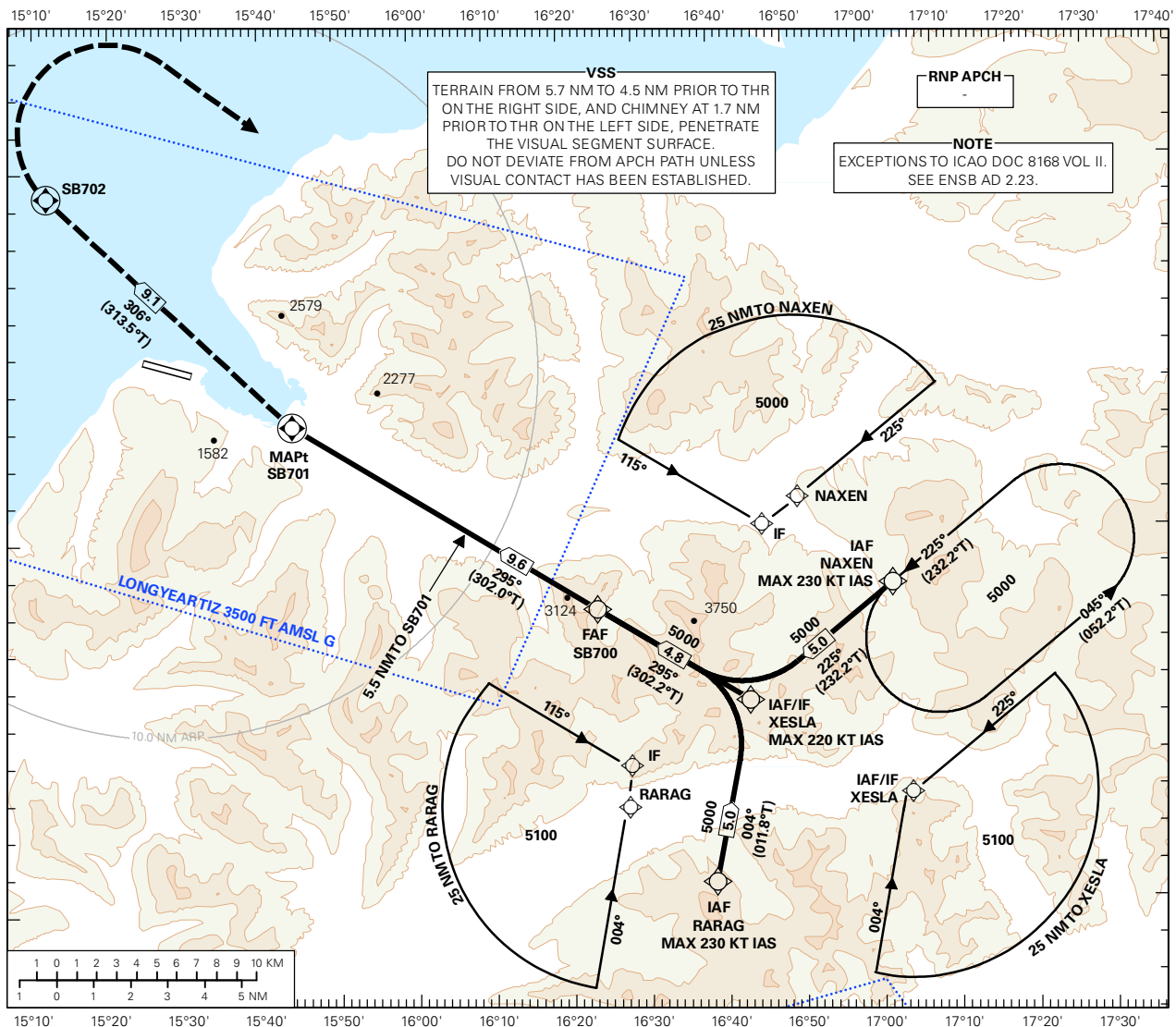
INSTRUMENT APPROACH CHART - ICAO PLAN VIEW SCALE: 1:350 000

SVALBARD

LONGYEAR

RNAV(GNSS) RWY 28

AFIS: 118.100 119.850	AD ELEV: 94	
VDF: 118.100	THR ELEV: 79	DIST IN NM
HGT RELATED TO THR RWY 28		ELEV, ALT AND HGT IN FT
CIRCLING HGT RELATED TO AD ELEV		TRANSITION ALTITUDE
BEARINGS ARE MAGNETIC - VAR 75° E (2015)		5000

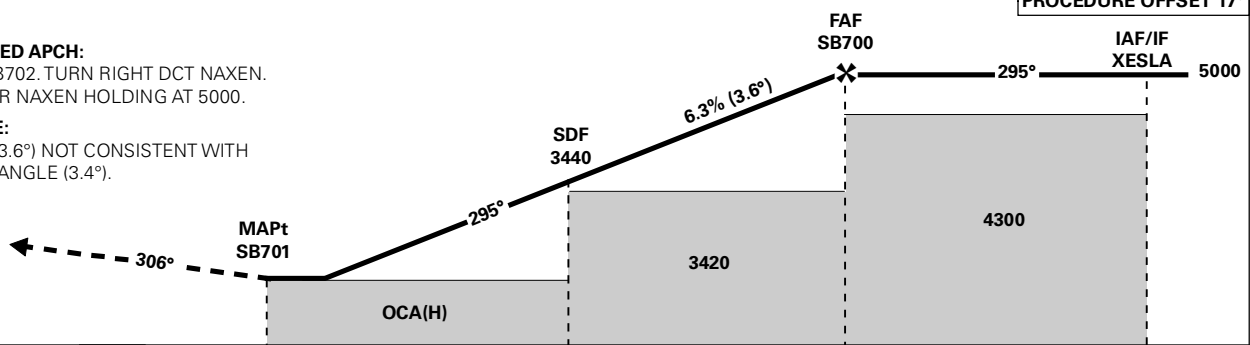


DIST TO SB701	8	7	6	5	4	3	2	1
ALT (HGT)	4390 (4311)	4010 (3931)	3630 (3551)	3240 (3161)	2860 (2781)	2480 (2401)	2100 (2021)	1710 (1631)

PROCEDURE OFFSET 17°

MISSED APCH:
TO SB702. TURN RIGHT DCT NAXEN.
ENTER NAXEN HOLDING AT 5000.

NOTE:
VPA (3.6°) NOT CONSISTENT WITH
PAPI ANGLE (3.4°).



SB701 →	0	5.5	9.6	14.4
THR →	0	3.1	8.6	12.7

CAT OF ACFT	A	B	C	D	FINAL APCH	DIST FAF - MAPt: 9.6						
	LNVA 2.5 %*	1470 (1391)	1490 (1411)	1530 (1451)		1570 (1491)	SPEED	KT	70	90	120	150
STRAIGHT - IN	LNVA 4.0 %*	1430 (1351)		1480 (1401)	1540 (1461)	TIME	MIN:SEC	08:14	06:25	04:49	03:51	03:13
	LNVA 5.0 %*	-		1450 (1371)	1510 (1431)	ROD	FT/MIN	450	575	770	960	1150
CIRCLING	1470 (1376)	2040 (1946)	3560 (3466)									

NOTE: CIRCLING N OF AD ONLY. *MNM MISSED APCH CLIMB GRADIENT.

CHANGES: NEW PROCEDURE.

RECOMMENDED RNAV PROCEDURE CODING

ENSB RNAV(GNSS) RWY 28										
Serial Number	Path Descriptor	Waypoint Identifier	Fly-over	Course °M(°T)	MAG VAR	DIST (NM)	Turn Dir	ALT (FT)	Speed (KT)	VPA/TCH
010	IF	NAXEN	-	-	-	-	-	A5000+	K230-	-
020	TF	XESLA	-	225 (232.2)	-	5	-	A5000+	K220-	-
010	IF	RARAG	-	-	-	-	-	A5100+	K230-	-
020	TF	XESLA	-	004 (011.8)	-	5	-	A5000+	K220-	-
010	IF	XESLA	-	-	-	-	-	A5000+	K220-	-
020	TF	SB700	-	295 (302.2)	-	4.8	-	A5000+	-	-
030	TF	SB701	Y	295 (302.0)	-	9.6	-	-	-	-
040	TF	SB702	Y	306 (313.5)	-	9.1	-	-	-	-
050	DF	NAXEN	-	-	-	-	R	A5000+	-	-
060	HM	NAXEN	-	225 (232.2)	-	1 MIN	L	A5000+	-	-

Note: Recommended RNAV procedure coding is based on ARINC 424-15 and is provided solely to indicate which procedure design protection areas were used in the Instrument Flight Procedure Design process.