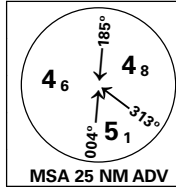


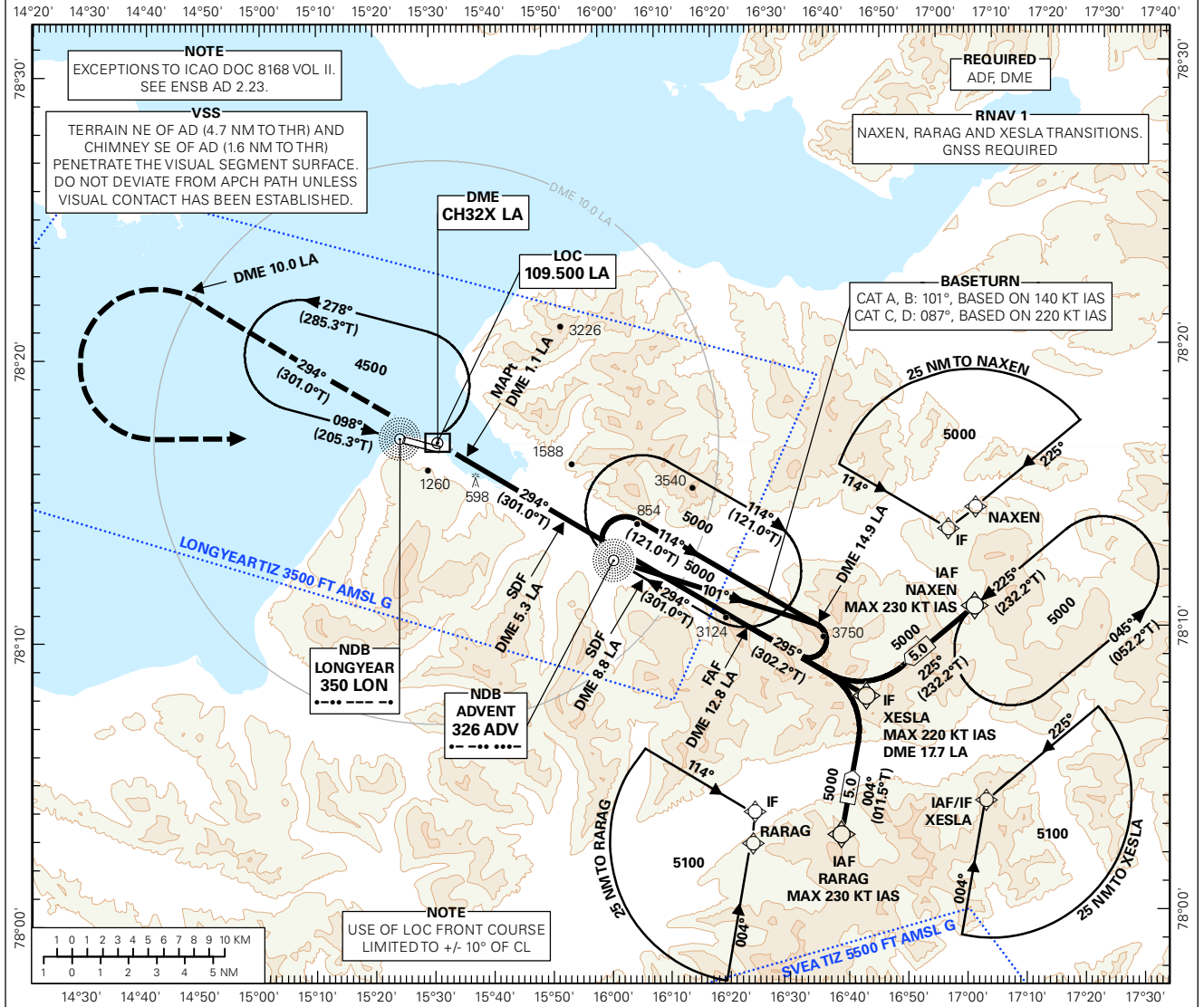
INSTRUMENT APPROACH CHART - ICAO PLAN VIEW SCALE: 1:450 000

**SVALBARD
LONGYEAR
LOC RWY 28**

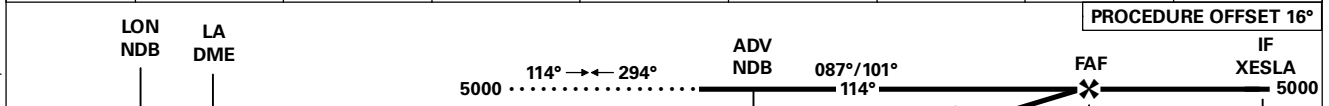


AFIS: 118.100 119.850	AD ELEV: 94
VDF: 118.100	THR ELEV: 79
DIST IN NM	
HGT RELATED TO THR RWY 28	ELEV, ALT AND HGT IN FT
CIRCLING HGT RELATED TO AD ELEV	
BEARINGS ARE MAGNETIC - VAR 75 ° E (2015)	

**TRANSITION ALTITUDE
5000**



DIST TO LA	11	10	9	8	7	6	5	4
ALT (HGT)	4310 (4231)	3930 (3851)	3550 (3471)	3160 (3081)	2780 (2701)	2400 (2321)	2010 (1931)	1630 (1551)



MISSED APCH:
CLIMB STRAIGHT AHEAD ON TRACK 294°. WHEN PASSING DME 10.0 LA, TURN LEFT DCT LON. ENTER LON HOLDING CLIMBING TO 4500.

DME (LA) →	0	1.1	5.3	7.5	8.8	12.8	17.7
THR →	0	1.0	5.2	7.4	8.7	12.7	17.5

CAT OF ACFT	A	B	C	D	FINAL APCH	DIST FAF - MAPt: 11.7					
	1300 (1221)		1310 (1231)			SPEED	KT	70	90	120	150
OCA(H) STRAIGHT - IN	2.5%*	1160 (1081)	510 (431)		TIME	MIN:SEC	10:02	07:48	05:51	04:41	03:54
	3.0%*				ROD	FT/MIN	450	580	770	960	1155
CIRCLING	1300 (1206)	2040 (1946)	3560 (3466)								

NOTE: CIRCLING N OF AD ONLY. *MNM MISSED APCH CLIMB GRADIENT.

CHANGES: INITIAL AND INTERMEDIATE SEGMENTS, MSA, EDITORIALS

AITS AIRSPACE CLASSIFICATION: REF ENR 1.4