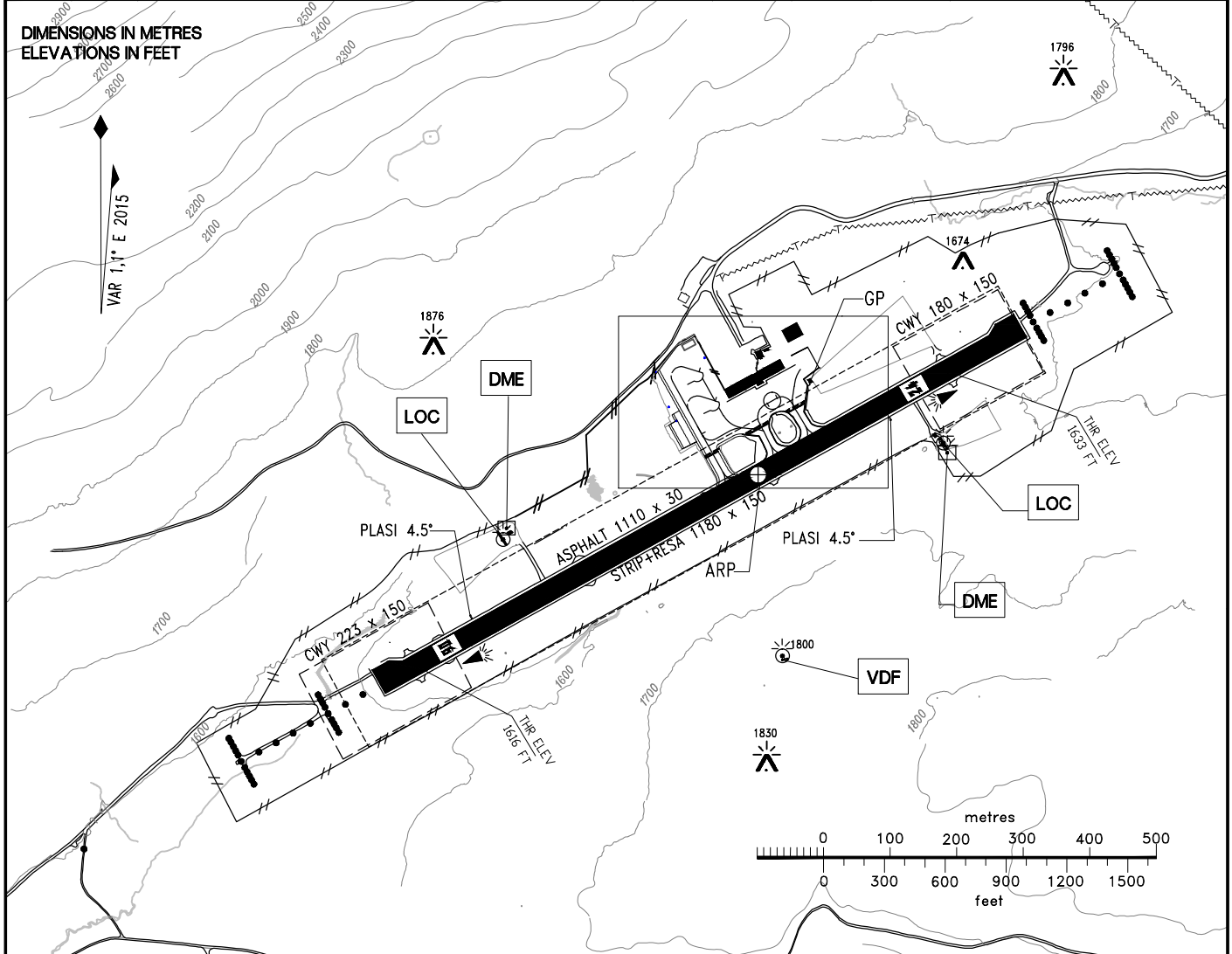
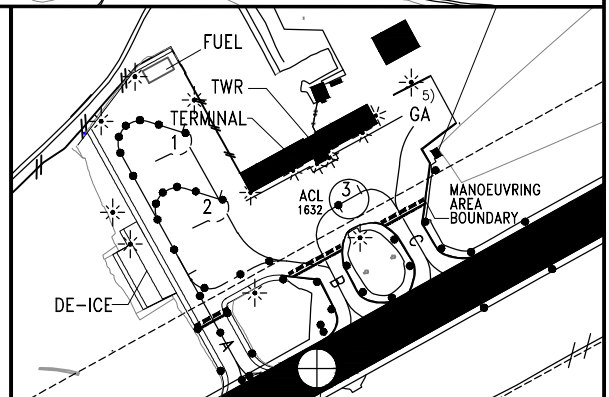


AERODROME CHART		61°09'22"N 007°08'16"E WGS 84		AD ELEV 1633 FT	AFIS 119.300 MHZ			SOGNDAL HAUKÅSEN NORWAY	
RWY	BRG (GEO)	THRESHOLD		BEARING STRENGTH	DECLARED DISTANCES				TWY AND APRON TWY A WIDTH 19M TWY B, C WIDTH 19M PCN-15/F/B/X/U
					TORA	ASDA	TODA	LDA	
06	059.32°	610912.68 N	0070742.10 E	PCN-15/F/B/X/U	930	930	1110	870	
24	239.33°	610927.85 N	0070835.02 E	PCN-15/F/B/X/U	1000	1000	1223	870	

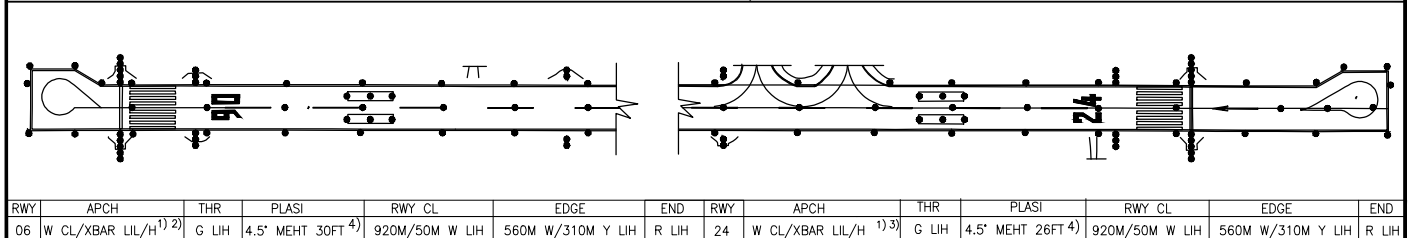


NOTES-REMARKS

- 1) RWY 06: XBAR AT 300M AND 150 M FM THR. INNERMOST LGT 30 M FM THR AND FLUSH WITH SURFACE.
RWY 24: XBAR AT 300M AND 150 M FM THR. INNERMOST 4 LGTS 120M FM THR AND FLUSH WITH SURFACE.
- 2) RWY 06: 8 SEQUENCED FLG LGT FM 1740 TO 480 M FM THR. 3 YELLOW LEAD IN LIGHTS WEST OF RWY 06, DISTANCE FROM THR 425, 926 AND 1433M. BALKED LDG GUIDANCE LGT LOCATED 295 M FM THR. 6 CIRCLING LGT S OF AD (REF ENSG 6-1).
- 3) RWY 24: FLG WHITE LGT AT CENTRE OF OUTER XBAR. BALKED LDG GUIDANCE LGT LOCATED 310 M FM THR.
- 4) SCREENHEIGHT RWY 06: 52FT.
SCREENHEIGHT RWY 24: 67FT.
- 5) GA APRON MAX WINGSPAN 18M.



LIGHTING AND MARKING AIDS RWY 06/24 AND EXIT TWY



RWY	APCH	THR	PLASI	RWY CL	EDGE	END	RWY	APCH	THR	PLASI	RWY CL	EDGE	END
06	W CL/XBAR LIL/H ¹⁾²⁾	G LIL	4.5° MEHT 30FT ⁴⁾	920M/50M W LIL	560M W/310M Y LIL	R LIL	24	W CL/XBAR LIL/H ¹⁾³⁾	G LIL	4.5° MEHT 26FT ⁴⁾	920M/50M W LIL	560M W/310M Y LIL	R LIL

CHANGES: NOTES-REMARKS, EDITORIAL.