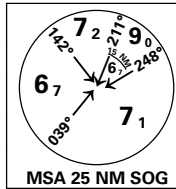
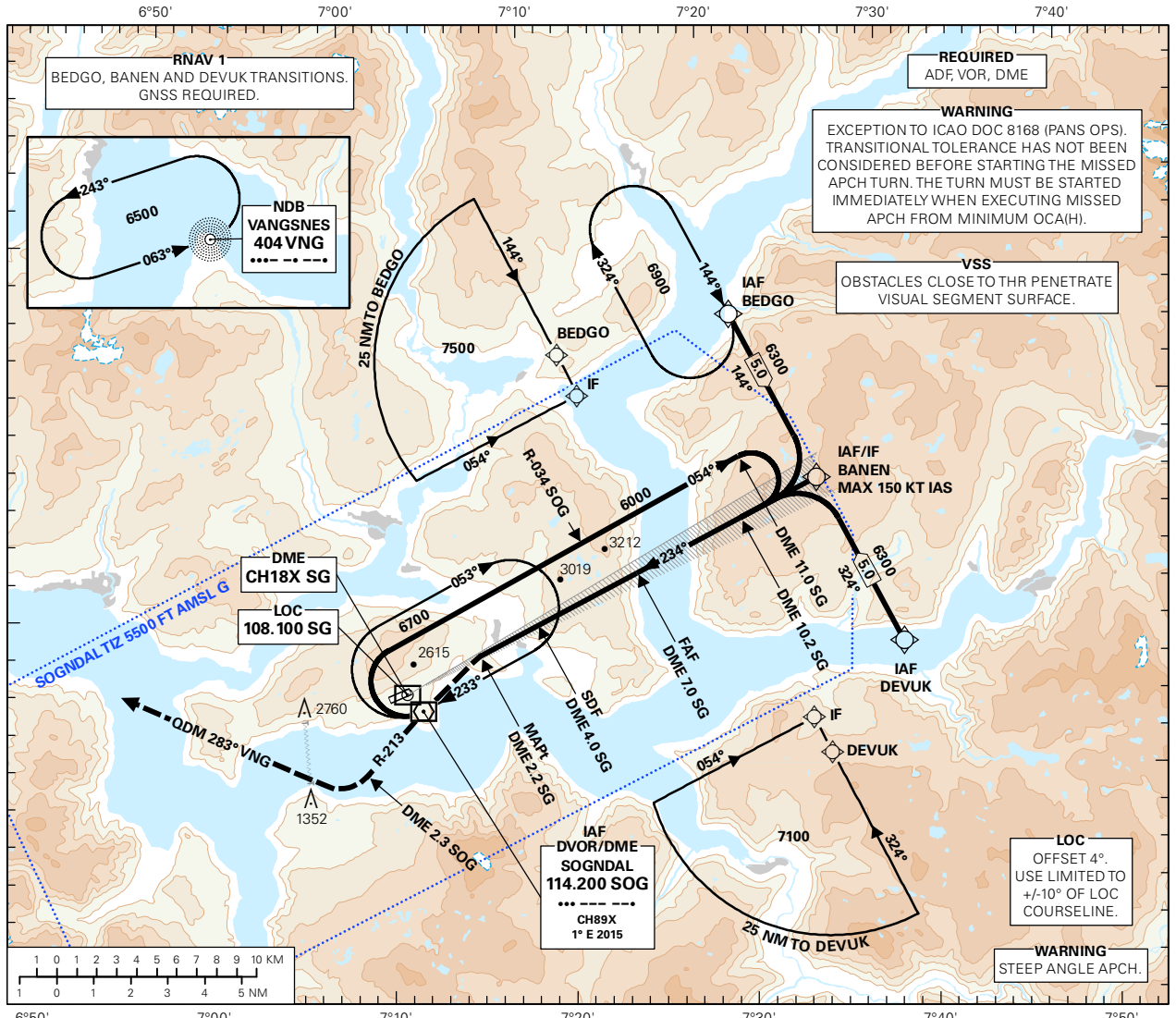


**INSTRUMENT APPROACH CHART - ICAO PLAN VIEW SCALE: 1:350 000**



AFIS: 119.300	AD ELEV: 1633		
VDF: 119.300	THR ELEV: 1633	DIST IN NM	
HGT RELATED TO THR RWY 24		ELEV, ALT AND HGT IN FT	
CIRCLING HGT RELATED TO AD ELEV			
BEARINGS ARE MAGNETIC - VAR 1.1 ° E (2015)		TRANSITION ALTITUDE 7000	

SOGNDAL  
**HAUKÅSEN**  
**LOC RWY 24**



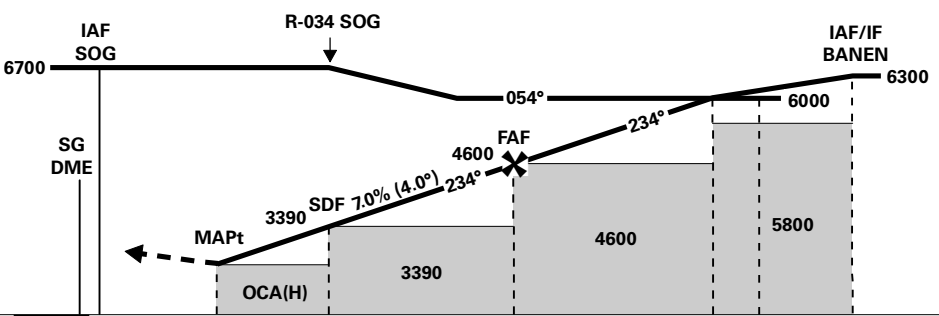
DIST TO SG	10	9	8	7	6	5	4	3
ALT (HGT)	-	-	-	4650 (3017)	4230 (2597)	3800 (2167)	3380 (1747)	2950 (1317)

PROCEDURE OFFSET: 4°

**MISSED APCH:**  
TURN LEFT IMMEDIATELY DCT SOG.  
CONTINUE ON R-213 SOG TO DME 2.3 AFTER SOG. INTERCEPT AND PROCEED ON ODM 283° VNG TO VNG. ENTER VNG HLDG CLIMBING TO 6500.

**NOTE:**  
MAX 130 KT IAS IN MISSED APCH TURN.  
NO TURN BEFORE MAPt.

STEEP ANGLE APCH (4.0°).  
GP ANGLE NOT CONSISTENT WITH PLASI (4.5°).



DME SG	0	2.2	4.0	7.0	10.2	11.0	12.5
THR	0	2.1	3.9	6.9	10.1	12.4	

CAT OF ACFT	A	B	C	D	FINAL APCH	DIST FAF - MAPt: 4.8					
	2610 (977)	-	-	-		SPEED	KT	70	90	100	120
OCA(H) STRAIGHT - IN	-	-	-	-	TIME	MIN:SEC	04:07	03:12	02:53	02:24	02:13
	2610 (977)	-	-	-	ROD	FT/MIN	500	640	710	855	925

NOTE: CIRCLING S OF AD ONLY.

CHANGES: MSA.