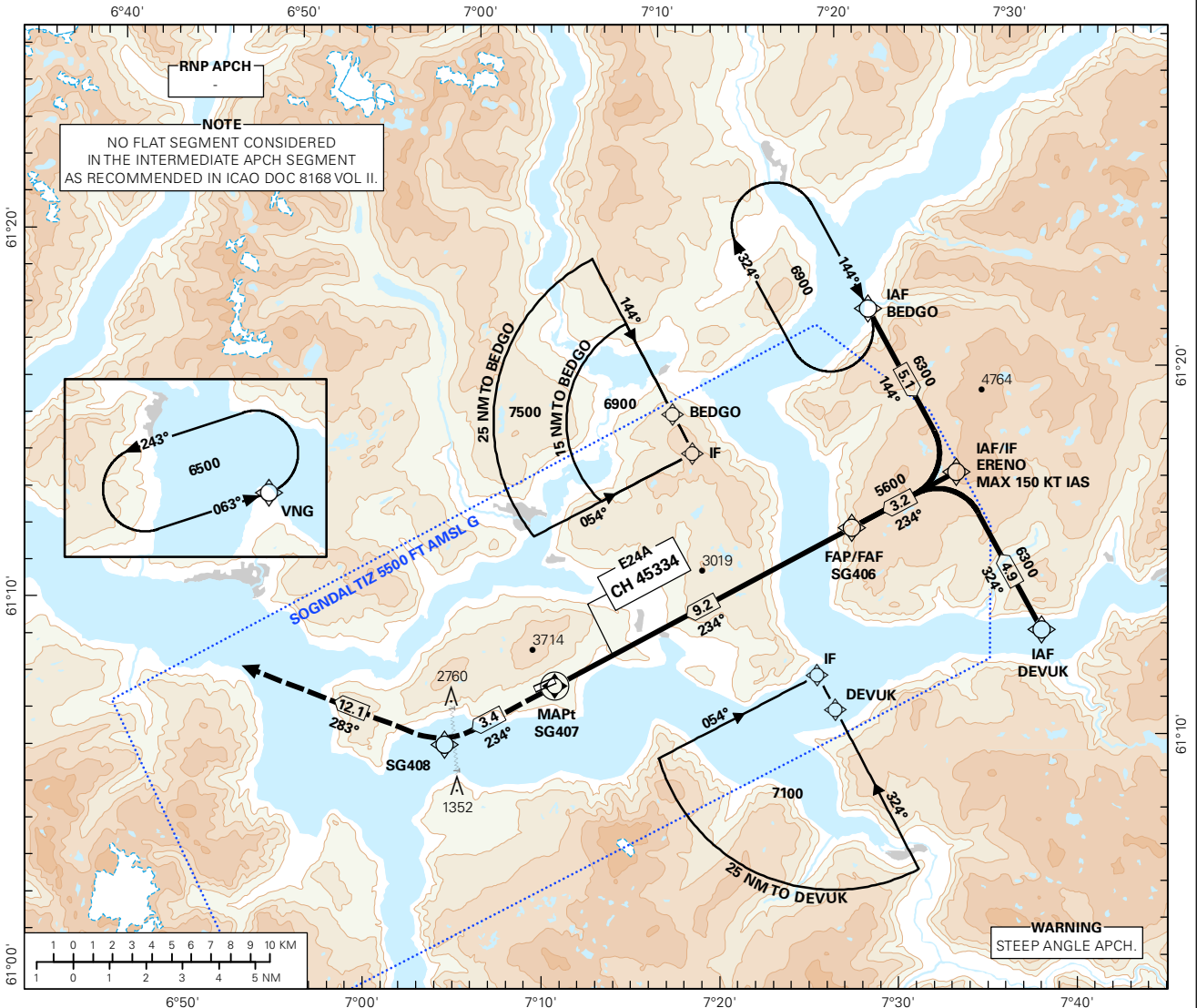


INSTRUMENT APPROACH CHART - ICAO PLAN VIEW SCALE: 1:350 000

AFIS: 119.300	AD ELEV: 1633			SOGNDAL HAUKÅSEN RNAV(GNSS) Z RWY 24 TRANSITION ALTITUDE 7000
VDF: 119.300	THR ELEV: 1633	DIST IN NM		
HGT RELATED TO THR RWY 24		ELEV, ALT AND HGT IN FT		
CIRCLING HGT RELATED TO AD ELEV				
BEARINGS ARE MAGNETIC - VAR 1.1 ° E (2015)				

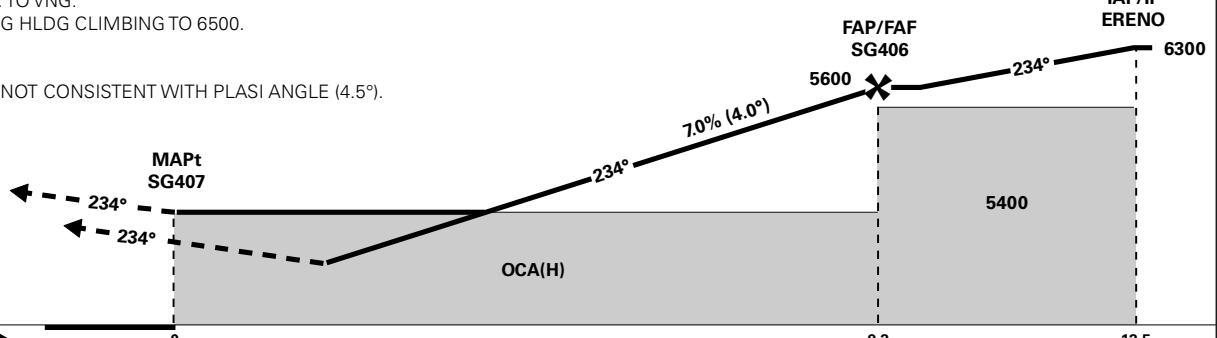


DIST TO SG407	12	11	10	9	8	7	6	5
ALT (HGT)	-	-	-	5510 (3877)	5090 (3457)	4660 (3027)	4230 (2597)	3810 (2177)

PROCEDURE OFFSET: 4°

MISSED APCH:
TO SG408. TO VNG.
ENTER VNG HLDG CLIMBING TO 6500.

NOTE:
VPA (4.0°) NOT CONSISTENT WITH PLASI ANGLE (4.5°).



CAT OF ACFT		A	B	C	D	FINAL APCH	DIST FAF - MAPt: 9.2							
OCA(H) STRAIGHT - IN	LPV (2.5%*)	3170 (1537)	3190 (1557)	-	-		SPEED	KT	70	90	100	120	130	
	LPV (3.0%*)	3120 (1487)	3130 (1497)	-	-	TIME		MIN:SEC	07:55	06:09	05:32	04:37	04:16	
	LPV (4.0%*)	3020 (1387)	3030 (1397)	-	-			ROD	FT/MIN	495	640	710	850	925
	LPV (5.0%*)	2990 (1357)	3010 (1377)	-	-									
CIRCLING	LNAV (2.5%*)	3580 (1947)	-	-	-									

NOTE: CIRCLING S OF AD ONLY. *MNM MISSED APCH CLIMB GRADIENT.

CHANGES: NEW PROCEDURE.

RECOMMENDED RNAV PROCEDURE CODING

ENSG RNAV (GNSS) Z RWY 24										
Serial Number	Path Descriptor	Waypoint Identifier	Fly-over	Course °M(°T)	MAG VAR	DIST (NM)	Turn Dir	ALT (FT)	Speed (KT)	VPA/TCH
010	IF	BEDGO	-	-	-	-	-	A6900+	-	-
020	TF	ERENO	-	-	-	5.1	-	A6300+	K150-	-
010	IF	DEVUK	-	-	-	-	-	A7100+	-	-
020	TF	ERENO	-	-	-	4.9	-	A6300+	K150-	-
010	IF	ERENO	-	-	-	-	-	A6300+	K150-	-
020	TF	SG406	-	-	-	3.2	-	A5600+	-	-
030	TF	SG407	Y	-	-	9.2	-	-	-	-4.0/15
040	TF	SG408	-	-	-	3.4	-	-	-	-
050	TF	VNG	-	-	-	12.1	-	A6500	-	-
060	HM	VNG	-	063(064.4)	-	1 MIN	L	A6500+	-	-

Note: Recommended RNAV procedure coding is based on ARINC 424-15 and is provided solely to indicate which procedure design protection areas were used in the Instrument Flight Procedure Design process.

FAS DATA BLOCK

Operation type	0	LTP/FTP ellipsoidal height	543.5
SBAS Provider	1	FPAP latitude	610849.5825N
Airport Identifier	ENSG	FPAP longitude	0070711.3520E
Runway	RW24	Threshold crossing height	15
Approach performance designator	0	TCH units	M
Route Indicator	Z	Glide path angle	4.0
Reference path data selector	0	Course width at threshold	105
Reference path Identifier	E24A	Length offset	0
LTP/FTP latitude	610920.9755N	Horizontal alert limit (HAL)	40
LTP/FTP longitude	0070844.1980E	Vertical alert limit (VAL)	35
		PRECISION APPROACH PATH CRC REMAINDER	D29521A4

NON FAS DATA BLOCK FIELDS

LTP Ortometric Height	497.6
FPAP Ortometric Height	497.6