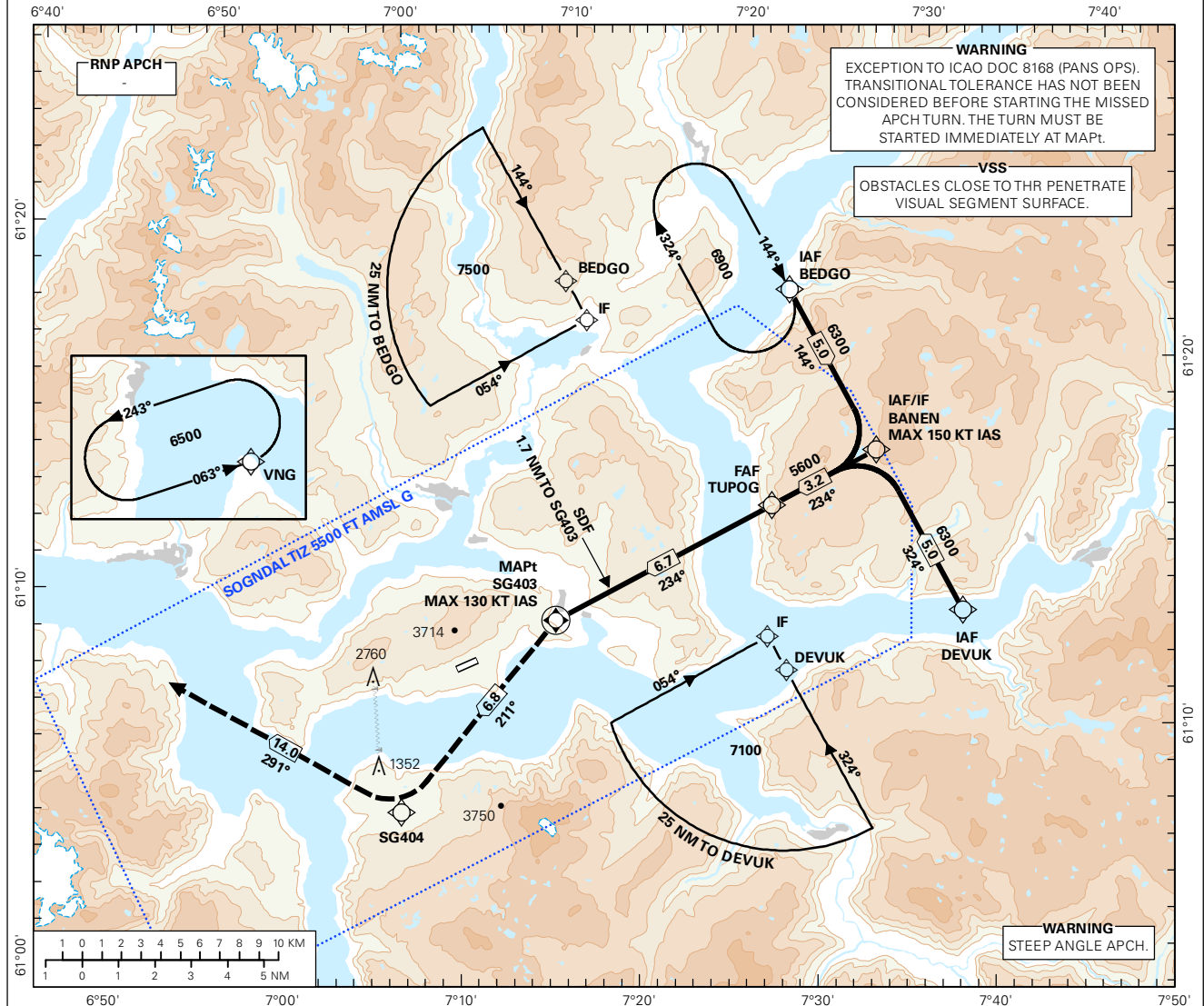


INSTRUMENT APPROACH CHART - ICAO PLAN VIEW SCALE: 1:350 000

AFIS: 119.300	AD ELEV: 1633			SOGNDAL HAUKÅSEN
VDF: 119.300	THR ELEV: 1633	DIST IN NM		
HGT RELATED TO THR RWY 24		ELEV, ALT AND HGT IN FT		RNAV(GNSS) Y RWY 24
CIRCLING HGT RELATED TO AD ELEV				
BEARINGS ARE MAGNETIC - VAR 1.1 ° E (2015)				TRANSITION ALTITUDE 7000



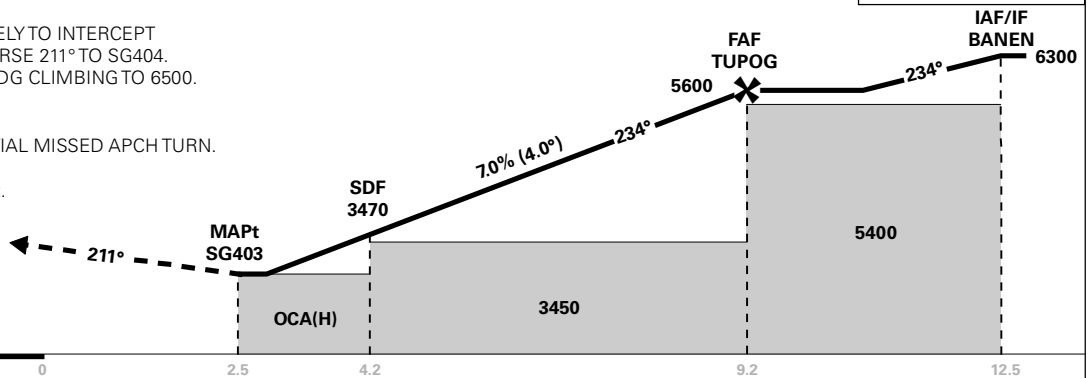
DIST TO SG403	9	8	7	6	5	4	3	2
ALT (HGT)	-	-	-	5300 (3667)	4870 (3237)	4450 (2817)	4020 (2387)	3600 (1967)

PROCEDURE OFFSET: 4°

MISSED APCH:
TURN LEFT* IMMEDIATELY TO INTERCEPT AND PROCEED ON COURSE 211° TO SG404. TO VNG. ENTER VNG HLDG CLIMBING TO 6500.

NOTE:
*MAX 130 KT IAS IN INITIAL MISSED APCH TURN.

NO TURN BEFORE MAPt.



CAT OF ACFT	OCA(H)					FINAL APCH	DIST FAF - MAPt: 6.7					
	A	B	C	D	SPEED		KT	70	90	100	120	130
STRAIGHT - IN	LNAV 2.5 %*	3450 (1817)	-	-	-	TIME	05:46	04:29	04:02	03:22	03:07	
	LNAV 3.0 %*	3360 (1727)	-	-	-		MIN:SEC	05:46	04:29	04:02	03:22	03:07
	LNAV 4.0 %*	3180 (1547)	-	-	-		ROD	495	640	710	850	920
	LNAV 5.0 %*	3000 (1367)	-	-	-							
	LNAV 7.0 %*	2770 (1137)	-	-	-							
CIRCLING	3450 (1817)	-	-	-								

NOTE: CIRCLING S OF AD ONLY. *MNM MISSED APCH CLIMB GRADIENT.

CHANGES: PROCEDURE NAME, EDITORIALS.

RECOMMENDED RNAV PROCEDURE CODING

ENSG RNAV (GNSS) Y RWY 24										
Serial Number	Path Descriptor	Waypoint Identifier	Fly-over	Course °M(°T)	MAG VAR	DIST (NM)	Turn Dir	ALT (FT)	Speed (KT)	VPA/TCH
010	IF	BEDGO	-	-	-	-	-	A6900+	-	-
020	TF	BANEN	-	-	-	5.0	-	A6300+	K150-	-
010	IF	DEVUK	-	-	-	-	-	A7100+	-	-
020	TF	BANEN	-	-	-	5.0	-	A6300+	K150-	-
010	IF	BANEN	-	-	-	-	-	A6300+	K150-	-
020	TF	TUPOG	-	-	-	3.2	-	A5600+	-	-
030	TF	SG403	Y	-	-	6.7	-	-	K130-	-4.0/15
040	CF	SG404	-	211(211.9)	-	-	-	-	-	-
050	TF	VNG	-	-	-	14.0	-	A6500	-	-
060	HM	VNG	-	063(064.4)	-	1 MIN	L	A6500+	-	-

Note: Recommended RNAV procedure coding is based on ARINC 424-15 and is provided solely to indicate which procedure design protection areas were used in the Instrument Flight Procedure Design process.