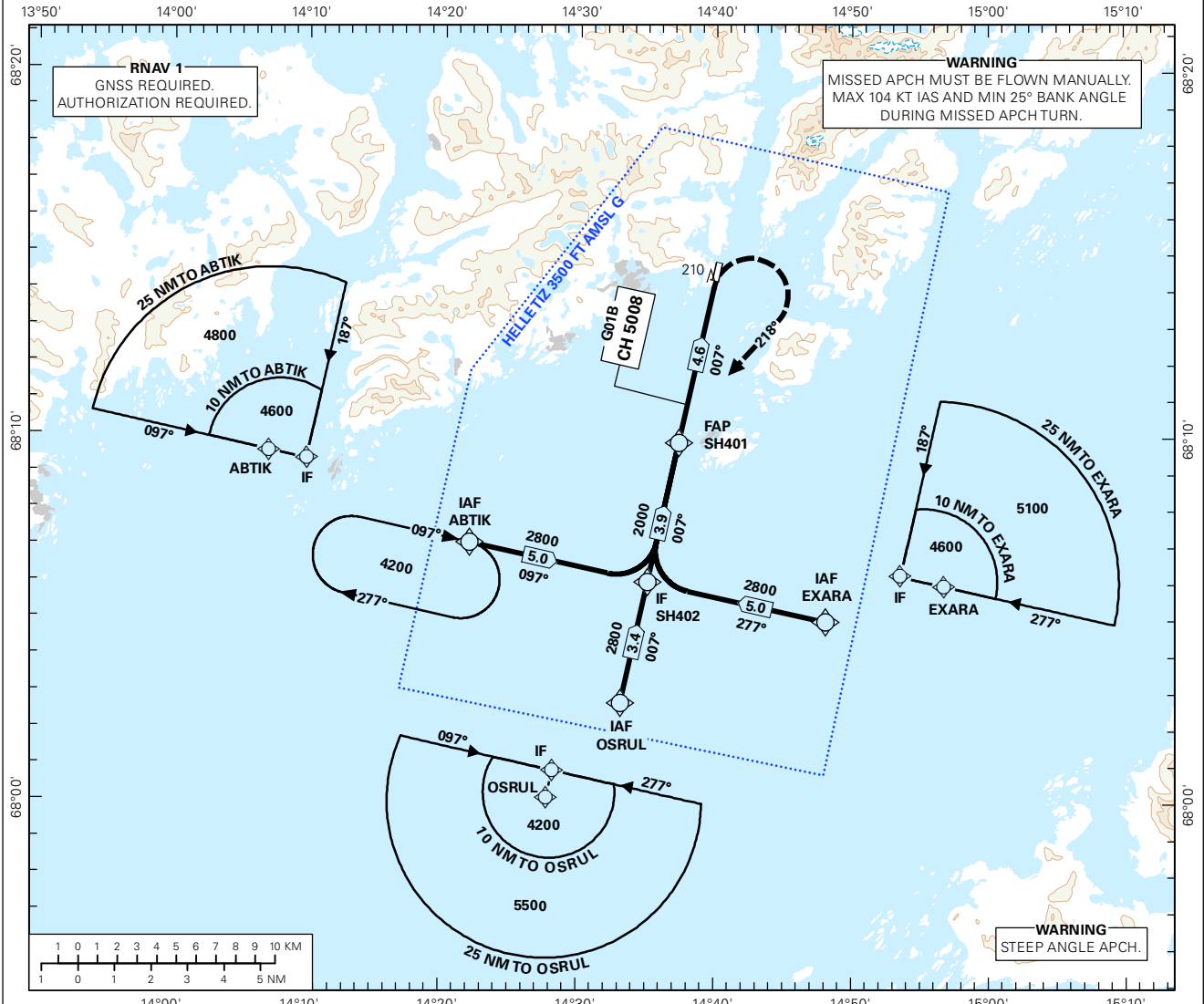
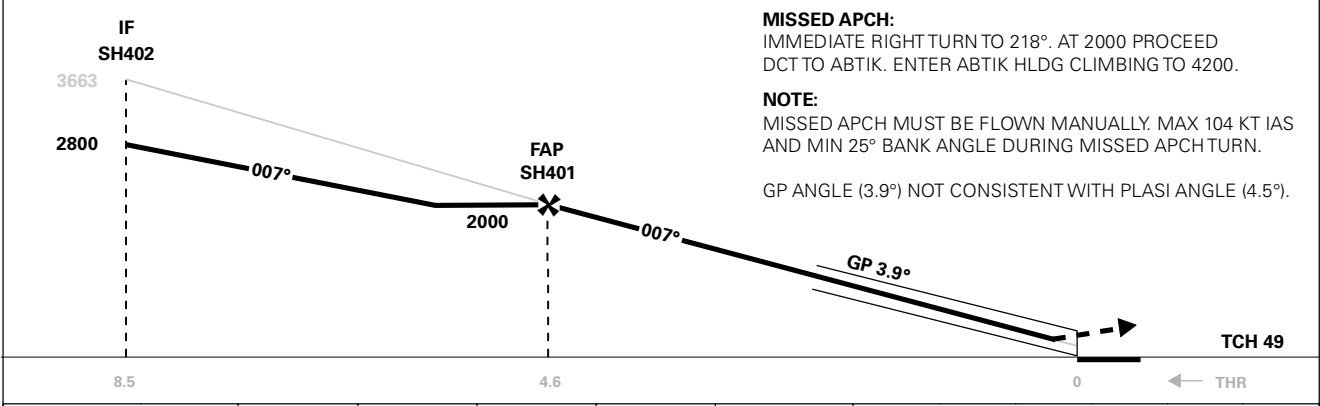


INSTRUMENT APPROACH CHART - ICAO PLAN VIEW SCALE: 1:350 000

APP: 126.450	AD ELEV: 29			SVOLVÆR HELLE GLS RWY 01 TRANSITION ALTITUDE 7000
AFIS: 120.200	THR ELEV: 29	DIST IN NM		
VDF: 120.200	HGT RELATED TO THR RWY 01	ELEV, ALT AND HGT IN FT		
CIRCLING HGT RELATED TO AD ELEV				
BEARINGS ARE MAGNETIC - VAR 5.3 ° E (2015)				



DIST TO THR	9	8	7	6	5	4	3	2
ALT (HGT)	-	-	-	-	-	1749 (1720)	1329 (1300)	910 (881)



MISSED APCH:
 IMMEDIATE RIGHT TURN TO 218°. AT 2000 PROCEED DCT TO ABTIK. ENTER ABTIK HLDG CLIMBING TO 4200.

NOTE:
 MISSED APCH MUST BE FLOWN MANUALLY. MAX 104 KT IAS AND MIN 25° BANK ANGLE DURING MISSED APCH TURN.

GP ANGLE (3.9°) NOT CONSISTENT WITH PLASI ANGLE (4.5°).

CAT OF ACFT	A	B	C	D	FINAL APCH	DIST FAP - THR: 4.6					
	529 (500)					SPEED	KT	70	90	100	120
OCA(H)	-	-	-	-	TIME	MIN:SEC	-	-	-	-	-
SCAT-I	-	-	-	-	ROD	FT/MIN	485	620	690	830	900
CIRCLING	540 (511)	2030 (2001)	-	-	NOTE: CIRCLING E OF AD ONLY.						

CHANGES: UNBOX RENAMED EXARA, EDITORIALS.

SCAT-I: Special CAT-I, REF AIP Norge, GEN 1.5 and AD 1.1 paragraf 6.3

Det kreves spesiell godkjenning fra Luftfartstilsynet for å kunne bruke SCAT-I prosedyrer operativt.

Beslutningshøyder (DH) under 400 FT skal ikke brukes.

GLS VHF-data sendes på FREQ 114.800 MHZ

Under planlegging av en GLS presisjonsinnflyging skal piloter kontrollere at prosedyren vil være tilgjengelig. Mangel på GPS-signal og feil ved bakkestasjonen vil bli publisert ved bruk av NOTAM. Tekst som benyttes ved varslet mangelfull GNSS-dekning vil være "SCAT-I GPS OUTAGE PREDICTED".

Meldepunkt-kordinater er publisert i ENR 4.4

SCAT-I: Special CAT-I, REF AIP Norway, GEN 1.5 and AD 1.1 paragraph 6.3

Special authorization from the Norwegian Civil Aviation Authority is required prior to operational use of SCAT-I procedures.

Decision heights (DH) below 400 FT shall not be used.

GLS VHF data is transmitted on FREQ 114.800 MHZ.

When planning a GLS precision approach pilots shall check the availability of the instrument approach procedure. Predicted GPS outages and ground station irregularities will be published using NOTAM. Text used when insufficient GNSS coverage has been predicted will be "SCAT-I GPS OUTAGE PREDICTED".

Waypoint coordinates are published in ENR 4.4