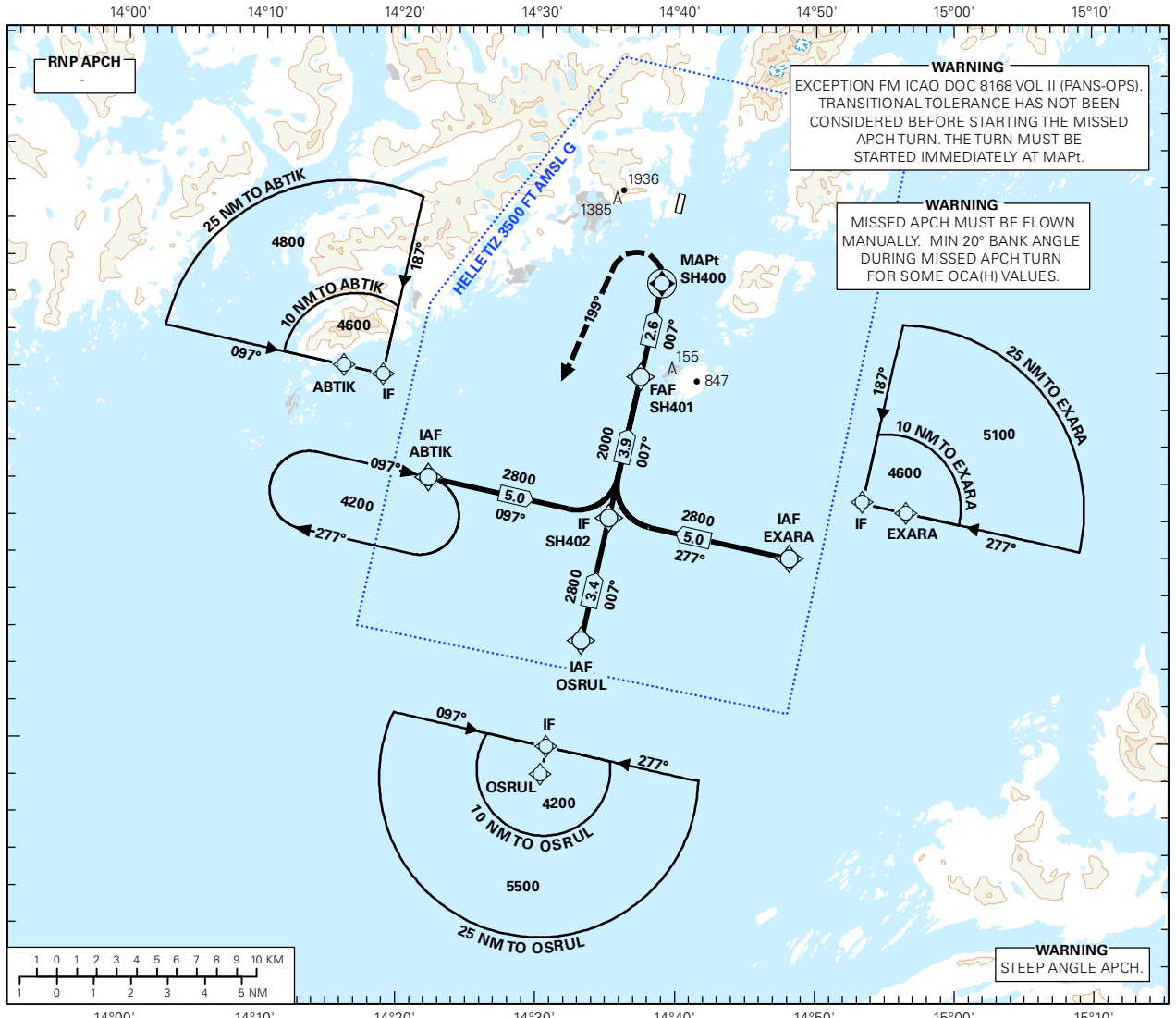
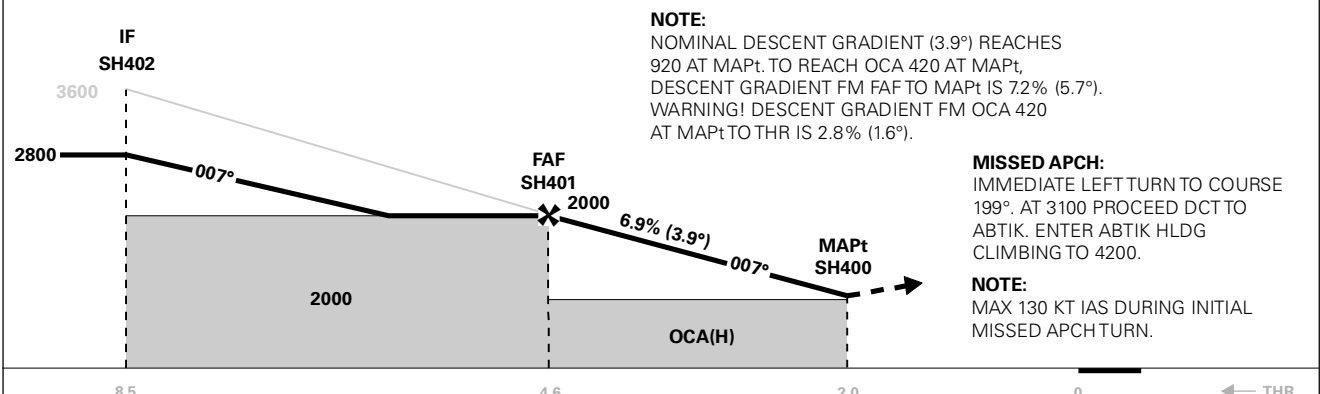


INSTRUMENT APPROACH CHART - ICAO PLAN VIEW SCALE: 1:350 000

APP: 126.450	AD ELEV: 29			SVOLVÆR HELLE RNAV(GNSS) Z RWY 01 TRANSITION ALTITUDE 7000
AFIS: 120.200	THR ELEV: 29	DIST IN NM		
VDF: 120.200	HGT RELATED TO THR RWY 01	ELEV, ALT AND HGT IN FT		
CIRCLING HGT RELATED TO AD ELEV				
BEARINGS ARE MAGNETIC - VAR 5.3 ° E (2015)				



DIST TO SH400	8	7	6	5	4	3	2	1
ALT (HGT)	-	-	-	-	-	-	1760 (1731)	1350 (1321)



CAT OF ACFT	A	B	C	D	FINAL APCH	DIST FAF - MAPt: 2.6						
						SPEED	KT	70	90	100	120	130
OCA(H) STRAIGHT - IN	2.5%*	1290 (1261)	1900 (1871)	-	-	TIME	MIN:SEC	02:14	01:44	01:34	01:18	01:12
	4.0%*	1190 (1161)	1810 (1781)	-	-	ROD	FT/MIN	480	620	690	825	895
CIRCLING	2.5%*	420 (391)**	1310 (1281)**	-	-							
		1290 (1261)	2030 (2001)	-	-							

NOTE: CIRCLING E OF AD ONLY. *MNM MISSED APCH CLIMB GRADIENT. **MNM 20° BANK ANGLE DURING INITIAL MISSED APCH TURN.

CHANGES: UNBOX RENAMED EXARA, EDITORIALS.

RECOMMENDED RNAV PROCEDURE CODING

ENSH RNAV(GNSS) Z RWY 01													
SN	PD	WI	Fly-over	°M (°T)	MAG VAR	DIST (NM)	REC NAV AID	TD	ALT (FT)	Speed (KT)	VPA/TCH	ARC CENTRE RADIUS (NM)	NAV SPEC
010	IF	ABTIK	-	-	-	-	-	-	A4600+	-	-	-	RNP APCH
020	TF	SH402	-	-	-	5.0	-	-	A2800+	-	-	-	RNP APCH
010	IF	OSRUL	-	-	-	-	-	-	A4200+	-	-	-	RNP APCH
020	TF	SH402	-	-	-	3.4	-	-	A2800+	-	-	-	RNP APCH
010	IF	EXARA	-	-	-	-	-	-	A4600+	-	-	-	RNP APCH
020	TF	SH402	-	-	-	5.0	-	-	A2800+	-	-	-	RNP APCH
030	TF	SH401	-	-	-	3.9	-	-	A2000	-	-	-	RNP APCH
040	TF	SH400	Y	-	-	2.6	-	-	-	-	-	-	RNP APCH
050	CA	-	-	199 (204.4)	-	-	-	-	A3100	-	-	-	RNP APCH
060	DF	ABTIK	-	-	-	-	-	-	A4200	-	-	-	RNP APCH
070	HM	ABTIK	-	097 (102.2)	-	1 MIN	-	R	A4200+	-	-	-	RNP APCH

Note: Recommended RNAV procedure coding is based on ARINC 424-15 and is provided solely to indicate which procedure design protection areas were used in the Instrument Flight Procedure Design process.