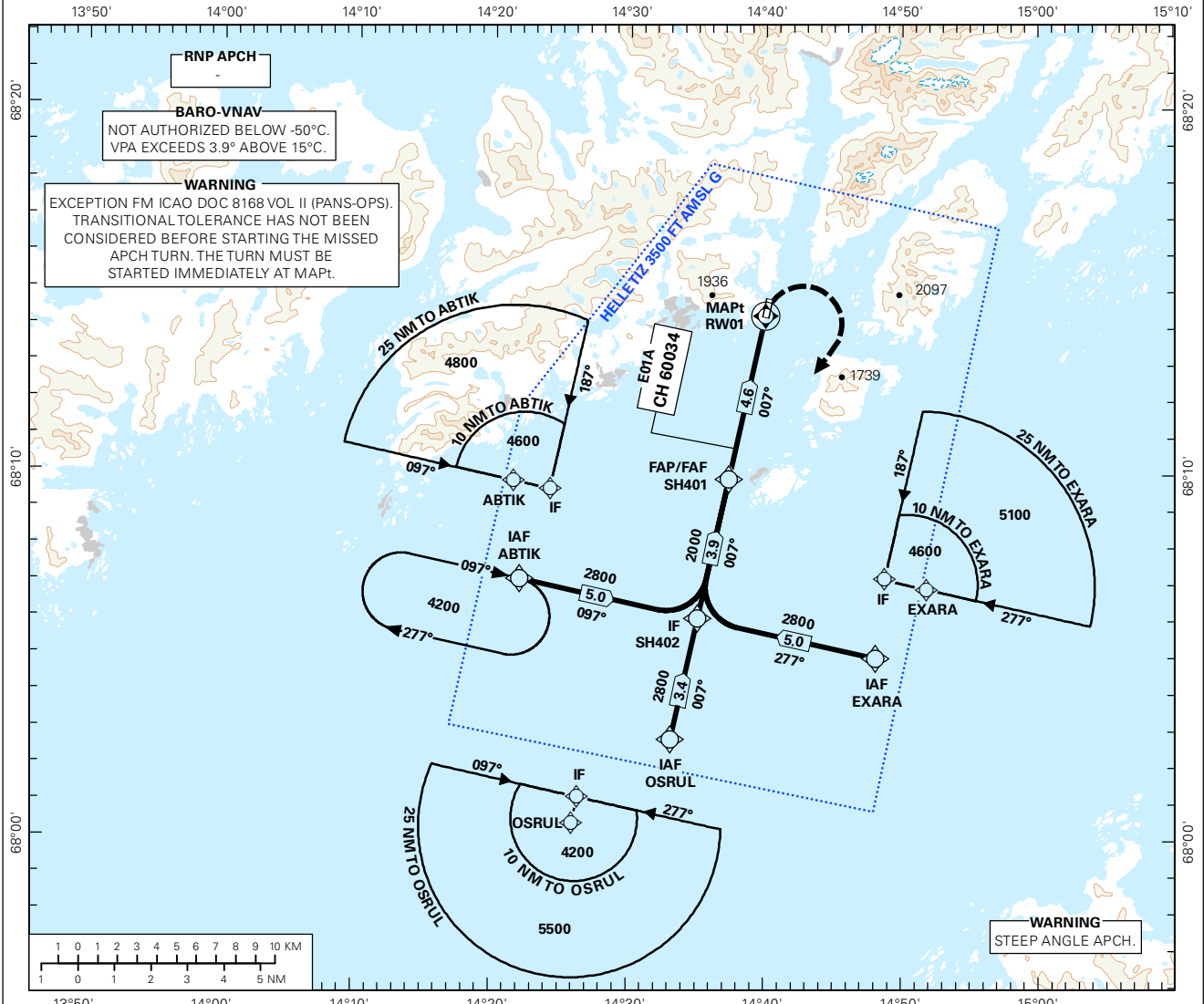
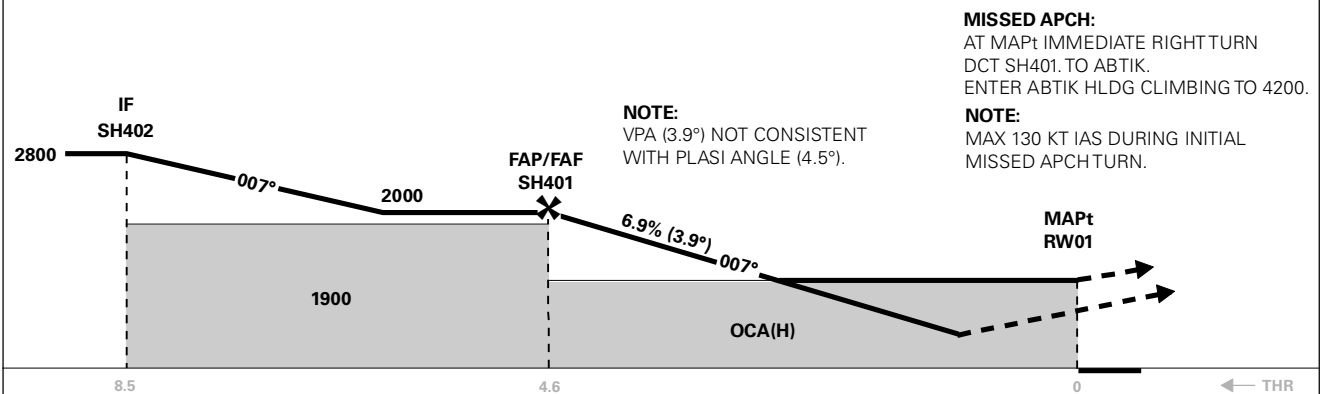


INSTRUMENT APPROACH CHART - ICAO PLAN VIEW SCALE: 1:350 000

APP: 126.450	AD ELEV: 29			SVOLVÆR HELLE RNAV(GNSS) Y RWY 01 TRANSITION ALTITUDE 7000
AFIS: 120.200	THR ELEV: 29	DIST IN NM		
VDF: 120.200	HGT RELATED TO THR RWY 01	ELEV, ALT AND HGT IN FT		
CIRCLING HGT RELATED TO AD ELEV				
BEARINGS ARE MAGNETIC - VAR 5.3 ° E (2015)				



DIST TO RW01	10	9	8	7	6	5	4	3
ALT (HGT)	-	-	-	-	-	-	1760 (1731)	1340 (1311)



CAT OF ACFT	A				B				C				D				FINAL APCH	DIST FAF - MAPt: 4.6					
	1	2	3	4	1	2	3	4	1	2	3	4	1	2	3	4		SPEED	KT	70	90	100	120
OCA(H) STRAIGHT - IN	LPV 2.5%*	1480 (1451)	1550 (1521)	-	-	-	-	-	-	-	-	-	-	-	-	-	TIME	MIN:SEC	03:57	03:04	02:46	02:18	02:08
	LPV 4.0%*	1300 (1271)	1320 (1291)	-	-	-	-	-	-	-	-	-	-	-	-	-	ROD	FT/MIN	490	630	700	840	905
	LPV 5.0%*	1180 (1151)	1200 (1171)	-	-	-	-	-	-	-	-	-	-	-	-	-							
	LNAV/VNAV 2.5%*	1470 (1441)	1540 (1511)	-	-	-	-	-	-	-	-	-	-	-	-	-							
CIRCLING	LNAV/VNAV 4.0%*	1240 (1211)	1250 (1221)	-	-	-	-	-	-	-	-	-	-	-	-								
	LNAV/VNAV 5.0%*	1110 (1081)	1130 (1101)	-	-	-	-	-	-	-	-	-	-	-	-								
	LNAV 2.5%*	1690 (1661)	1870 (1841)	-	-	-	-	-	-	-	-	-	-	-	-								
	LNAV 5.0%*	1470 (1441)	1530 (1501)	-	-	-	-	-	-	-	-	-	-	-	-								
	CIRCLING	1690 (1661)	2030 (2001)	-	-	-	-	-	-	-	-	-	-	-	-								

NOTE: CIRCLING E OF AD ONLY. *MNM MISSED APCH CLIMB GRADIENT.

CHANGES: UNBOX RENAMED EXARA, EDITORIALS.

RECOMMENDED RNAV PROCEDURE CODING

ENSH RNAV(GNSS) Y RWY 01													
SN	PD	WI	Fly-over	M (°T)	MAG VAR	DIST (NM)	REC NAV AID	TD	ALT (FT)	Speed (KT)	VPA/TCH	ARC CENTRE RADIUS (NM)	NAV SPEC
010	IF	ABTIK	-	-	-	-	-	-	A4600+	-	-	-	RNP APCH
020	TF	SH402	-	-	-	5.0	-	-	A2800+	-	-	-	RNP APCH
010	IF	OSRUL	-	-	-	-	-	-	A4200+	-	-	-	RNP APCH
020	TF	SH402	-	-	-	3.4	-	-	A2800+	-	-	-	RNP APCH
010	IF	EXARA	-	-	-	-	-	-	A4600+	-	-	-	RNP APCH
020	TF	SH402	-	-	-	5.0	-	-	A2800+	-	-	-	RNP APCH
030	TF	SH401	-	-	-	3.9	-	-	A2000	-	-	-	RNP APCH
040	TF	RW01	Y	-	-	4.6	-	-	-	-	-3.9/15	-	RNP APCH
050	DF	SH401	-	-	-	-	-	R	-	K130-	-	-	RNP APCH
060	TF	ABTIK	-	-	-	-	-	-	A4200	-	-	-	RNP APCH
070	HM	ABTIK	-	097 (102.2)	-	1 MIN	-	R	A4200+	-	-	-	RNP APCH

Note: Recommended RNAV procedure coding is based on ARINC 424-15 and is provided solely to indicate which procedure design protection areas were used in the Instrument Flight Procedure Design process.

Note: The use of SBAS/GNSS geometric altitude as a source of altitude for approaches to LNAV/VNAV minima is permitted only for aircraft specifically certified for this type of operation. See "EASA-CM-AS-002 Clarifications to AMC 20-27" for additional information.

Note: Published OCA(H) values are obstacle clearance values. Decision heights (DH) below 250 FT shall not be used due to APV approach operation Type A limitations.

FAS DATA BLOCK

Operation type	0	LTP/FTP ellipsoidal height	43.0
SBAS Provider	1	FPAP latitude	681514.0780N
Airport Identifier	ENSH	FPAP longitude	0144031.0175E
Runway	RW01	Threshold crossing height	15
Approach performance designator	0	TCH units	M
Route Indicator	Y	Glide path angle	3.9
Reference path data selector	0	Course width at threshold	105
Reference path Identifier	E01A	Length offset	824
LTP/FTP latitude	681420.6630N	Horizontal alert limit (HAL)	40
LTP/FTP longitude	0143959.1550E	Vertical alert limit (VAL)	50
		PRECISION APPROACH PATH CRC REMAINDER	8C521FCD

NON FAS DATA BLOCK FIELDS

LTP Ortometric Height	8.7
FPAP Ortometric Height	8.7