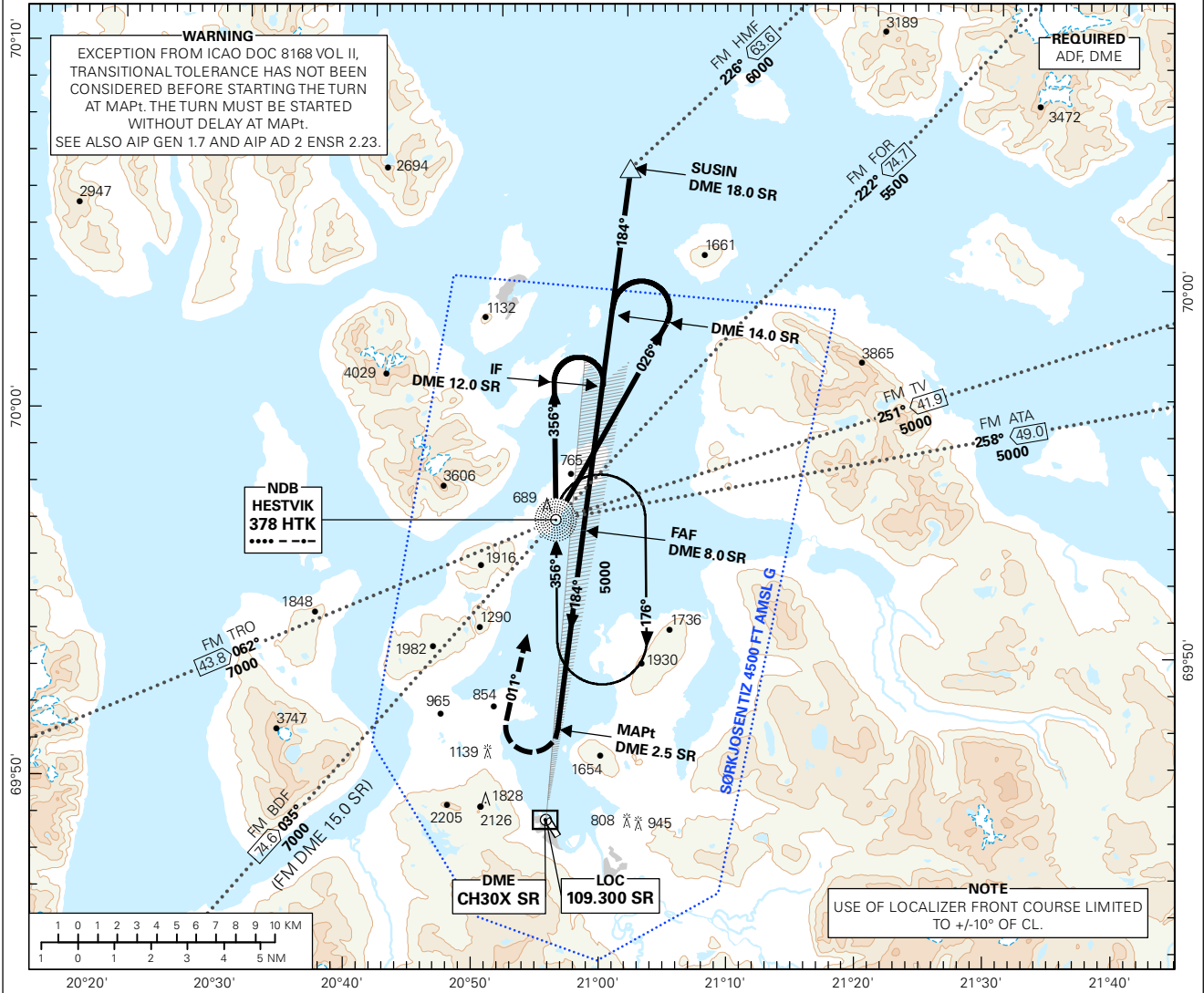


INSTRUMENT APPROACH CHART - ICAO PLAN VIEW SCALE: 1:350 000

SØRKJOSEN
SØRKJOSEN
LOC-B

<p>MSA 25 NM HTK</p>	AFIS: 119.600	AD ELEV: 16	DIST IN NM	ELEV, ALT AND HGT IN FT	TRANSITION ALTITUDE 7000
	VDF: 119.600				
CIRCLING HGT RELATED TO AD ELEV			BEARINGS ARE MAGNETIC - VAR 9.2 ° E (2015)		

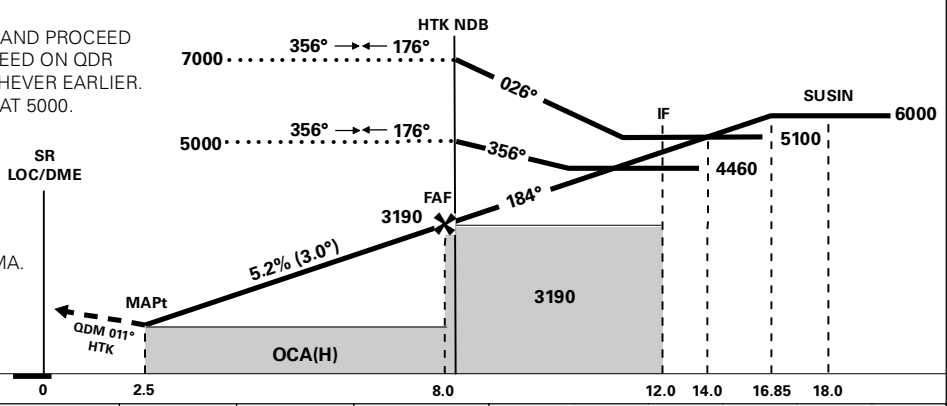


DIST TO SR	10	9	8	7	6	5	4	3
ALT (HGT)	-	-	-	2870 (2854)	2550 (2534)	2220 (2204)	1910 (1894)	1590 (1574)

MISSED APCH:
IMMEDIATE RIGHT TURN* TO INTERCEPT AND PROCEED ON ODM 011° HTK TO HTK. FM HTK PROCEED ON QDR 011° HTK TO 5000 OR DME 18.0 SR, WHICHEVER EARLIER. TURN RIGHT DCT HTK. ENTER HTK HLDG AT 5000.

*MISSED APCH TURN LIMITED TO:
CAT A: 100 KT IAS
CAT B: 130 KT IAS

NOTE:
DESCENT GRADIENT CALCULATED FM FAF TO MAPt. BASED ON CAT A MINIMA.



DME (SR)	0	2.5	8.0	12.0	14.0	16.85	18.0				
CAT OF ACFT	A	B	C	D	FINAL APCH						
OCA(H) STRAIGHT - IN	-	-	-	-	DIST FAF - MAPt: 5.5						
CIRCLING	2.5%*	1430 (1414)	1970 (1954)	-	SPEED	KT	70	90	100	120	130
	4.0%*	-	1660 (1644)**	-	TIME	MIN:SEC	04:43	03:40	03:18	02:45	02:33
	5.0%*	-	1610 (1594)**	-	ROD	FT/MIN	375	480	535	640	695

NOTE: CIRCLING NE OF AD ONLY. *MNM MISSED APCH CLIMB GRADIENT. **AUTH REQUIRED: 120KT/25° BANK WHILE CIRCLING.

CHANGES: MAG VAR, EDITORIALS.