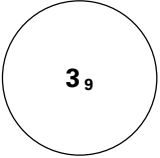
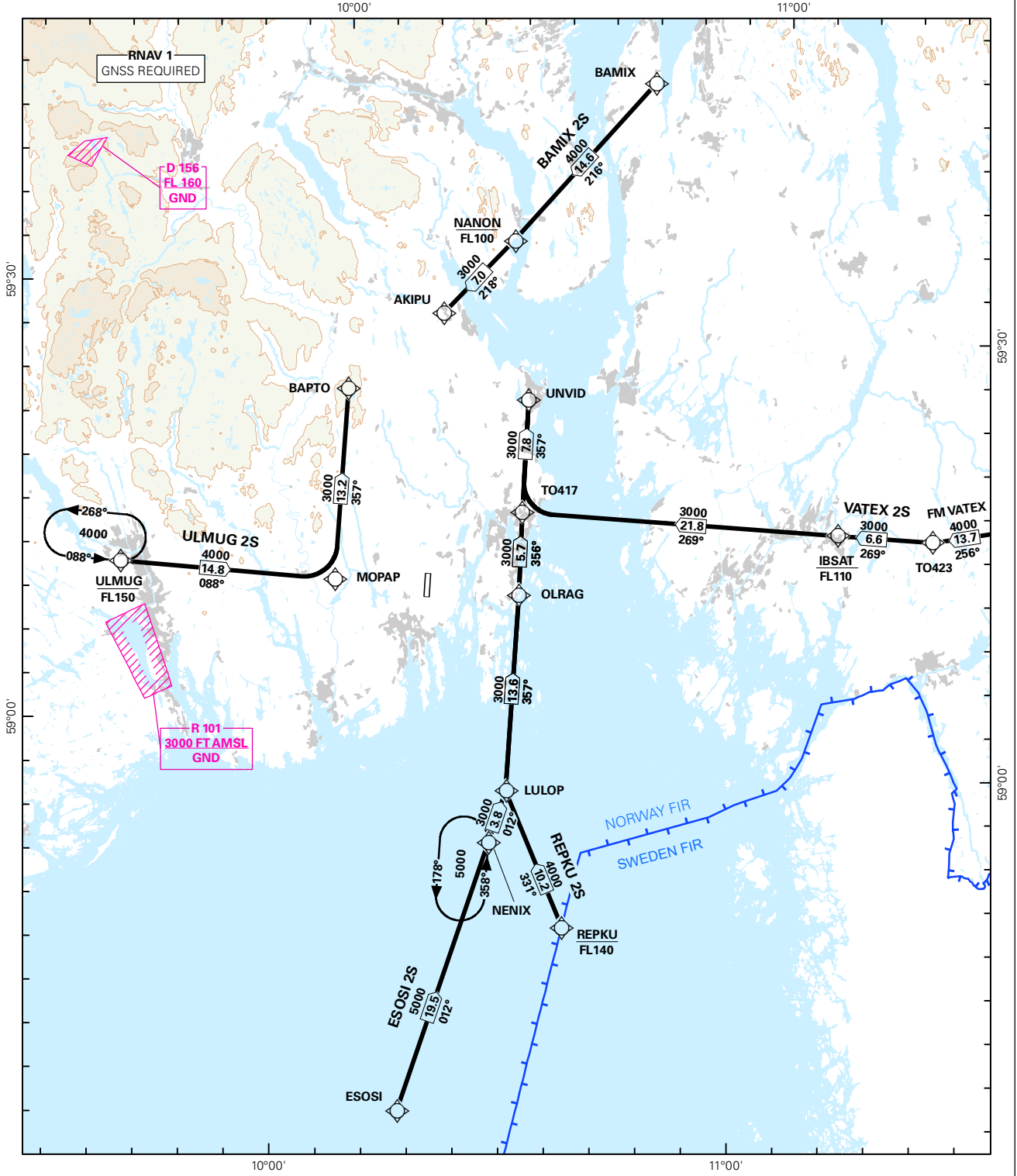


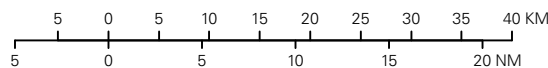
STANDARD ARRIVAL CHART INSTRUMENT (RNAV 1 STAR BASED ON GNSS)

 <p>MSA 25 NM ARP</p>	ATIS: 119.075	ALT AND ELEV ARE IN FT DIST IN NM		<p>SANDEFJORD/TORP</p> <p>RWY 18</p> <p>NORWAY</p>
	APP: 134.050 124.350			
	TWR: 118.650			
	GND: 118.650			
	1:750 000	VAR: 2.5 ° E (2015)	TA 7000	
BAMIX 2S, ESOSI 2S, REPKU 2S, ULMUG 2S, VATEX 2S				



STAR DESCRIPTION OVERLEAF
DESCRIPTION OF WAYPOINTS, REF ENR 4.4

ATS AIRSPACE CLASSIFICATIONS: REF ENR 1.4
LEGEND: REF GEN 2.3



CHANGES: VDF REMOVED, EDITORIALS.

**STANDARD ARRIVAL ROUTES - INSTRUMENT
(RNAV 1 STAR BASED ON GNSS)**
**SANDEFJORD/Torp
RWY 18**

GENERAL: Surveillance service shall be available.

LOSS OF RNAV 1 CAPABILITY: Request vectoring.

VECTORING: Vectoring may be used for sequencing.

RADIO COMMUNICATION FAILURE: Squawk A7600. Proceed on STAR and make APCH to RWY 18

DESIGNATOR	ROUTE	RESTRICTIONS	DESCEND	CLEARANCE LIMIT
BAMIX 2S (BAMIX TWO SIERRA ARRIVAL)	From BAMIX, to NANON, to AKIPU.	Cross NANON between FL100 and 4000 FT. Cross AKIPU at or above 3000 FT.	As cleared by ATC.	AKIPU
ESOSI 2S (ESOSI TWO SIERRA ARRIVAL)	From ESOSI, to NENIX, to LULOP, to OLRAG, to TO417, to UNVID.	Cross NENIX at or above 5000 FT. Cross UNVID at or above 3000 FT.	As cleared by ATC.	UNVID
REPKU 2S (REPKU TWO SIERRA ARRIVAL)	From REPKU, to LULOP, to OLRAG, to TO417, to UNVID.	Cross REPKU at or below FL140. Cross LULOP at or above 4000 FT. Cross UNVID at or above 3000 FT.	As cleared by ATC.	UNVID
ULMUG 2S (ULMUG TWO SIERRA ARRIVAL)	From ULMUG, to MOPAP, turn left to BAPTO.	Cross ULMUG at or below FL150. Cross MOPAP at or above 4000 FT. Cross BAPTO at or above 3000 FT.	As cleared by ATC.	BAPTO
VATEX 2S (VATEX TWO SIERRA ARRIVAL)	From VATEX, to TO423, to IBSAT, to TO417, to UNVID.	Cross TO423 at or above 4000 FT. Cross IBSAT between FL110 and 3000 FT. Cross UNVID at or above 3000 FT.	As cleared by ATC.	UNVID