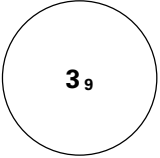
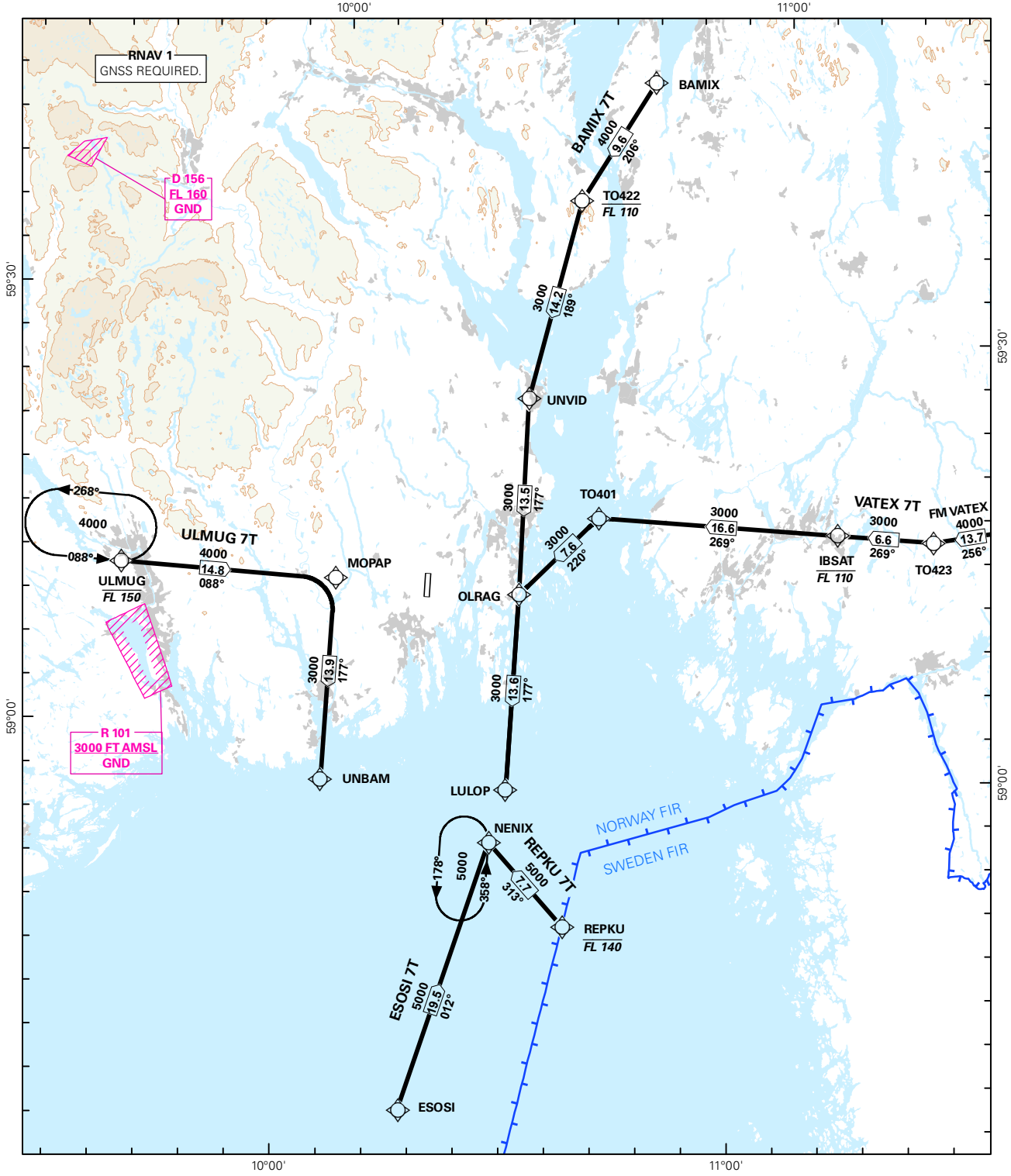


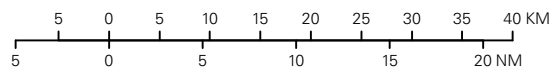
STANDARD ARRIVAL CHART INSTRUMENT (RNAV 1 STAR BASED ON GNSS)

 <p>MSA 25 NM ARP</p>	ATIS: 119.075	ALT AND ELEV ARE IN FT DIST IN NM		<p>SANDEFJORD/TORP RWY 36 NORWAY</p>	
	APP: 134.050 124.350				
	TWR: 118.650	1:750 000	VAR: 2.5 ° E (2015)		TA 7000
	GND: 118.650	BAMIX 7T, ESOSI 7T, REPKU 7T, ULMUG 7T, VATEX 7T			



STAR DESCRIPTION OVERLEAF
DESCRIPTION OF WAYPOINTS, REF ENR 4.4

ATS AIRSPACE CLASSIFICATIONS: REF ENR 1.4
LEGEND: REF GEN 2.3



CHANGES: VDF REMOVED, EDITORIALS.

**STANDARD ARRIVAL ROUTES -
INSTRUMENT
(RNAV 1 STAR BASED ON GNSS)**
**SANDEFJORD/Torp
RWY 36**
GENERAL: Surveillance service shall be available.

**LOSS OF RNAV 1
CAPABILITY:** Request vectoring.

VECTORING: Vectoring may be used for sequencing.

**RADIO COMMUNICATION
FAILURE:** Squawk A7600. Proceed on STAR and make APCH to RWY 36

DESIGNATOR	ROUTE	RESTRICTIONS	DESCEND	CLEARANCE LIMIT
BAMIX 7T (BAMIX SEVEN TANGO ARRIVAL)	From BAMIX, to TO422, to UNVID, to OLRAG, to LULOP.	Cross TO422 between FL110 and 4000 FT. Cross LULOP at or above 3000 FT.	As cleared by ATC.	LULOP
ESOSI 7T (ESOSI SEVEN TANGO ARRIVAL)	From ESOSI, to NENIX.	Cross NENIX at or above 5000 FT.	As cleared by ATC.	NENIX
REPKU 7T (REPKU SEVEN TANGO ARRIVAL)	From REPKU, to NENIX.	Cross REPKU at or below FL140. Cross NENIX at or above 5000 FT.	As cleared by ATC.	NENIX
ULMUG 7T (ULMUG SEVEN TANGO ARRIVAL)	From ULMUG, to MOPAP, turn right to UNBAM.	Cross ULMUG at or below FL150. Cross MOPAP at or above 4000 FT. Cross UNBAM at or above 3000 FT.	As cleared by ATC.	UNBAM
VATEX 7T (VATEX SEVEN TANGO ARRIVAL)	From VATEX, to TO423, to IBSAT, to TO401, to OLRAG, to LULOP.	Cross TO423 at or above 4000 FT. Cross IBSAT between FL110 and 3000 FT. Cross LULOP at or above 3000 FT.	As cleared by ATC.	LULOP