

INSTRUMENT APPROACH CHART - ICAO PLAN VIEW SCALE: 1:550 000

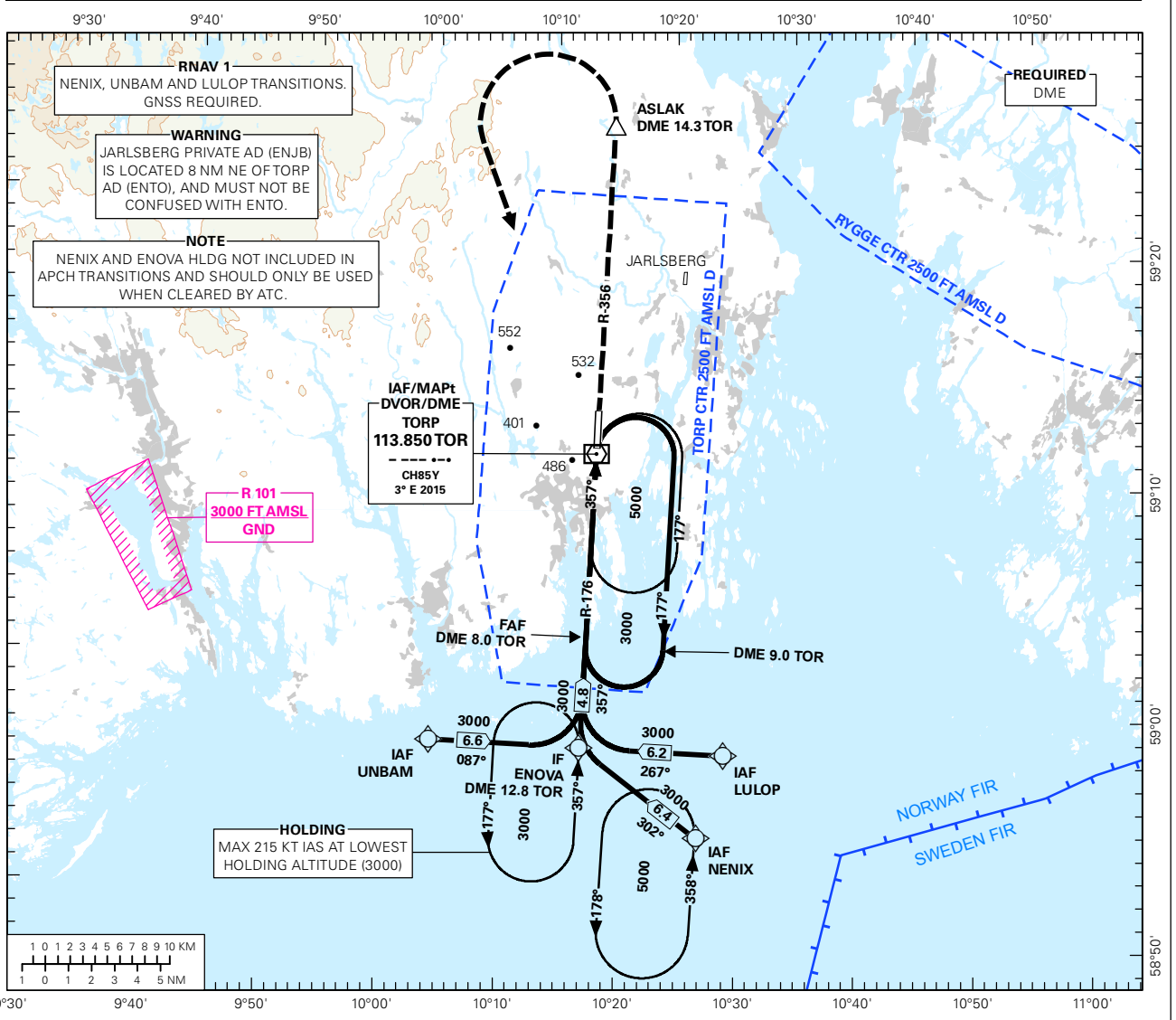
SANDEFJORD

TORP

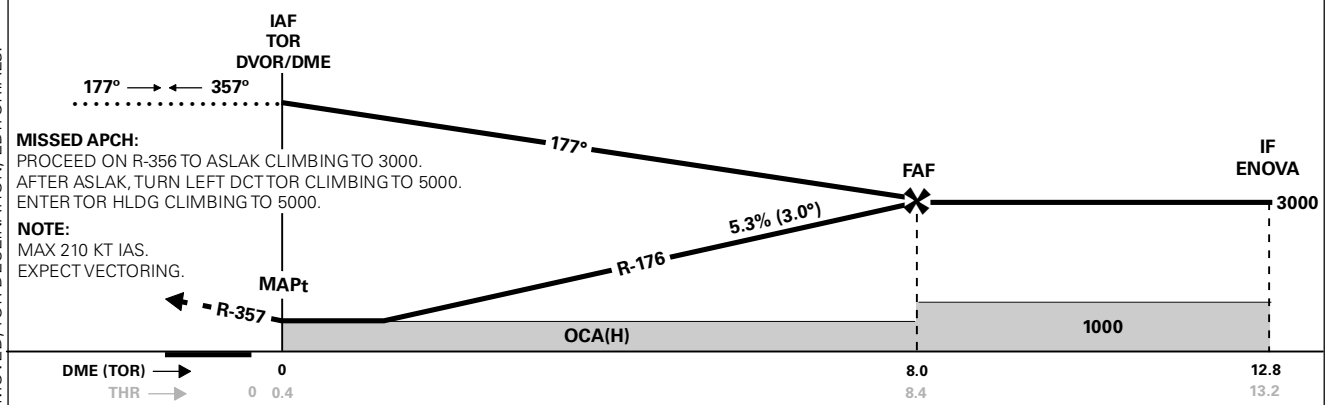
VOR RWY 36

TRANSITION ALTITUDE
7000

ATIS: 119.075	AD ELEV: 285
APP FARRIS: 134.050 124.350	THR ELEV: 254
TWR: 118.650	HGT RELATED TO THR RWY 36 ELEV, ALT AND HGT IN FT
GND: 126.175	CIRCLING HGT RELATED TO AD ELEV
BEARINGS ARE MAGNETIC - VAR 2.5 ° E (2015)	



DIST TO TOR	8	7	6	5	4	3	2	1
ALT (HGT)	3000 (2746)	2680 (2426)	2360 (2106)	2040 (1786)	1720 (1466)	1400 (1146)	1080 (826)	760 (506)



CAT OF ACFT	A	B	C	D	FINAL APCH	DIST FAF - MAPt: 8.0					
	700 (446)					SPEED	KT	70	90	120	150
STRAIGHT - IN	-	-	-	-	TIME	MIN:SEC	06:52	05:20	04:00	03:12	02:40
CIRCLING	840 (555)	880 (595)	980 (695)	1000 (715)	ROD	FT/MIN	375	485	645	805	965

NOTE:

Avinor

21 JUN 2018

CHANGES: VDF REMOVED, TOR DECLINATION, EDITORIALS.