

LANDING PATTERN - HELICOPTER

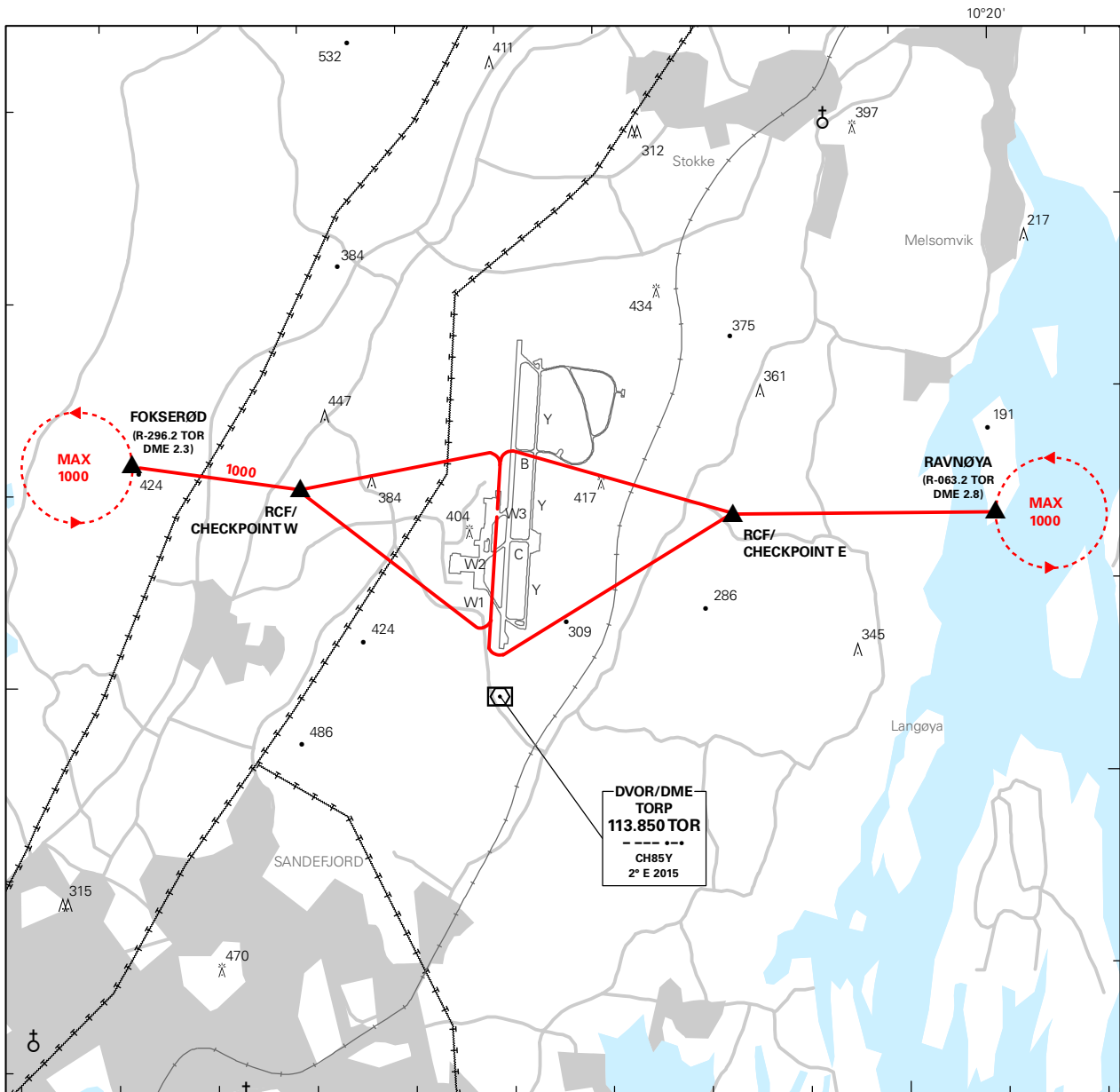
PLAN VIEW SCALE: 1:65 000

ATIS: 119.075	AD ELEV: 285	ELEV, ALT AND HGT IN FT
APP: 134.050 124.350	OBSTACLES LESS THAN 100 FT GND ARE NORMALLY NOT SHOWN	
TWR: 118.650	MAGNETIC VARIATION: 2.5 ° E (2015)	
GND: 126.175	TRANSITION ALTITUDE: 7000	

SANDEFJORD

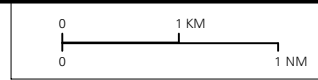
TORP

NORWAY



1. HELIKOPTEROPERASJONER INNENFOR 5 NM FRA TORP AD: MAX 1000 FT AMSL.
2. INN- OG UTFLYGING SKAL FOREGÅ VIA "CHECKPOINT W" ELLER "CHECKPOINT E" SOM VIST PÅ KARTET.
3. RUTENE SOM ER VIST PÅ KARTET SKAL FØLGES UTEN AVVIK INNTIL OMRÅDENE FOR FLYOPPSTILLING, TERMINALBYGNING OG BRANNSTASJON ER PASSERT.
4. RULLEBANEN MÅ IKKE KRYSSSES UTEN KLARERING FRA LUFTRAFIKKTJENESTEN.
5. LUFTRAFIKKTJENESTEN KAN TILDELE ANDRE RUTER ETTER ANMODNING.

ATS AIRSPACE CLASSIFICATION: REF ENR 1.4
LEGENDS: REF GEN 2.3



1. HELICOPTER OPERATIONS WITHIN 5 NM FROM TORP AD: MAX 1000 FT AMSL.
2. ARRIVAL AND DEPARTURES SHALL PROCEED VIA "CHECKPOINT W" OR "CHECKPOINT E" AS SHOWN ON THE MAP.
3. ROUTES AS SHOWN ON THE MAP MUST BE FOLLOWED STRICTLY UNTIL THE AIRCRAFT PARKING AREAS, TERMINAL BUILDING AND FIRE STATION HAVE BEEN PASSED.
4. RWY MUST NOT BE CROSSED WITHOUT ATC CLEARANCE.
5. ATC MAY ISSUE ALTERNATIVE ROUTES ON REQUEST.

CHANGES: COMPLETELY REVISED.