

**INSTRUMENT APPROACH CHART - ICAO PLAN VIEW SCALE: 1:350 000**

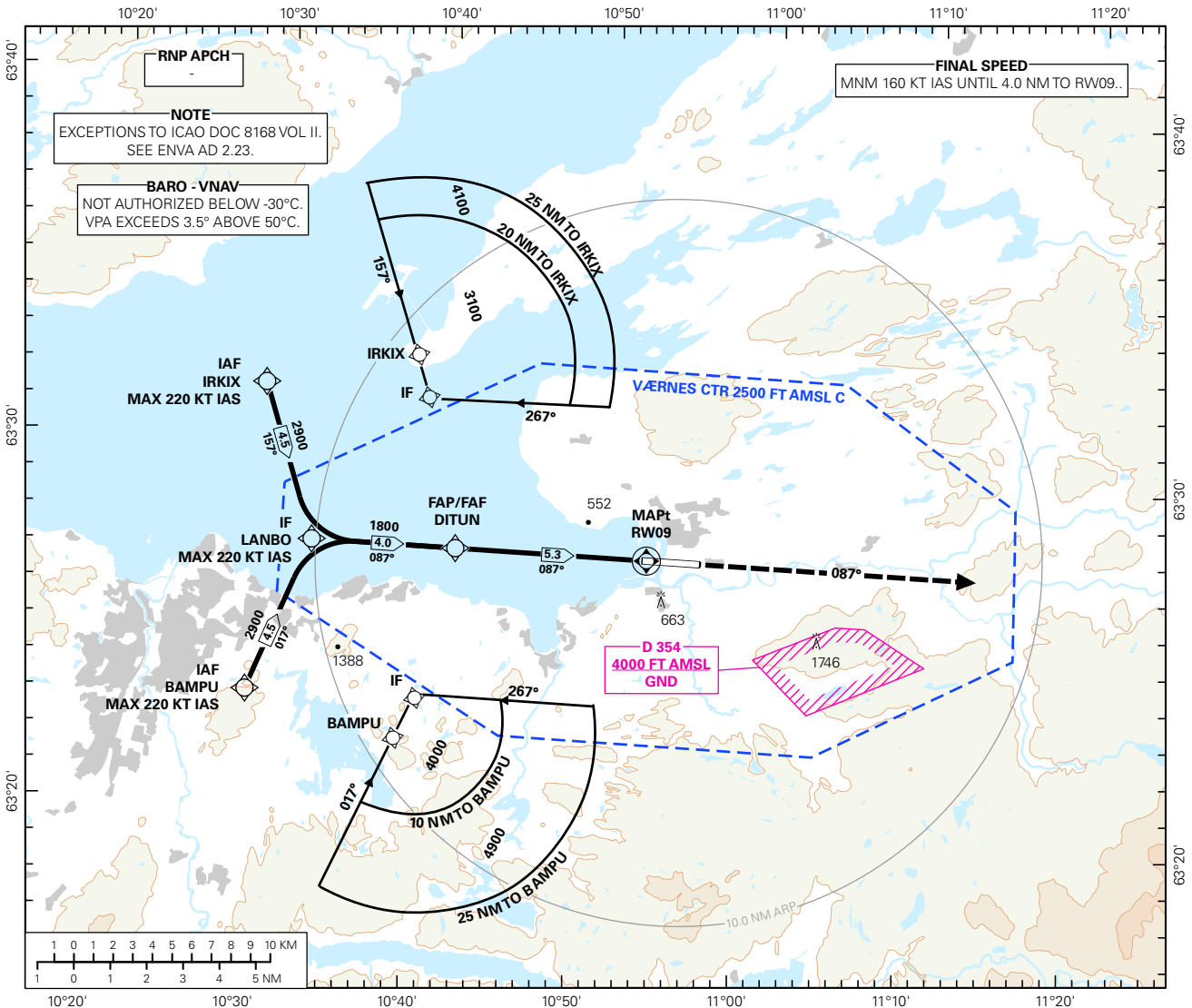
TRONDHEIM

**VÆRNES**

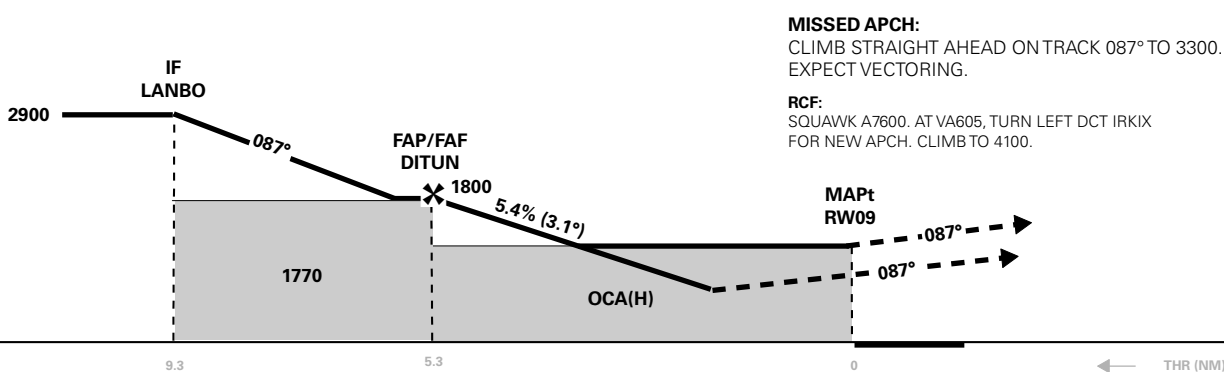
**RNAV<sub>(GNSS)</sub> RWY 09**

ATIS: 127.550		AERODROME ELEVATION: 56 FT	
APP: 118.600	119.150	THR ELEVATION: 17 FT	DIST IN NM
TWR: 119.400	133.750	HGT RELATED TO THR RWY 09	ELEV, ALT AND HGT IN FT
VDF: 118.600	119.400	CIRCLING HGT RELATED TO AD ELEV	
BEARINGS ARE MAGNETIC - VAR 2.9 ° E (2015)			

**TRANSITION ALTITUDE  
7000**



DIST TO RW09	9	8	7	6	5	4	3	2
ALT (HGT)	-	-	-	-	1720 (1703)	1390 (1373)	1060 (1043)	730 (713)



CAT OF ACFT	A	B	C	D	FINAL APPROACH	DIST FM FAF - MAPt: 5.3 NM						
						SPEED	KT	70	90	120	150	180
OCA(H) STRAIGHT - IN	LNAV/VNAV 2.5%*	830 (814)	840 (824)	860 (844)	880 (864)	TIME	MIN:SEC	04:32	03:31	02:39	02:07	01:46
	LNAV/VNAV 3.3%*	700 (684)				ROD	FT/MIN	385	495	660	825	985
CIRCLING	LNAV 2.5%*	1150 (1134)	1170 (1154)	1190 (1174)	1210 (1194)							
	LNAV 3.5%*	900 (884)	930 (914)	960 (944)	990 (974)							
	LNAV 4.5%*	720 (704)	740 (724)	770 (754)								

NOTE: CIRCLING S OF AD ONLY. \*MNM MISSED APCH CLIMB GRADIENT.

CHANGES: COMPLETE REVISION.

## RECOMMENDED RNAV PROCEDURE CODING

ENVA RNAV(GNSS) RWY 09										
Serial Number	Path Descriptor	Waypoint Identifier	Fly-over	Course °M(°T)	MAG VAR	DIST (NM)	Turn Dir	ALT (FT)	Speed (KT)	VPA/TCH
010	IF	IRKIX	-	-	-	-	-	A4000+	K220-	-
020	TF	LANBO	-	157 (160.2)	-	4.5	-	A2900+	K220-	-
010	IF	BAMPU	-	-	-	-	-	A4000+	K220-	-
020	TF	LANBO	-	017 (020.2)	-	4.5	-	A2900+	K220-	-
030	TF	DITUN	-	087 (089.9)	-	4.0	-	A1800+	-	-
040	TF	RW09	Y	087 (090.0)	-	5.3	-	-	-	-
050	CA	-	-	087 (090.0)	-	-	-	A3300	-	-

Note: Recommended RNAV procedure coding is based on ARINC 424-15 and is provided solely to indicate which procedure design protection areas were used in the Instrument Flight Procedure Design process.

Note: The use of SBAS/GNSS geometric altitude as a source of altitude for approaches to LNAV/VNAV minima is permitted only for aircraft specifically certified for this type of operation. See "EASA-CM-AS-002 Clarifications to AMC 20-27" for additional information.

Note: Published OCA(H) values are obstacle clearance values. Decision heights (DH) below 250 FT shall not be used due to APV approach operation Type A limitations.