

**INSTRUMENT APPROACH CHART - ICAO PLAN VIEW SCALE: 1:350 000**

TRONDHEIM

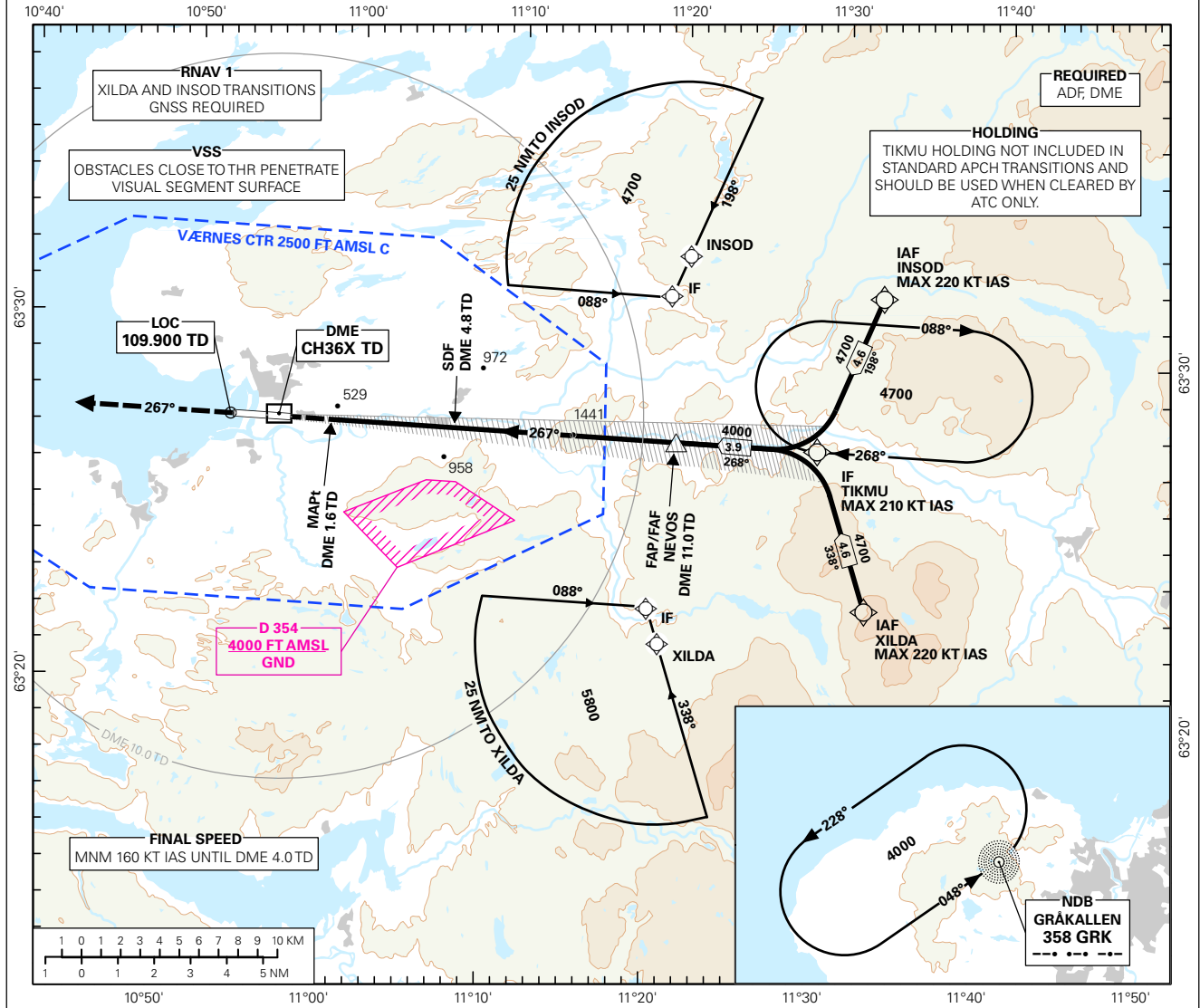
**VÆRNES**

**ILS or LOC RWY 27**

TRANSITION ALTITUDE

**7000**

<div style="border: 1px solid black; border-radius: 50%; width: 40px; height: 40px; display: flex; align-items: center; justify-content: center; margin: 0 auto;"> <span style="font-size: 24px; font-weight: bold;">5<sub>8</sub></span> </div> <p>MSA 25 NM ARP</p>	ATIS: 127550	AERODROME ELEVATION: 56 FT	
	APP: 118.600 119.150	THR ELEVATION: 56 FT	DIST IN NM
	TWR: 119.400 133.750	HGT RELATED TO THR RWY 27	ELEV, ALT AND HGT IN FT
	VDF: 118.600 119.400	CIRCLING HGT RELATED TO AD ELEV	
BEARINGS ARE MAGNETIC - VAR 2.9 ° E (2015)			

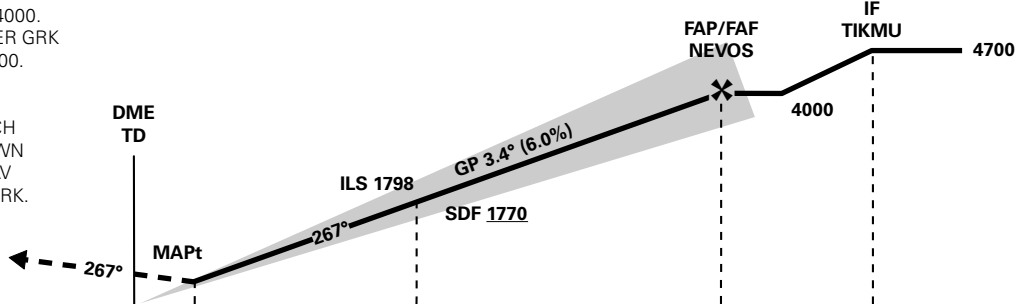


DIST TO TD	9	8	7	6	5	4	3	2
ALT (HGT)	3280 (3224)	2920 (2864)	2560 (2504)	2190 (2134)	1830 (1774)	1470 (1414)	1110 (1054)	740 (684)

ILS RDH 63 FT

**MISSED APCH:**  
CLIMB ON TRACK 267° TO 4000.  
TURN LEFT DCT GRK. ENTER GRK HOLDING CLIMBING TO 4000.

**NOTE:**  
IF GRK IS U/S, MISSED APCH PROCEDURE MAY BE FLOWN AS AN OVERLAY WITH RNAV HLDG POINT OVERHEAD GRK.



DME (TD) →	0	1.6	4.8	11.0	14.7
THR (NM) →	0	1.4	4.6	10.8	14.7

CAT OF ACFT	A	B	C	D	FINAL APPROACH	DIST FM FAF - MAPt: 9.4 NM					
	278 (222)	293 (237)	303 (247)	315 (259)		SPEED	KT	70	90	120	150
OCA(H) STRAIGHT - IN	700 (644)				TIME	MIN:SEC	08:04	06:16	04:42	03:46	03:08
CIRCLING	1240 (1184)	1430 (1374)	2140 (2084)		ROD	FT/MIN	425	545	725	910	1090

NOTE: CIRCLING S OF AD ONLY.

CHANGES: COMPLETE REVISION.