

**INSTRUMENT APPROACH CHART - ICAO PLAN VIEW SCALE: 1:350 000**

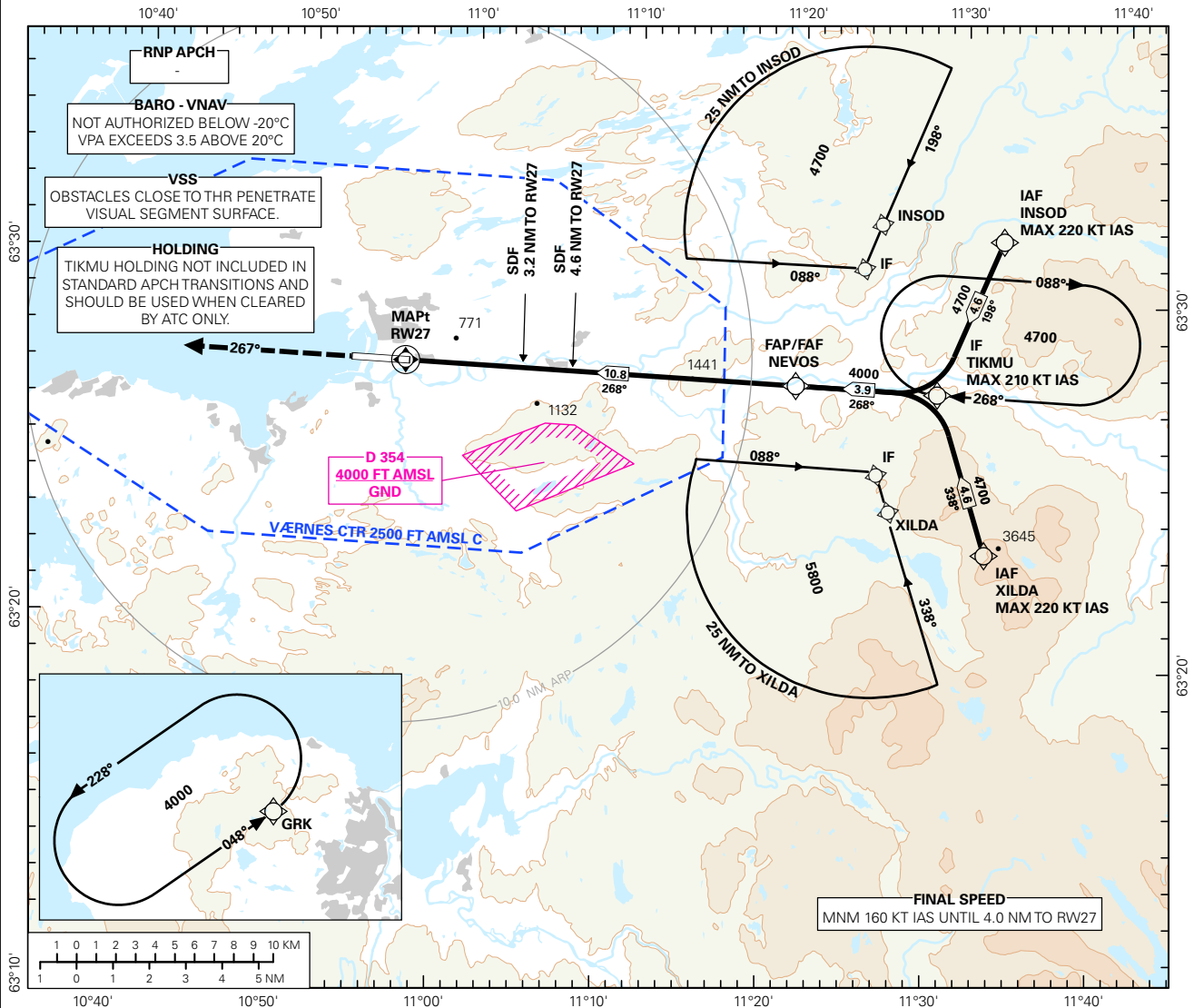
TRONDHEIM

**VÆRNES**

**RNAV<sub>(GNSS)</sub> RWY 27**

ATIS: 127.550	AERODROME ELEVATION: 56 FT		
APP: 118.600 119.150	THR ELEVATION: 56 FT	DIST IN NM	
TWR: 119.400 133.750	HGT RELATED TO THR RWY 27	ELEV, ALT AND HGT IN FT	
VDF: 118.600 119.400	CIRCLING HGT RELATED TO AD ELEV		
BEARINGS ARE MAGNETIC - VAR 2.9 ° E (2015)			

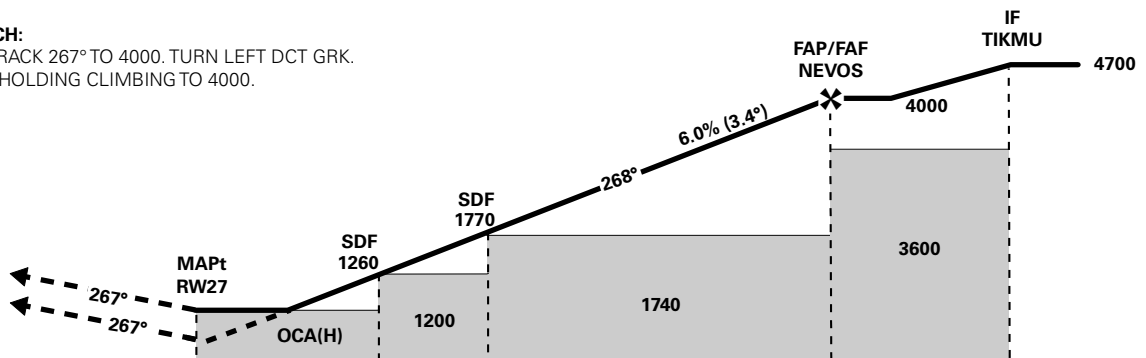
TRANSITION ALTITUDE  
**7000**



DIST TO RWY27	10	9	8	7	6	5	4	3
ALT (HGT)	3730 (3674)	3370 (3314)	3010 (2954)	2650 (2594)	2280 (2224)	1920 (1864)	1560 (1504)	1200 (1144)

**MISSED APCH:**

CLIMB ON TRACK 267° TO 4000. TURN LEFT DCT GRK. ENTER GRK HOLDING CLIMBING TO 4000.



THR (NM)	→				0	3.2	4.6	10.8	14.7			
CAT OF ACFT	A	B	C	D	FINAL APPROACH	DIST FM FAF - MAPt: 10.8 NM						
OCA(H)	RNAV/VNAV	900 (844)	900 (844)	910 (854)	920 (864)	SPEED	KT	70	90	120	150	180
STRAIGHT - IN	LNAV	960 (904)				TIME	MIN:SEC	09:14	07:11	05:23	04:19	03:36
CIRCLING		1240 (1184)	1430 (1374)	2140 (2084)		ROD	FT/MIN	425	545	725	905	1085

NOTE: CIRCLING S OF AD ONLY.

CHANGES: COMPLETE REVISION.

## RECOMMENDED RNAV PROCEDURE CODING

ENVA RNAV(GNSS) RWY 27										
Serial Number	Path Descriptor	Waypoint Identifier	Fly-over	Course °M(°T)	MAG VAR	DIST (NM)	Turn Dir	ALT (FT)	Speed (KT)	VPA/TCH
010	IF	INSOD	-	-	-	-	-	A6000+	K220-	-
020	TF	TIKMU	-	198(200.8)	-	4.6	-	A4700+	K210-	-
010	IF	XILDA	-	-	-	-	-	A6000+	K220-	-
020	TF	TIKMU	-	338(340.8)	-	4.6	-	A4700+	K210-	-
030	TF	NEVOS	-	268(270.7)	-	3.9	-	A4000+	-	-
040	TF	RW27	Y	268(270.6)	-	10.8	-	-	-	-
050	CA	-	-	267(270.3)	-	-	-	A4000	-	-
060	DF	GRK	-	-	-	-	L	A4000	-	-
070	HM	GRK	-	048(051.0)		1 MIN	L	A4000	-	-

Note: Recommended RNAV procedure coding is based on ARINC 424-15 and is provided solely to indicate which procedure design protection areas were used in the Instrument Flight Procedure Design process.

Note: The use of SBAS/GNSS geometric altitude as a source of altitude for approaches to LNAV/VNAV minima is permitted only for aircraft specifically certified for this type of operation. See "EASA-CM-AS-002 Clarifications to AMC 20-27" for additional information.

Note: Published OCA(H) values are obstacle clearance values. Decision heights (DH) below 250 FT shall not be used due to APV approach operation Type A limitations.