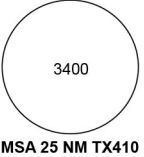
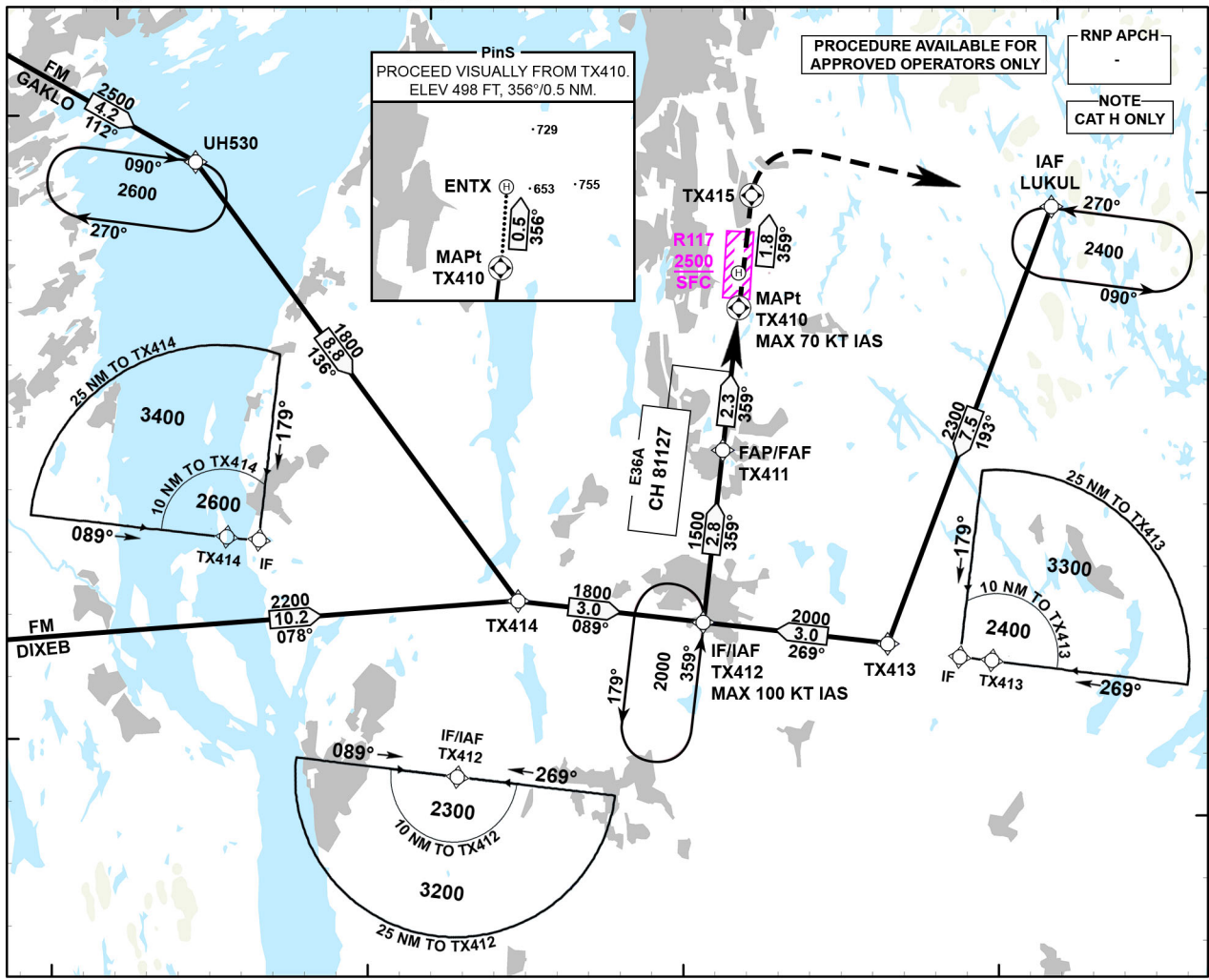
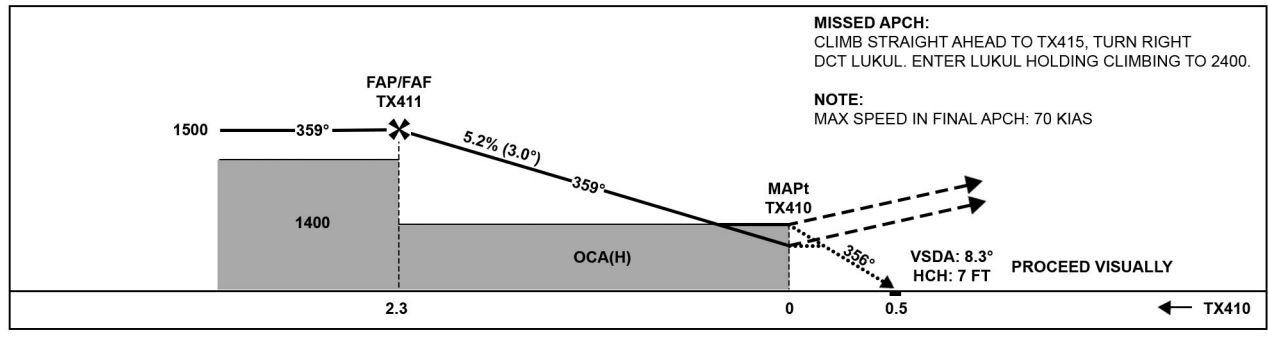


INSTRUMENT APPROACH CHART - ICAO

 <p>MSA 25 NM TX410</p>	OSLO ATIS: 126.125	Alt. and elev. in FT, dist. in NM and bearings MAG		ENTX/ TARALDRUD NORWAY RNP 359
	OSLO APP: 118.475 120.450	HGT related to ENTX HRP elevation of 498 FT		
	GARDERMOEN TWR: 120.100 (123.325)			
	OSLO TRAFFIC: 122.000	1 : 200 000	VAR: 4° E (2020)	



DIST TO TX410	3.5	3.0	2.5	2.0	1.5	1.0	0.5
ALT (HGT)	-	-	-	1400 (902)	1240 (742)	1080 (582)	-



CAT OF ACFT		H	VISIBILITY	ALS OUT
OCA (H) STRAIGHT-IN	LNAV	960 (462)	RVR 800 M PART NCC.OP.100 AMC 7	
	LPV	809 (311)		
CIRCLING				
NOTE: -				

CHANGES: AIRSPACE R117 ADDED.

RECOMMENDED CODING

ENTX RNP 359													
SN	PD	WI	Fly-over	°M (°T)	MAG VAR	DIST (NM)	REC NAV AID	TD	ALT (FT)	Speed (KT)	VPA(°)/TCH(FT)	ARC CENTRE RADIUS (NM)	RNP (NM)
010	IF	GAKLO	-	-	-	-	-	-	-	-	-	-	1.0
020	TF	UH530	-	-	-4.0	4.2	-	-	A2500+	-	-	-	1.0
030	TF	TX414	-	-	-4.0	8.8	-	-	A1800+	-	-	-	1.0
040	TF	TX412	-	-	-4.0	3.0	-	-	A1800+	K100-	-	-	1.0
010	IF	DIXEB	-	-	-	-	-	-	-	-	-	-	1.0
020	TF	TX414	-	-	-4.0	10.2	-	-	A2200+	-	-	-	1.0
030	TF	TX412	-	-	-4.0	3.0	-	-	A1800+	K100-	-	-	1.0
010	IF	LUKUL	-	-	-	-	-	-	-	-	-	-	1.0
020	TF	TX413	-	-	-4.0	7.5	-	-	A2300+	-	-	-	1.0
030	TF	TX412	-	-	-4.0	3.0	-	-	A2000+	K100-	-	-	1.0
010	IF	TX412	-	-	-	-	-	-	-	-	-	-	1.0
020	TF	TX411	-	-	-4.0	2.8	-	-	A1500+	-	-	-	1.0
030	TF	TX410	Y	-	-4.0	2.3	-	-	-	K070-	-3.0/50	-	0.3
040	TF	TX415	Y	-	-4.0	1.8	-	-	-	K070-	-	-	1.0
050	DF	LUKUL	-	-	-4.0	-	-	R	-	-	-	-	1.0
060	HM	LUKUL	-	270 (274.0)	-4.0	1 MIN	-	L	A2400+	K100-	-	-	1.0
010	HM	TX412	-	359 (002.9)	-4.0	1 MIN	-	L	A2000+	K100-	-	-	1.0
010	HM	UH530	-	090 (094.0)	-4.0	1 MIN	-	R	A2600+	K100-	-	-	1.0

Note: Recommended coding is based on ARINC 424 and is provided solely to indicate which procedure design protection areas were used in the Instrument Flight Procedure Design process.

Note: TX412 and UH530 holdings not included in standard APCH transitions.

FAS DATA BLOCK

Operation type	0	LTP/FTP ellipsoidal height	226.7
SBAS Provider	1	FPAP latitude	594934.4725N
Airport Identifier	ENTX	FPAP longitude	0105037.6630E
Runway	36	Threshold crossing height	50
Approach performance designator	0	TCH units	FT
Route Indicator	-	Glide path angle	3.0
Reference path data selector	0	Course width at threshold	105
Reference path Identifier	E36A	Length offset	0
LTP/FTP latitude	594807.4990N	Horizontal alert limit (HAL)	40
LTP/FTP longitude	0105028.9505E	Vertical alert limit (VAL)	35
PRECISION APPROACH PATH CRC REMAINDER		55755831	